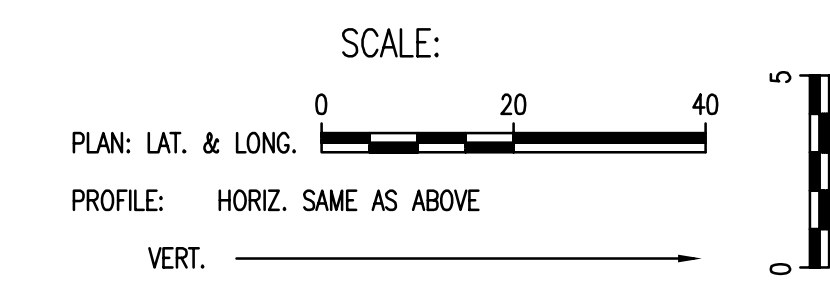
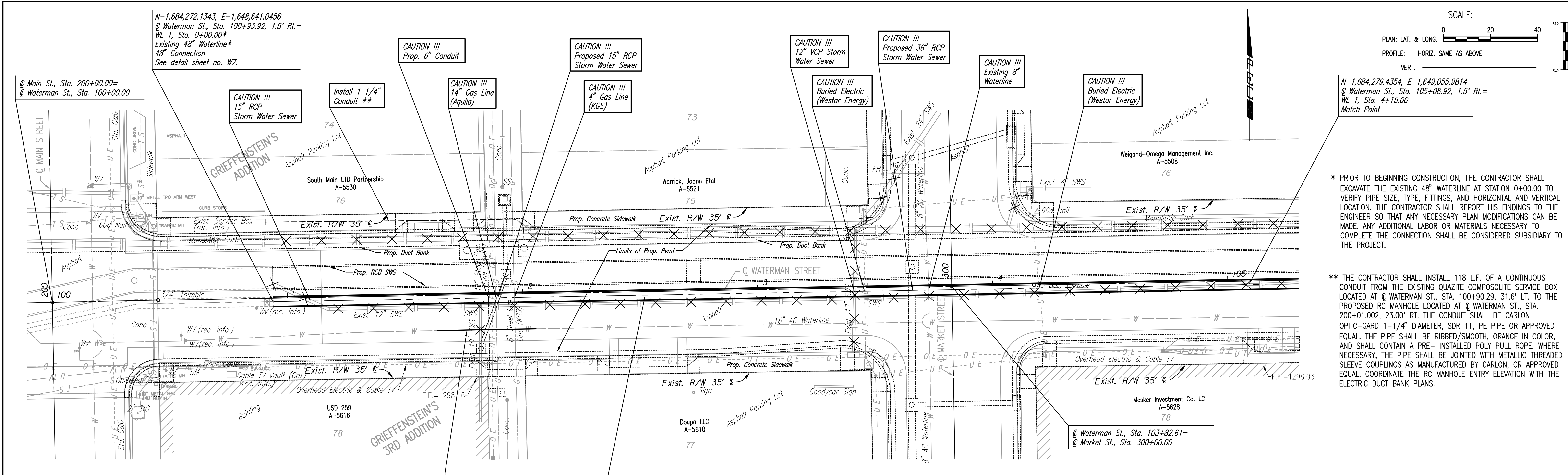


DATE	
BY	
CHECKED	
CHECKED	
PLAN	

DATE	
BY	
CHECKED	
CHECKED	
PROFILE	

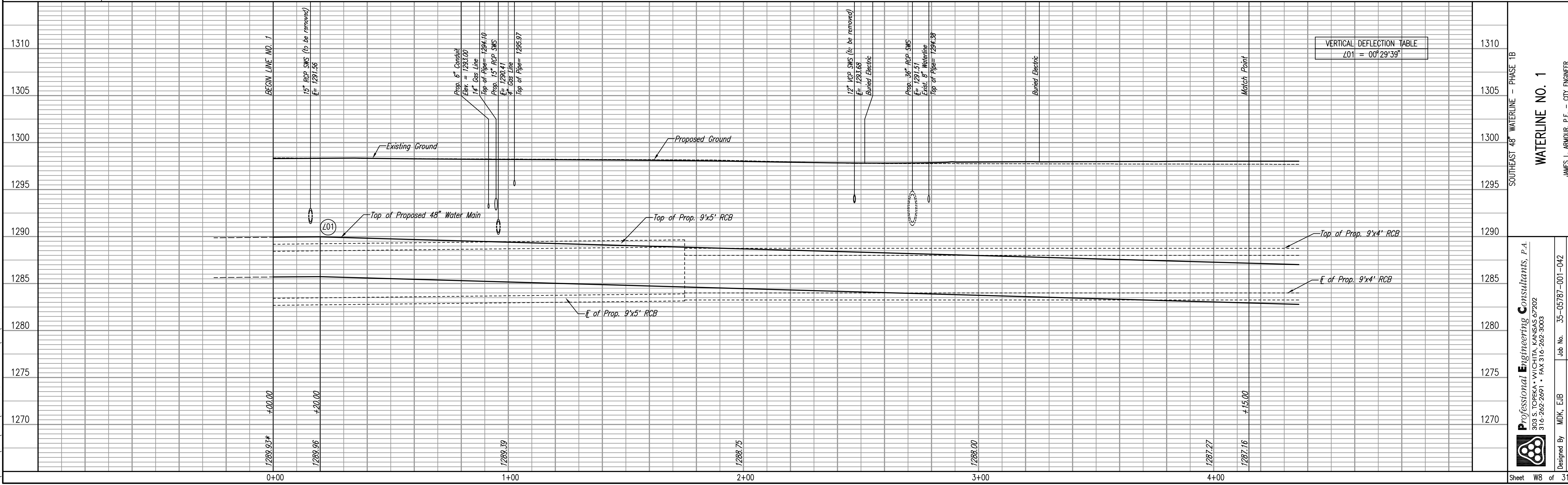
S:\02-27-2007 9:50:50 AM by BEJ  
 Plot Scale 1:20 02-27-2007 11:17:22 AM by BEJ  
 J:\SENTOU\2006\0623\2007-02-28 Final to COM\DWG\WB-01.dwg



\* PRIOR TO BEGINNING CONSTRUCTION, THE CONTRACTOR SHALL EXCAVATE THE EXISTING 48" WATERLINE AT STATION 0+00.00 TO VERIFY PIPE SIZE, TYPE, FITTINGS, AND HORIZONTAL AND VERTICAL LOCATION. THE CONTRACTOR SHALL REPORT HIS FINDINGS TO THE ENGINEER SO THAT ANY NECESSARY PLAN MODIFICATIONS CAN BE MADE. ANY ADDITIONAL LABOR OR MATERIALS NECESSARY TO COMPLETE THE CONNECTION SHALL BE CONSIDERED SUBSIDIARY TO THE PROJECT.

\*\* THE CONTRACTOR SHALL INSTALL 118 L.F. OF A CONTINUOUS CONDUIT FROM THE EXISTING QUAZITE COMPOSITE SERVICE BOX LOCATED AT WATERMAN ST., STA. 100+90.29, 31.6' LT. TO THE PROPOSED RC MANHOLE LOCATED AT WATERMAN ST., STA. 200+01.002, 23.00' RT. THE CONDUIT SHALL BE CARLON OPTIC-GARD 1-1/4" DIAMETER, SDR 11, PE PIPE OR APPROVED EQUAL. THE PIPE SHALL BE RIBBED/SMOOTH, ORANGE IN COLOR, AND SHALL CONTAIN A PRE-INSTALLED POLY PULL ROPE. WHERE NECESSARY, THE PIPE SHALL BE JOINTED WITH METALLIC THREADED SLEEVE COUPLINGS AS MANUFACTURED BY CARLON, OR APPROVED EQUAL. COORDINATE THE RC MANHOLE ENTRY ELEVATION WITH THE ELECTRIC DUCT BANK PLANS.

Unless noted otherwise, elevations shown are top of pipe. WATERLINE NO. 1. X = Denotes Pipe to be removed. (See Paving and Storm Sewer Plans also.)



VERTICAL DEFLECTION TABLE	
L01 = 00°29'39"	