

DATE	
BY	
CHECKED	
PLAN	

DATE	
BY	
CHECKED	
PROFILE	

Saved: 02-27-2007 9:53:14 AM by BEJ  
 Plot Scale: 1:20 02-27-2007 11:16:26 AM by BEJ  
 J:\SENTOU\2006\06237\2007-02-28 Final to COM\DWG\W10-1.dwg

N-1,684,287.1730, E-1,649,470.9088  
 @ Waterman St., Sta. 109+23.98, 4.5' Rt.=  
 WL 1, Sta. 8+30.00  
 Match Point

CAUTION !!!  
 Existing 20"  
 Sanitary Sewer

Construct 34 L.F. Reinforced  
 Concrete Encasement on Existing  
 20" Sanitary Sewer pipe. (12' Rt.  
 and 22' Lt. of @ of proposed 48"  
 Waterline.)

CAUTION !!!  
 6" Gas Line  
 (KGS)

CAUTION !!!  
 Proposed 6"  
 Conduit

N-1,684,262.0860, E-1,649,660.0898  
 @ Waterman St., Sta. 111+12.66, 33.09' Rt.=  
 Existing 8" Waterline \*  
 Cut-in 1- 8" Line Valve Assembly  
 (MJ Gate Valve)  
 Top Valve Box El.= 1296.4

CAUTION !!!  
 8" Waterline  
 (City of Wichita)

N-1,684,336.9700, E-1,649,659.5141  
 @ Waterman St., Sta. 111+13.49, 41.79' Lt.=  
 Existing 8" Waterline \*  
 Cut-in 1- 8" Line Valve Assembly  
 (MJ Gate Valve)  
 Top Valve Box El.= 1296.4

CAUTION !!!  
 Proposed 36" RCP  
 Storm Water Sewer

CAUTION !!!  
 Existing Telephone Manhole and Duct Bank  
 (AT&T) to remain.  
 AT&T to restrain Manhole and Duct Bank in  
 place thru construction. Coordinate with AT&T,  
 Mr. Jason Edwards at 268-2008. (Provide at  
 least 2 weeks notice)

CAUTION !!!  
 24" RCP  
 Storm Water Sewer

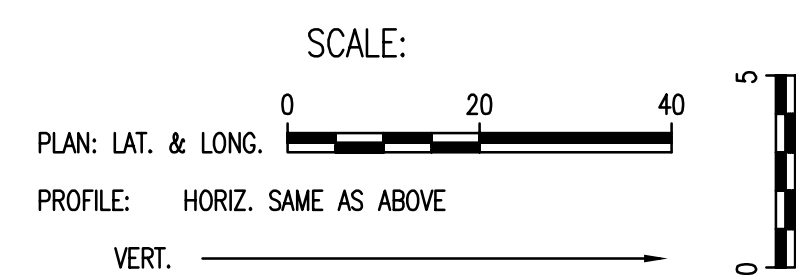
CAUTION !!!  
 Proposed 24" RCP  
 Storm Water Sewer

CAUTION !!!  
 Buried Electric  
 (Westar Energy)

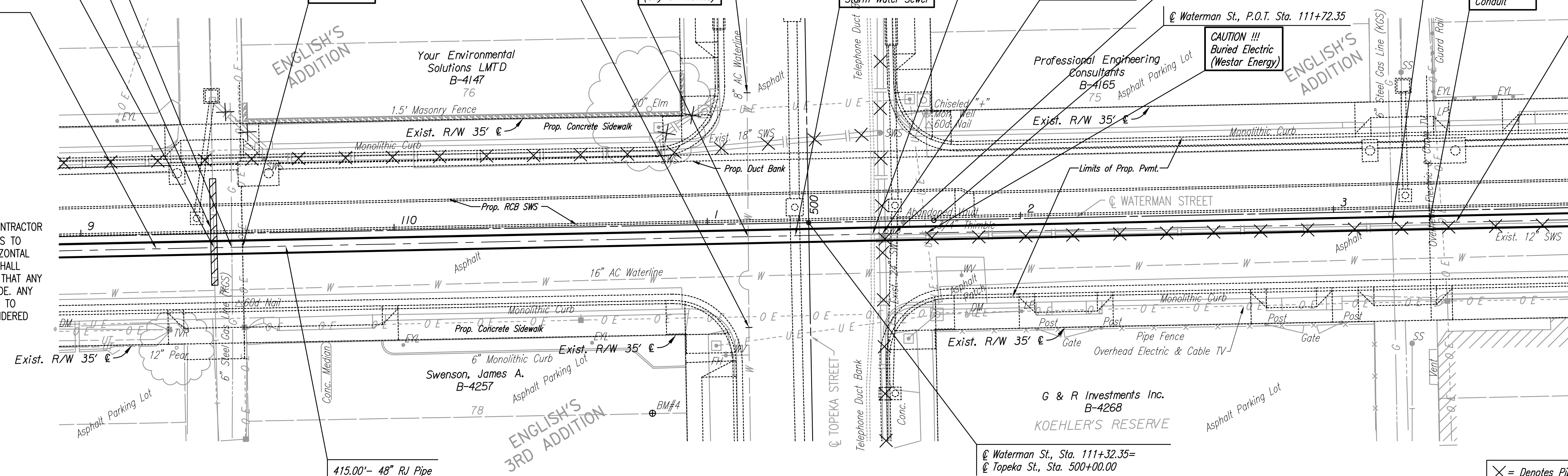
CAUTION !!!  
 6" Gas Line  
 (KGS)

CAUTION !!!  
 Proposed 6"  
 Conduit

N-1,684,295.7003, E-1,649,885.8212  
 @ Waterman St., Sta. 113+38.98, 3.9' Rt.=  
 WL 1, Sta. 12+45.00  
 Match Point



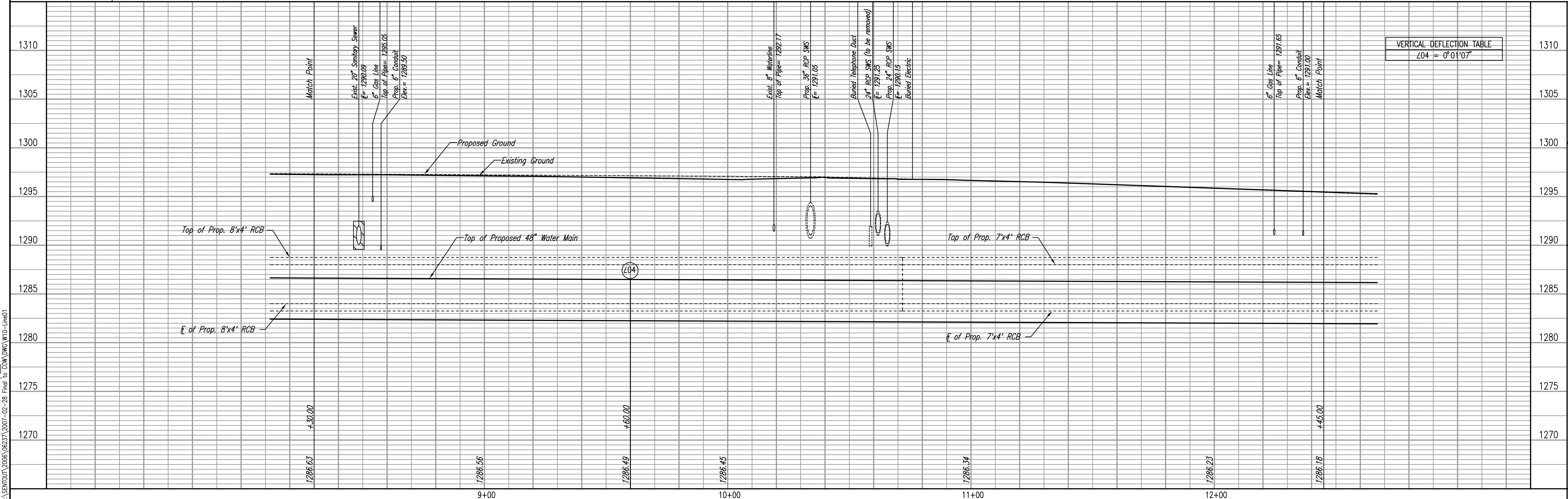
\* PRIOR TO BEGINNING CONSTRUCTION, THE CONTRACTOR SHALL EXCAVATE THE EXISTING 8" WATERLINES TO VERIFY PIPE SIZE, TYPE, FITTINGS, AND HORIZONTAL AND VERTICAL LOCATION. THE CONTRACTOR SHALL REPORT HIS FINDINGS TO THE ENGINEER SO THAT ANY NECESSARY PLAN MODIFICATIONS CAN BE MADE. ANY ADDITIONAL LABOR OR MATERIALS NECESSARY TO COMPLETE THE CONNECTION SHALL BE CONSIDERED SUBSIDIARY TO THE PROJECT.



Unless noted otherwise, elevations shown are top of pipe

WATERLINE NO. 1

X = Denotes Pipe to be removed. (See Paving and Storm Sewer Plans also.)



VERTICAL DEFLECTION TABLE

Z04 = 0'01'07"
----------------

SOUTHEAST 48" WATERLINE - PHASE 1B

WATERLINE NO. 1

Professional Engineering Consultants, P.A.  
 803 S. TOPEKA AVE., SUITE 200, WICHITA, KANSAS 67202  
 316-262-2691 • FAX 316-262-3008

Designed By MDK, EJB  
 Drawn By CSL

Job No. 35-05787-001-042  
 Date March 2006

JAMES L. ARMOUR, P.E. - CITY ENGINEER  
 CITY OF WICHITA PROJECT NO. 448-90182

Sheet W10 of 31