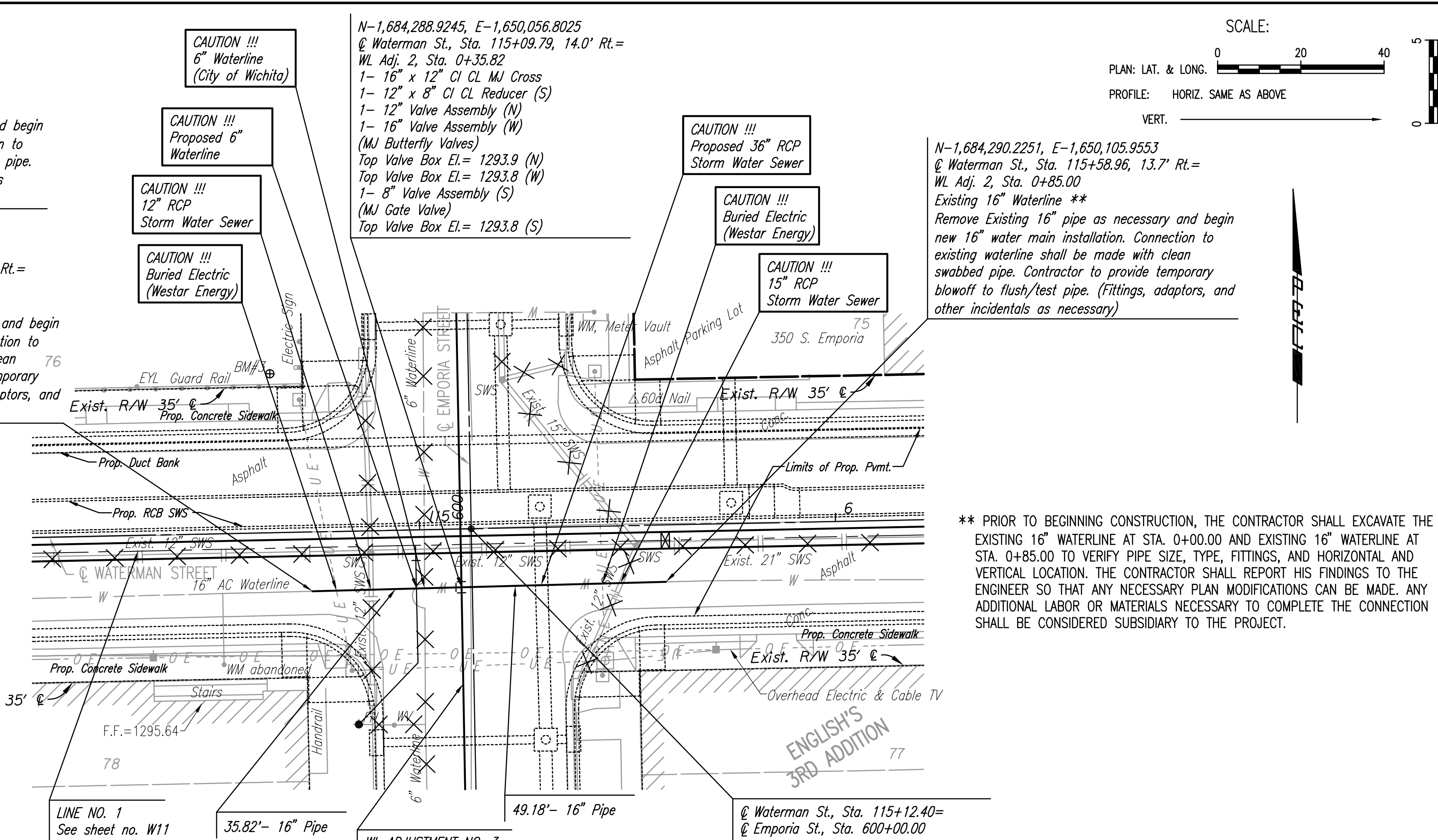
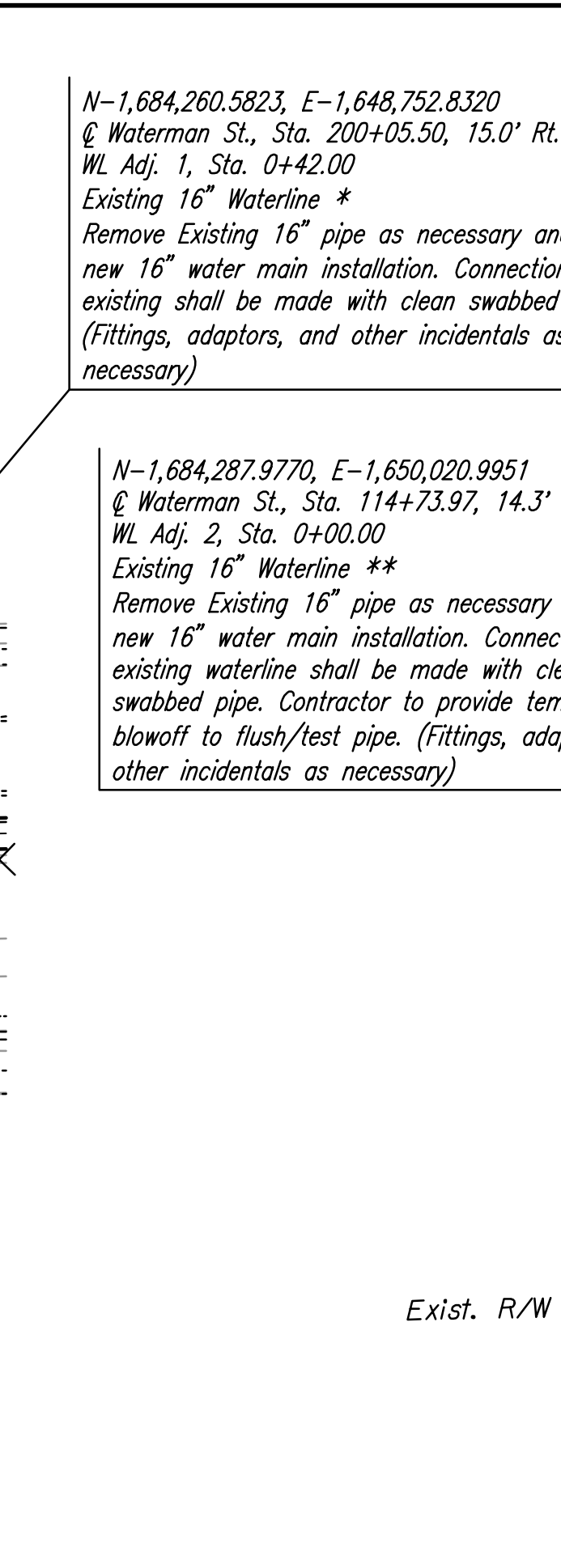
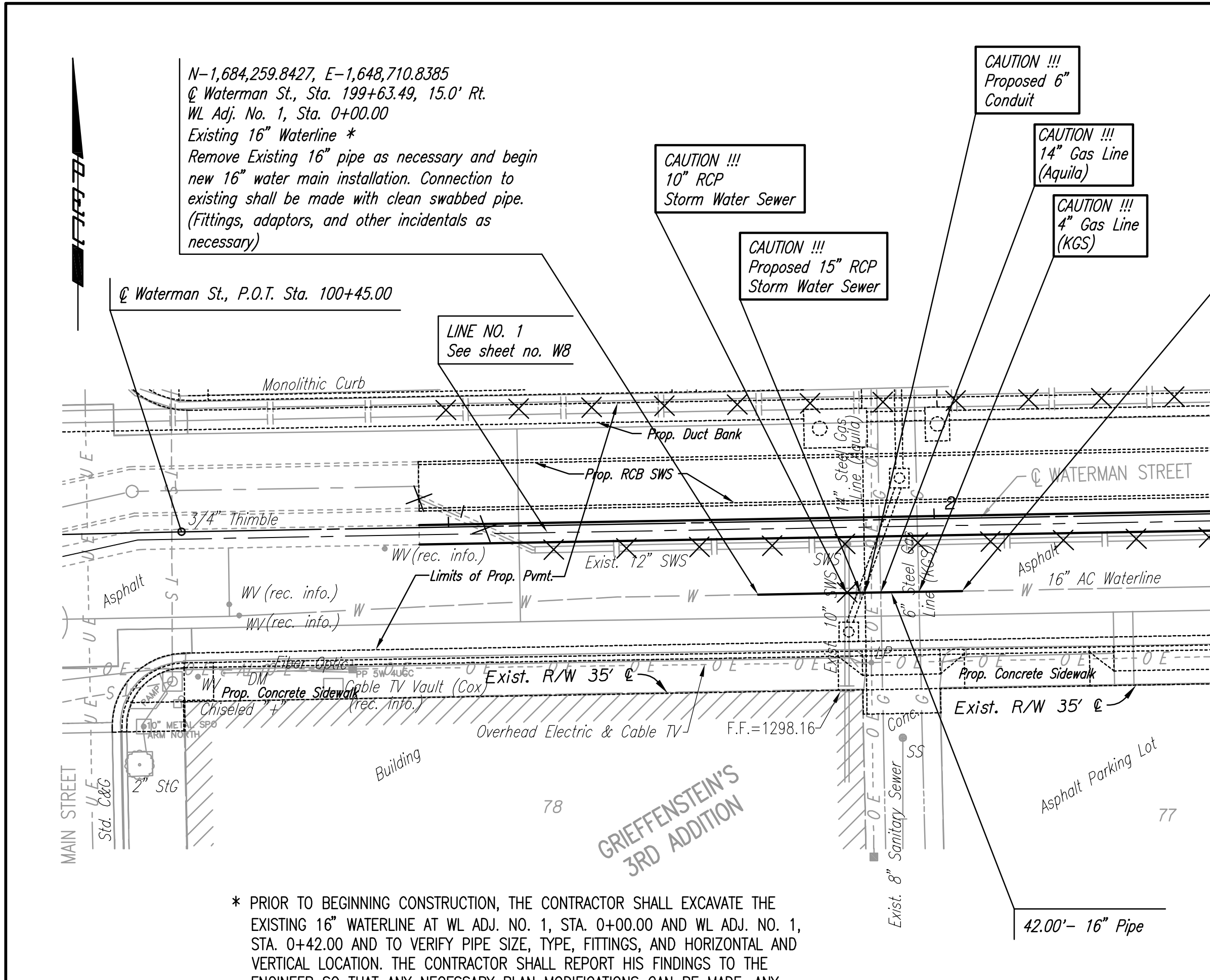


DATE	
BY	
CHECKED	
PLAN	

DATE	
BY	
CHECKED	
PROFILE	

Saved: 02-27-2007 10:09:54 AM by CSI
 Plot Scale: 1:20 02-27-2007 10:59:53 AM by BEJ
 J:\SENTOU\2006\06237\2007-02-28 Final to COM\DWG\W17-WaterlineAdjust01.mxd



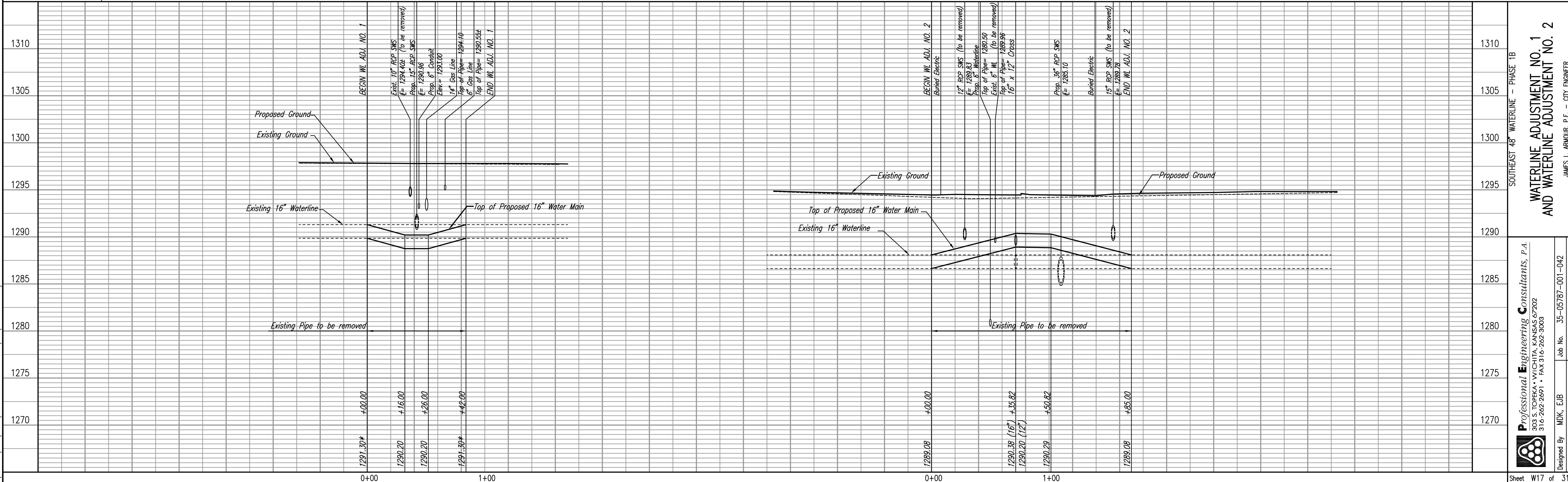
* PRIOR TO BEGINNING CONSTRUCTION, THE CONTRACTOR SHALL EXCAVATE THE EXISTING 16" WATERLINE AT WL ADJ. NO. 1, STA. 0+00.00 AND WL ADJ. NO. 1, STA. 0+42.00 AND TO VERIFY PIPE SIZE, TYPE, FITTINGS, AND HORIZONTAL AND VERTICAL LOCATION. THE CONTRACTOR SHALL REPORT HIS FINDINGS TO THE ENGINEER SO THAT ANY NECESSARY PLAN MODIFICATIONS CAN BE MADE. ANY ADDITIONAL LABOR OR MATERIALS NECESSARY TO COMPLETE THE CONNECTION SHALL BE CONSIDERED SUBSIDIARY TO THE PROJECT.

** PRIOR TO BEGINNING CONSTRUCTION, THE CONTRACTOR SHALL EXCAVATE THE EXISTING 16" WATERLINE AT STA. 0+00.00 AND EXISTING 16" WATERLINE AT STA. 0+85.00 TO VERIFY PIPE SIZE, TYPE, FITTINGS, AND HORIZONTAL AND VERTICAL LOCATION. THE CONTRACTOR SHALL REPORT HIS FINDINGS TO THE ENGINEER SO THAT ANY NECESSARY PLAN MODIFICATIONS CAN BE MADE. ANY ADDITIONAL LABOR OR MATERIALS NECESSARY TO COMPLETE THE CONNECTION SHALL BE CONSIDERED SUBSIDIARY TO THE PROJECT.

X = Denotes Pipe to be removed. (See Paving and Storm Sewer Plans also.)

WATERLINE ADJUSTMENT NO. 1

WATERLINE ADJUSTMENT NO. 2



SOUTHEAST 48" WATERLINE - PHASE 1B
 WATERLINE ADJUSTMENT NO. 1
 AND WATERLINE ADJUSTMENT NO. 2
 JAMES L. ARMOUR, P.E. - CITY ENGINEER
 CITY OF WICHITA PROJECT NO. 448-90182

Professional Engineering Consultants, P.A.
 803 S. TOPICKA AVENUE, KANSAS CITY, MO 64108
 316.262.2691 • FAX 316.262.3008
 Designed By MDK, EJB
 Drawn By CSL
 Job No. 35-05787-001-042
 Date March 2006