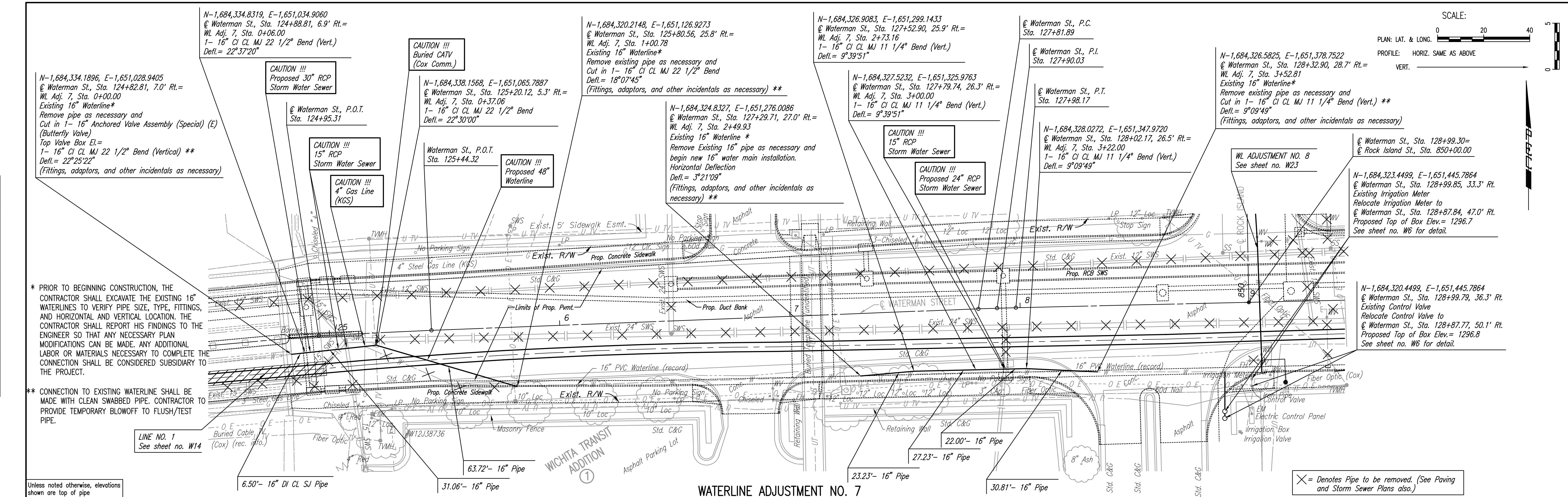


DATE	
BY	
CHECKED	
PLAN	

DATE	
BY	
CHECKED	
PROFILE	



* PRIOR TO BEGINNING CONSTRUCTION, THE CONTRACTOR SHALL EXCAVATE THE EXISTING 16" WATERLINES TO VERIFY PIPE SIZE, TYPE, FITTINGS, AND HORIZONTAL AND VERTICAL LOCATION. THE CONTRACTOR SHALL REPORT HIS FINDINGS TO THE ENGINEER SO THAT ANY NECESSARY PLAN MODIFICATIONS CAN BE MADE. ANY ADDITIONAL LABOR OR MATERIALS NECESSARY TO COMPLETE THE CONNECTION SHALL BE CONSIDERED SUBSIDIARY TO THE PROJECT.

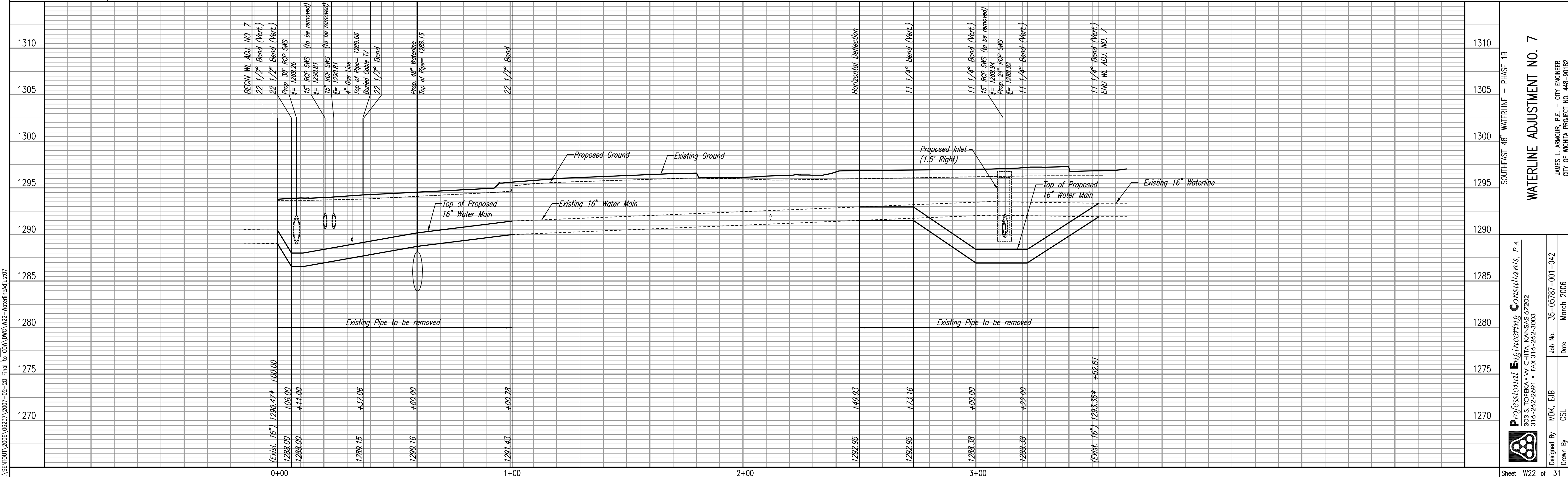
** CONNECTION TO EXISTING WATERLINE SHALL BE MADE WITH CLEAN SWABBED PIPE. CONTRACTOR TO PROVIDE TEMPORARY BLOWOFF TO FLUSH/TEST PIPE.

LINE NO. 1
See sheet no. W14

Unless noted otherwise, elevations shown are top of pipe

WATERLINE ADJUSTMENT NO. 7

X = Denotes Pipe to be removed. (See Paving and Storm Sewer Plans also.)



Save 02-27-2007 10:16:42 AM by CSI
Plot Scale 1:20 02-27-2007 10:57:51 AM by BEJ
J:\SENTOU\2006\0622\2007-02-28 Final to COM\DWG\W22-WaterlineAdjust07

SOUTHEAST 48" WATERLINE - PHASE 1B
WATERLINE ADJUSTMENT NO. 7
JAMES L. ARMOUR, P.E. - CITY ENGINEER
CITY OF WICHITA PROJECT NO. 448-90182

Professional Engineering Consultants, P.A.
303 S. TOPICKA WICHITA, KANSAS 67202
316 262 2691 • FAX 316 262 3003
Designed By MDK, EJB
Drawn By CSL
Job No. 35-05787-001-042
Date March 2006
Sheet W22 of 31

