

STATE OF KANSAS  
DEPARTMENT OF TRANSPORTATION



CONSTRUCTION PLANS FOR PROPOSED  
**29th STREET NORTH  
MAIZE ROAD to TYLER ROAD**  
FEDERAL AID URBAN SYSTEM PROJECT

FOR  
THE CITY OF WICHITA,  
SEDGWICK COUNTY, KANSAS

FHWA REGION NO.	STATE	PROJECT NO.	FISCAL YEAR	SHEET NO.	TOTAL SHEET
7	KANSAS	N 87-0294-01	2004	1	129

STP-N 029(401)

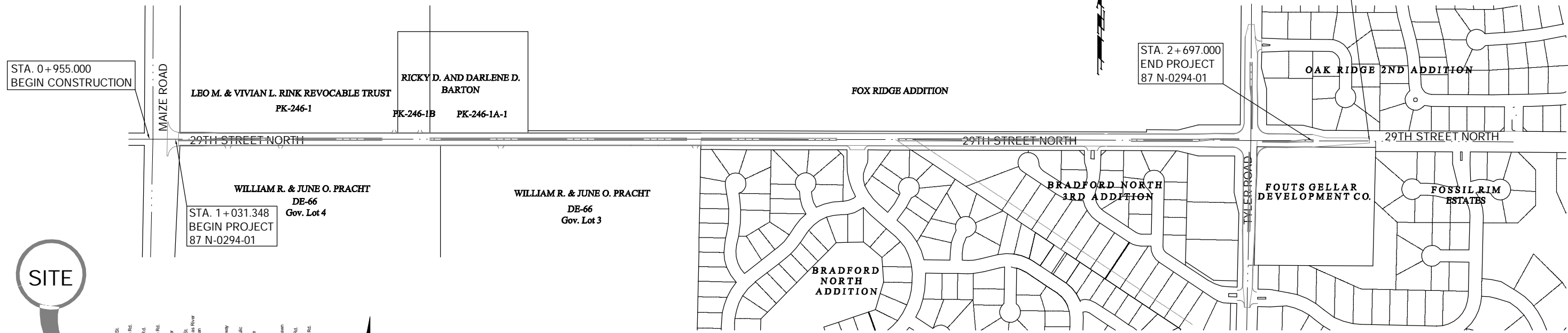
GRADING  
STORM SEWER  
SURFACING  
PAVEMENT MARKING

Note:  
All Dimensions shown without the SI suffix  
are in meters. All elevations shown are in  
meters

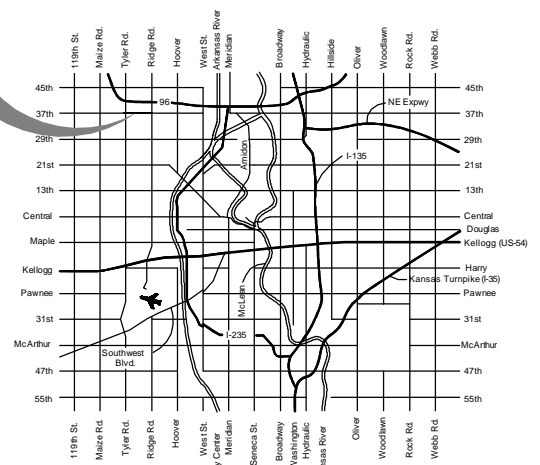
Traffic Note:  
Traffic shall be carried through construction.  
See sheet no. 75a - 81 for Construction Sequences.

INDEX

- 1 Title Sheet
- 2 Key Sheet
- 3 General Notes
- 4-6 Typical Sections
- 7-8 Pavement Details
- 9-10 Valley Gutter Details
- 11 Standard Drive Details
- 12-24 29th Street North Paving Plans
- 25-27 Tyler Road Paving Plans
- 28 Intersection Joint Plan
- 29 Intersection Grading Plan
- 30-51 Storm Water Sewer Plan/Profiles
- 52-64 Storm Water Sewer Details
- 65 29th Street & Maize Road Signalization Plan
- 66 29th Street & Maize Road Wiring Plan
- 67 29th Street & Tyler Road Signalization Plan
- 68 29th Street & Tyler Road Wiring Plan
- 69-72 Marking & Signing Plan
- 73-75 Traffic & Street Sign Details
- 75a-81 Construction Sequencing
- 82-83 Traffic Control Details
- 84 Drainage Plan
- 85-86 Recapitulation of Quantities
- 87-90 Erosion Control Details
- 91-121 29th Street Cross Sections
- 122-129 Tyler Road Cross Sections



SITE



VICINITY MAP

City Project No. 472-83863  
O.C.A. No. 706868  
Oct. 2004

DESIGN DATA

AADT (2000)	1,000
AADT (2030)	14,000
DHV	10%
T	3%
V	65 km/hr
C of A	N/A
Clear Zone	1.8m

Gross Length of Project	1,665.652 m
Exceptions	0.000 m
Additions	0.000 m
Net Length of Project	1,665.652 m
Net Length of Bridges	0.000 m
Net Length of Road	1,665.652 m

APPROVED - DATE

JIM ARMOUR, P.E., ACTING CITY ENGINEER  
CITY OF WICHITA, KANSAS



**BAUGHMAN COMPANY, P.A.**  
ENGINEERING, SURVEYING, & PLANNING  
316-262-7271 \* 315 ELLIS \* WICHITA, KANSAS 67211