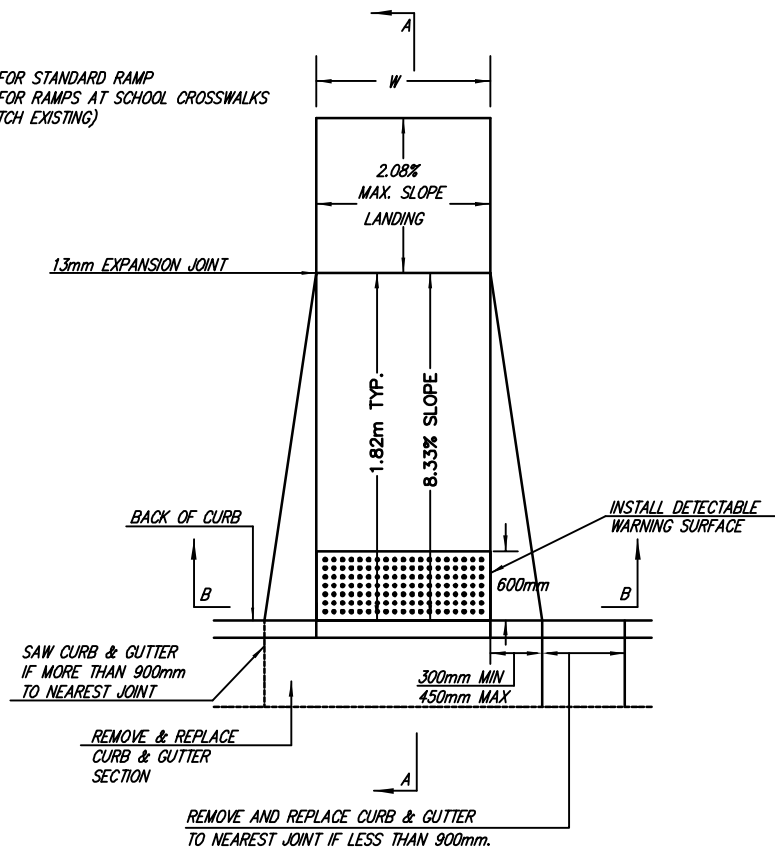


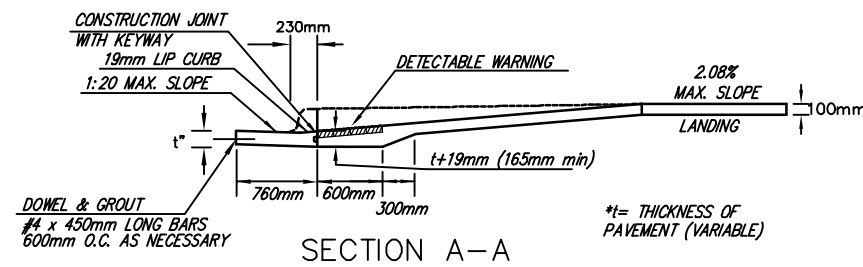
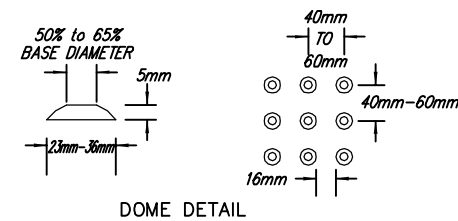
W= 1.22m FOR STANDARD RAMP
W= 1.52m FOR RAMPS AT SCHOOL CROSSWALKS
(OR TO MATCH EXISTING)



Note: All work associated with the installation of the wheelchair ramps, including construction of depressed curb and gutter, shall be SUBSIDIARY to the bid item "Wheelchair Ramp."

SAW JOINT DETAIL "A"

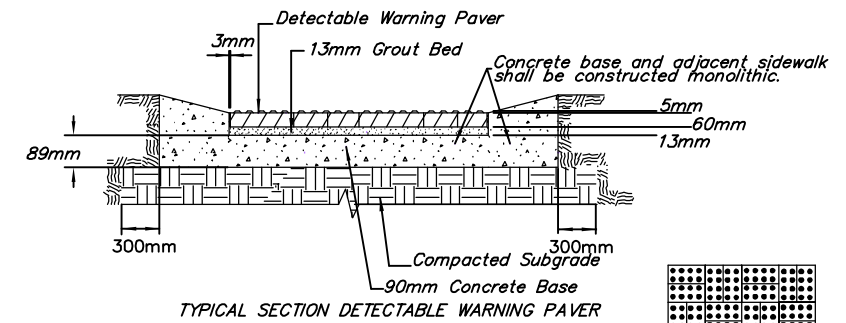
SAW JOINT DETAIL "B"



STANDARD WHEELCHAIR RAMP WITH DETECTABLE WARNING

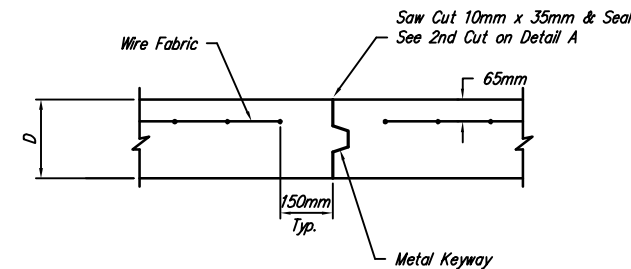
CONSTRUCTION DETAIL FOR STREETS WITH COMBINED CURB & GUTTER (TYPE A)

AUGUST 4, 2003

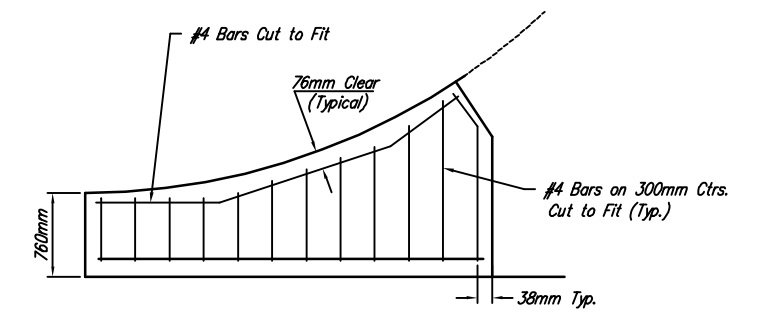


NOTE: RAMPS TO COMPLY WITH LATEST ADAAG GUIDELINES. PAVESTONE DETECTABLE WARNING PAVERS (OR AN APPROVED EQUAL) SHALL BE USED IN ALL WHEELCHAIR RAMPS. THE RED PAVER SHALL BE INSTALLED USING A BASKET WEAVE/PARQUET PATTERN. OTHER PATTERNS MAY BE USED WITH APPROVAL OF ENGINEER. SAND FILL JOINTS. ALIGN DOMES IN THE DIRECTION OF PEDESTRIAN TRAVEL.

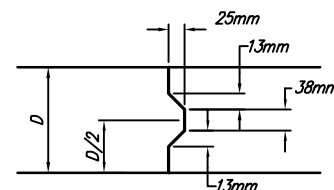
SECTION B-B



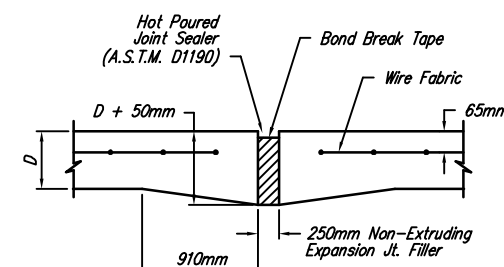
OPTIONAL CONTRACTION JOINT (CONSTRUCTION JOINT)



WING REINFORCING DETAIL

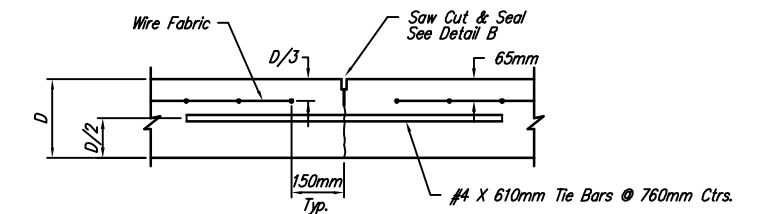


KEYWAY DETAIL

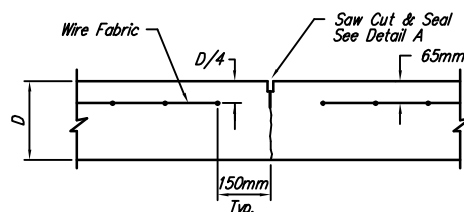


EXPANSION JOINT

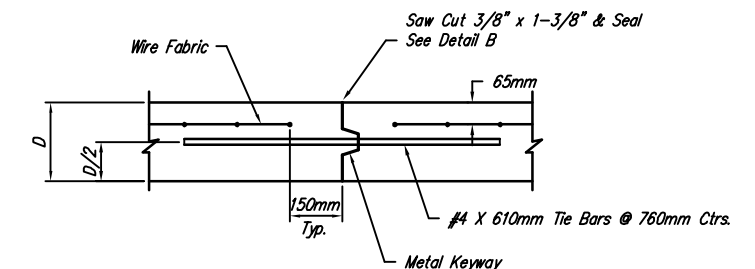
NOTE: Extra Thickness to be Subsidiary to Price of Square Yards Pavement



LONGITUDINAL JOINT DETAIL (L.J.)



CONTRACTION JOINT DETAIL (C.J.)



OPTIONAL LONGITUDINAL JOINT DETAIL (L.J.) (CONSTRUCTION JOINT)



| | | |
|-----------------------------|---------------------------|---|
| PROJECT NUMBER 472-83863 | SHEET NAME Pvmt Detail | ENGINEERING DIRECTORY F:\29th North\Detail |
| DESIGN | DRAWN | APPROVED |
| STAFF | JFB | None |
| DATE Oct. 2004 | SCALE None | BAUGHMAN NO 02-02-E232 |

CAPITAL IMPROVEMENT PROJECT
STANDARD PAVEMENT DETAIL

BAUGHMAN COMPANY, P.A.
ENGINEERING, SURVEYING, & PLANNING
316-262-7271 • 315 ELLIS • WICHITA, KANSAS 67211