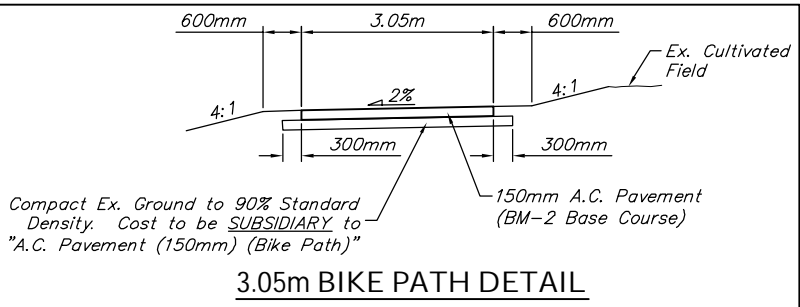
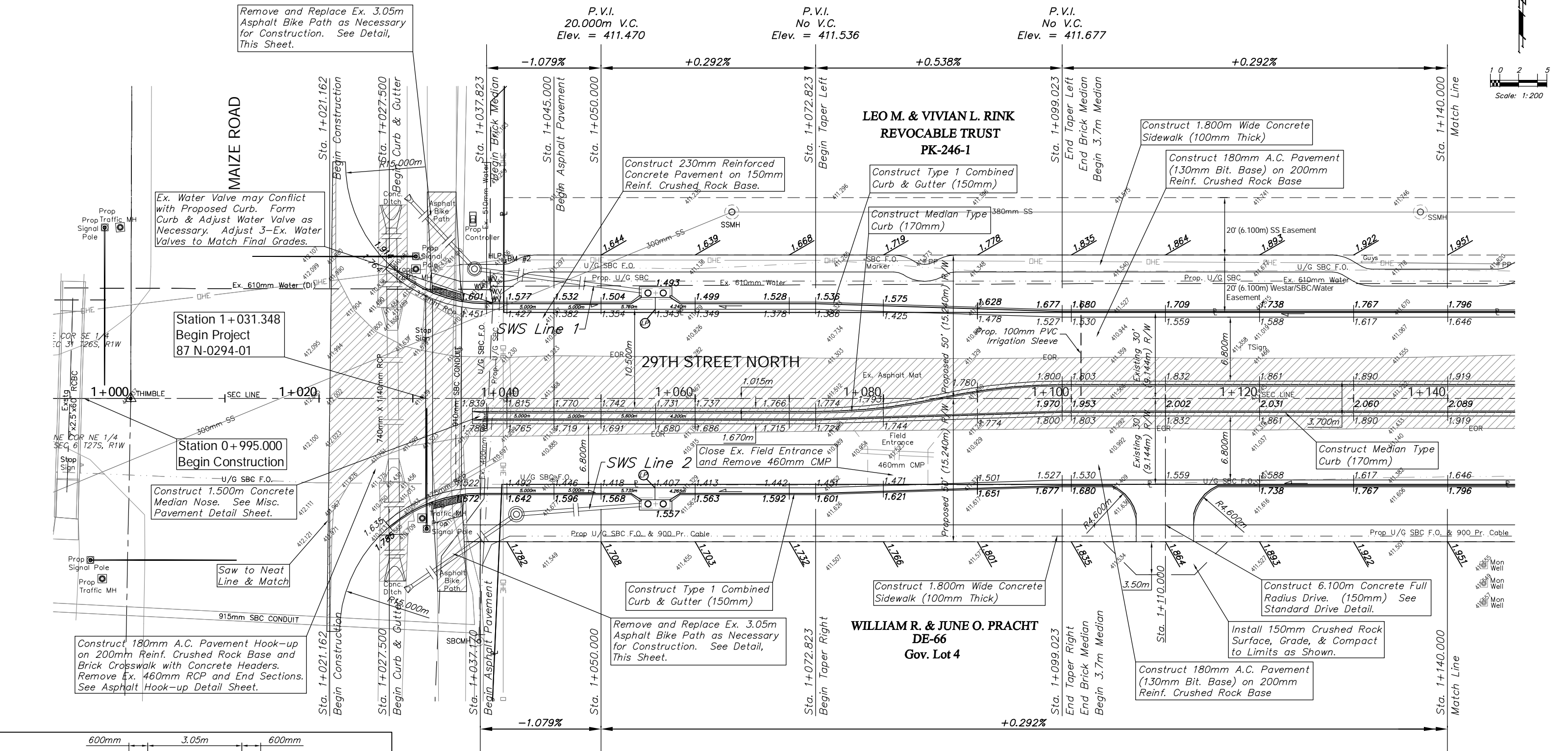
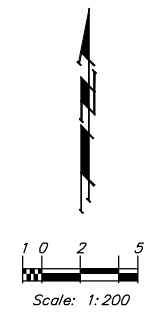


BENCHMARK:
 BM #2 - RR Spike in the South Face of Power Pole at the Northeast Corner of Maize Road and 29th Street South.
 Sta. 1+039.59, 14.74m Lt.
 Elev. 411.678 SI Units (1350.65 MSL)



Note:
 Pavement, Sidewalks, and Etc. To Be Removed Are Indicated By:

P.V.I.
 20,000m V.C.
 Elev. = 411.534

PROJECT NUMBER 472-83863		SHEET NAME PAV01		ENGINEERING DIRECTORY F:\29th North\Earth\dwg		CAPITAL IMPROVEMENT PROJECT 29TH STREET NORTH PAVING Sta. 1+037.823 to Sta. 1+140.000		BAUGHMAN COMPANY, P.A. ENGINEERING, SURVEYING, & PLANNING 316-262-7271 • 315 ELLIS • WICHITA, KANSAS 67211		SHEET 12 OF 129
DESIGN TPV	DRAWN TPV	APPROVED JFB	DATE Oct. 2004	SCALE Noted	BAUGHMAN NO 02-02-E232					