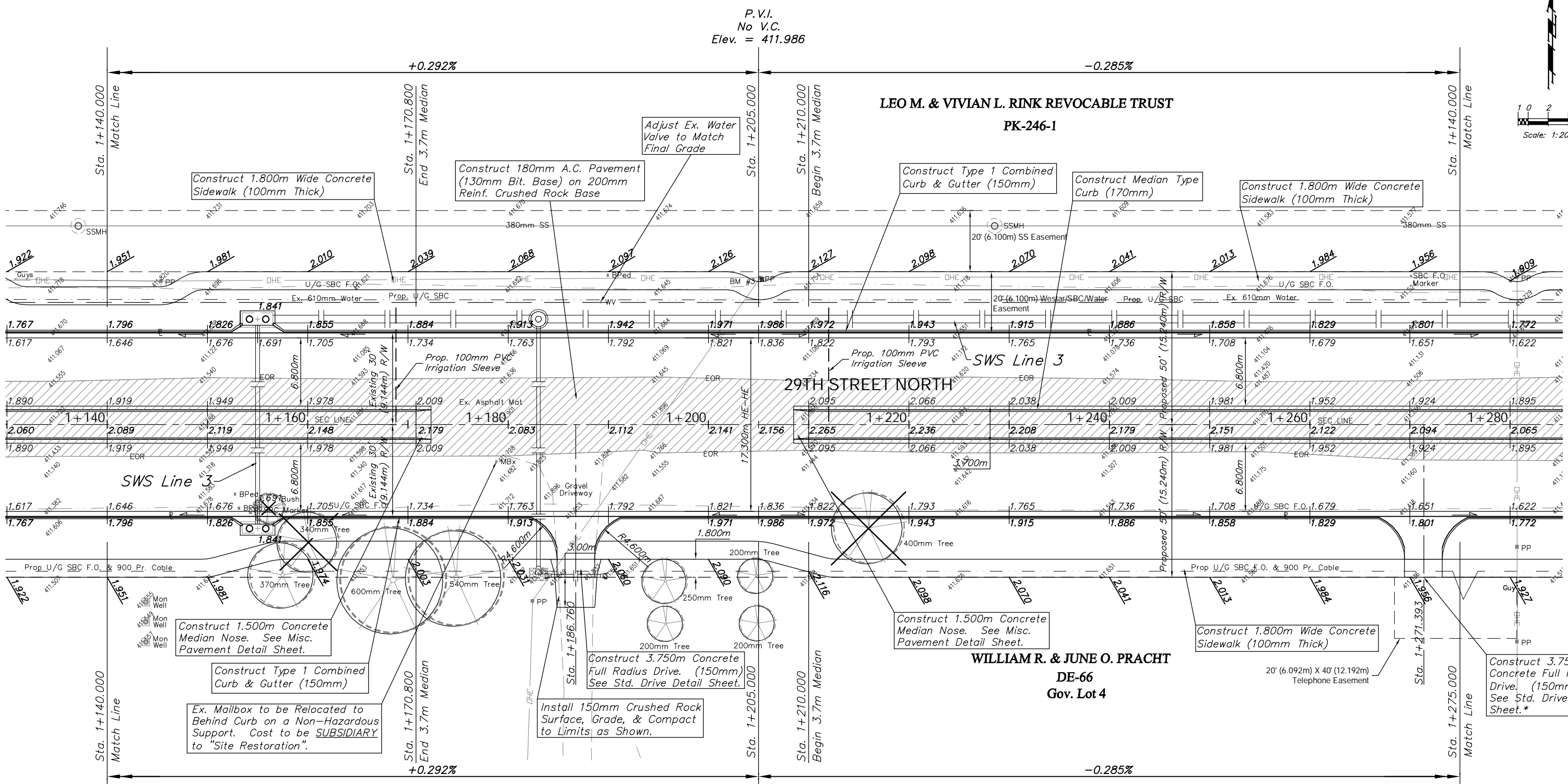
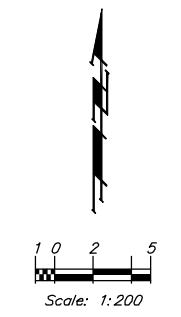


**BENCHMARK:**  
 BM #3 - Small RR Spike in the South Face of the 4th Power Pole East of Maize Road on the North Side of 29th Street North.  
 Sta. 1+205.18, 14.69m Lt.  
 Elev. 412.090 SI Units (1352.00 MSL)



Construct 1.800m Wide Concrete Sidewalk (100mm Thick)

Construct 180mm A.C. Pavement (130mm Bit. Base) on 200mm Reinf. Crushed Rock Base

Adjust Ex. Water Valve to Match Final Grade

Construct Type 1 Combined Curb & Gutter (150mm)

Construct Median Type Curb (170mm)

Construct 1.800m Wide Concrete Sidewalk (100mm Thick)

Construct 1.500m Concrete Median Nose. See Misc. Pavement Detail Sheet.

Construct Type 1 Combined Curb & Gutter (150mm)

Ex. Mailbox to be Relocated to Behind Curb on a Non-Hazardous Support. Cost to be SUBSIDIARY to "Site Restoration".

Construct 3.750m Concrete Full Radius Drive. (150mm) See Std. Drive Detail Sheet.

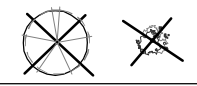
Install 150mm Crushed Rock Surface, Grade, & Compact to Limits as Shown.

Construct 1.500m Concrete Median Nose. See Misc. Pavement Detail Sheet.

Construct 1.800m Wide Concrete Sidewalk (100mm Thick)

Construct 3.750m Concrete Full Radius Drive. (150mm) See Std. Drive Detail Sheet.\*

**Note:**  
Trees/Shrubs to be removed are marked thus:



**Note:**  
Pavement, Sidewalks, and Etc. To Be Removed Are Indicated By:



\* The Location Shown for this Drive is Tentative. Contact Jim Tobin with SBC at 268-2759 Prior to Construction for Final Drive Location

PROJECT NUMBER 472-83863		SHEET NAME Pav02		ENGINEERING DIRECTORY F:\29th North\Earth\dwg	
DESIGN TPV	DRAWN TPV	APPROVED JFB	DATE Oct. 2004	SCALE Noted	BAUGHMAN NO 02-02-E232

CAPITAL IMPROVEMENT PROJECT  
 29TH STREET NORTH PAVING  
 Sta. 1+140.000 to Sta. 1+275.000

**BAUGHMAN COMPANY, P.A.**  
 ENGINEERING, SURVEYING, & PLANNING  
 316-262-7271 • 315 ELLIS • WICHITA, KANSAS 67211

