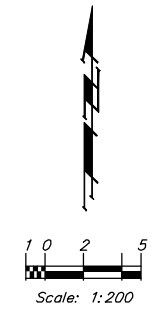
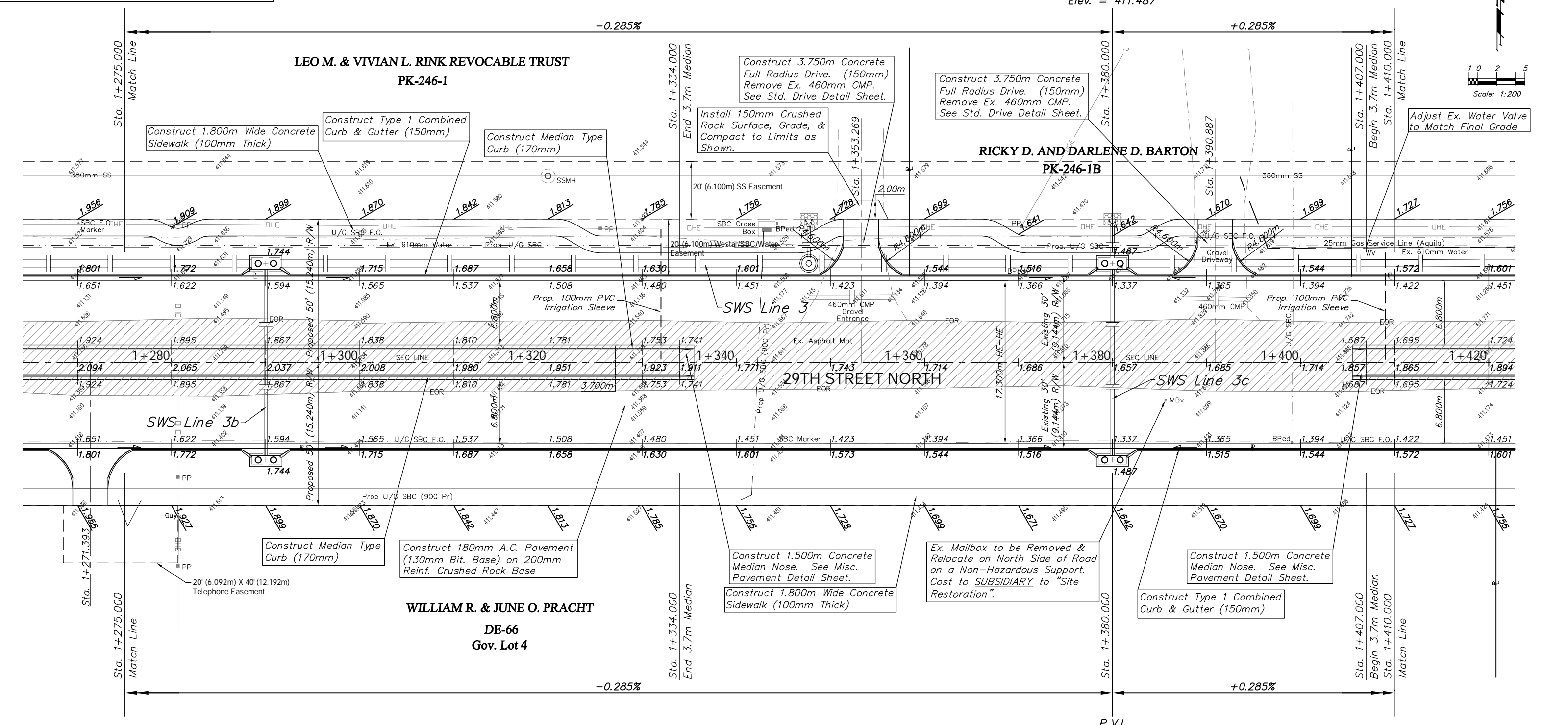


BENCHMARK:
 BM #3 - Small RR Spike in the South Face of the 4th Power Pole East of Maize Road on the North Side of 29th Street North.
 Sta. 1+205.18, 14.69m Lt.
 Elev. 412.090 SI Units (1352.00 MSL)

BM #4 - 1/2" Rebar in the South Face of the 8th Power Pole East of Maize Road on the North Side of 29th Street North.
 Sta. 1+434.14, 14.36m Lt.
 Elev. 412.013 SI Units (1351.75 MSL)



Note:
 Pavement, Sidewalks, and Etc. To Be Removed Are Indicated By:

| | | | | | |
|-----------------------------|--------------|---------------------|-------------------|--------------------------------------------------|---------------------------|
| PROJECT NUMBER 472-83863 | | SHEET NAME Pav03 | | ENGINEERING DIRECTORY F:\29th North\Earth\dwg | |
| DESIGN TPV | DRAWN TPV | APPROVED JFB | DATE Oct. 2004 | SCALE Noted | BAUGHMAN NO 02-02-E232 |

CAPITAL IMPROVEMENT PROJECT
29TH STREET NORTH PAVING
 Sta. 1+275.000 to Sta. 1+410.000

BAUGHMAN COMPANY, P.A.
 ENGINEERING, SURVEYING, & PLANNING
 316-262-7271 • 315 ELLIS • WICHITA, KANSAS 67211