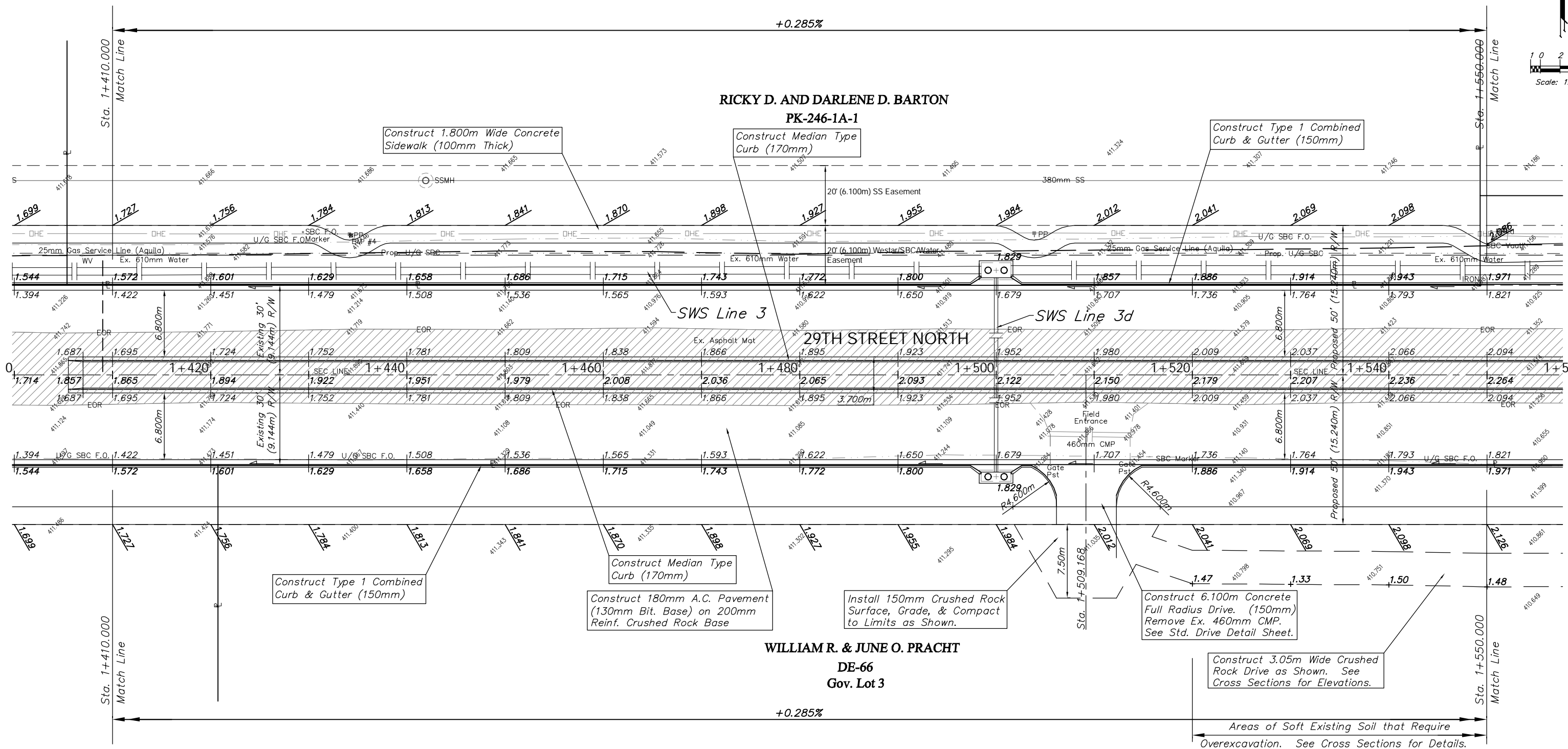


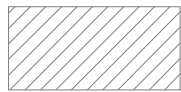
**BENCHMARK:**  
 BM #4 - 1/2" Rebar in the South Face of the 8th Power Pole East of Maize Road on the North Side of 29th Street North.  
 Sta. 1+434.14, 14.36m Lt.  
 Elev. 412.013 SI Units (1351.75 MSL)

FHWA REGION NO.	STATE	PROJECT NO.	FISCAL YEAR	SHEET NO.	TOTAL SHEETS
7	KANSAS	87 N-0294-01	2004	15	129



Areas of Soft Existing Soil that Require Overexcavation. See Cross Sections for Details.

**Note:**  
 Pavement, Sidewalks, and Etc. To Be Removed Are Indicated By:



PROJECT NUMBER 472-83863		SHEET NAME Pav04		ENGINEERING DIRECTORY F:\29th North\Earth\dwg	
DESIGN TPV	DRAWN TPV	APPROVED JFB	DATE Oct. 2004	SCALE Noted	BAUGHMAN NO 02-02-E232

CAPITAL IMPROVEMENT PROJECT  
**29TH STREET NORTH PAVING**  
 Sta. 1+410.000 to Sta. 1+550.000

**BAUGHMAN COMPANY, P.A.**  
 ENGINEERING, SURVEYING, & PLANNING  
 316-262-7271 • 315 ELLIS • WICHITA, KANSAS 67211

SHEET  
 OF  
 15  
 129