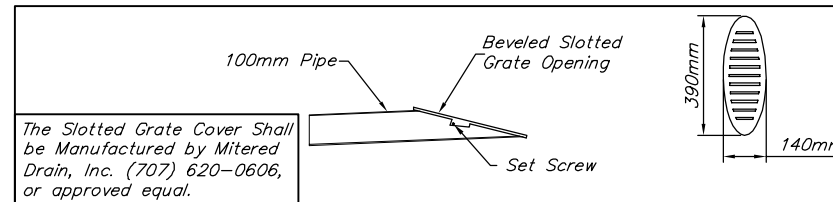
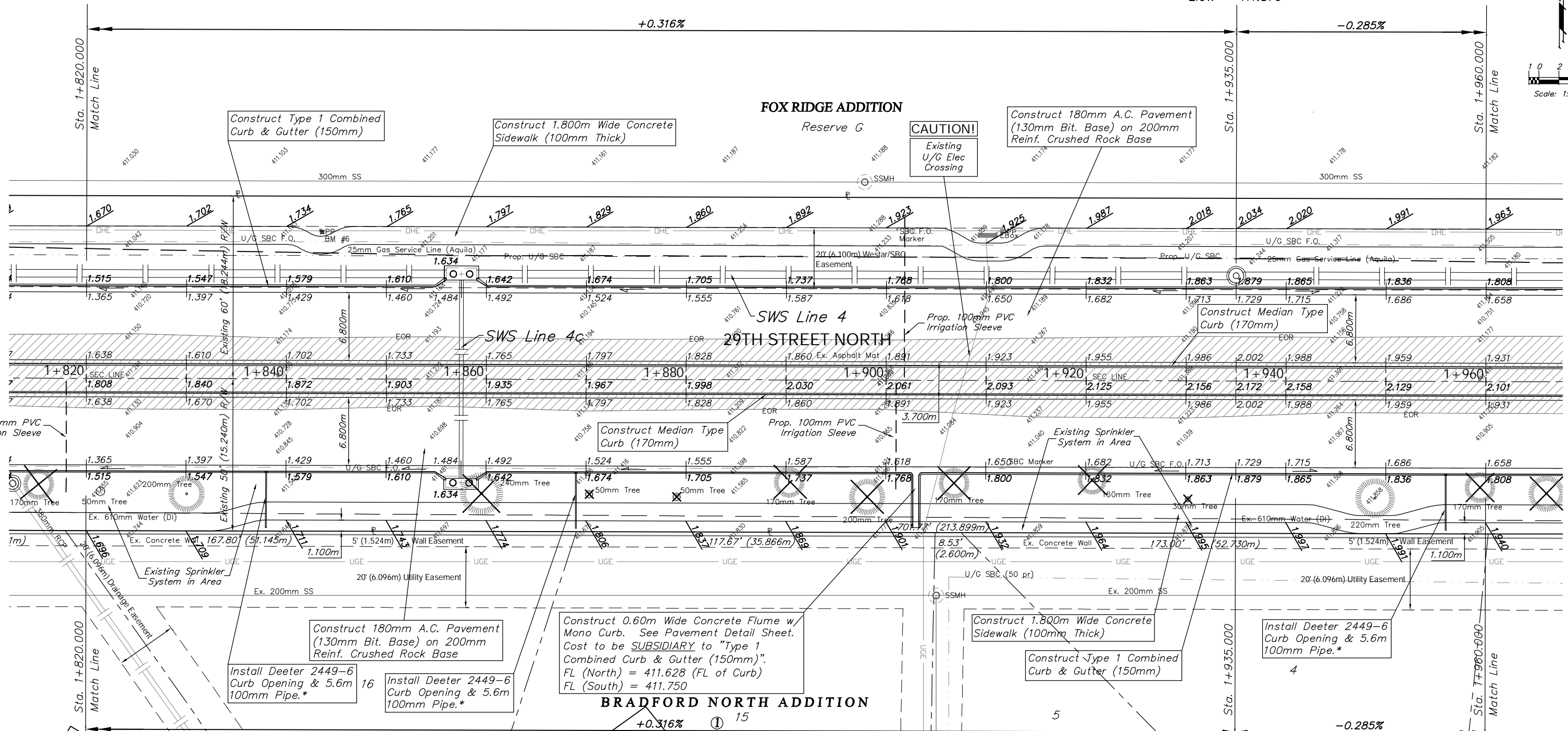


BENCHMARK:
 BM #6 - RR Spike in the South Face of the 3rd Power Pole West of Keith on the North Side of 29th Street North.
 Sta. 1+843.42, 14.83m Lt.
 Elev. 411.379 SI Units (1349.67 MSL)

FHWA REGION NO.	STATE	PROJECT NO.	FISCAL YEAR	SHEET NO.	TOTAL SHEETS
7	KANSAS	87 N-0294-01	2004	18	129



P.V.I.
 No V.C.
 Elev. = 411.879



P.V.I.
 No V.C.
 Elev. = 411.879

* The 100mm Pipe Shall be Either PVC or Poly Flex Pipe and Shall Have a Beveled Slotted Grate Opening. See Detail, This Sheet. The Cost, Including the Necessary Fittings, Shall be *SUBSIDIARY* to the Bid Item "Curb Opening (150mm)".

When Backfilling Behind the Sidewalk Adjacent to the Bradford North Addition, the Contractor Shall Make Sure the Drain Holes in the Existing Concrete Wall are Clear and Functioning. The Contractor Shall Grade Behind the Sidewalk to Drain the Runoff to the Proposed Drains.

Note:
 Trees/Shrubs to be removed are marked thus:

Note:
 Pavement, Sidewalks, and Etc. To Be Removed Are Indicated By:

KDOT METRIC

PROJECT NUMBER 472-83863		SHEET NAME Pav07		ENGINEERING DIRECTORY F:\29th North\Earth\dwg		CAPITAL IMPROVEMENT PROJECT 29TH STREET NORTH PAVING Sta. 1+820.000 to Sta. 1+950.000		BAUGHMAN COMPANY, P.A. ENGINEERING, SURVEYING, & PLANNING 316-262-7271 • 315 ELLIS • WICHITA, KANSAS 67211		SHEET 18 OF 129	
DESIGN TPV	DRAWN TPV	APPROVED JFB	DATE Oct. 2004	SCALE Noted	BAUGHMAN NO 02-02-E232						