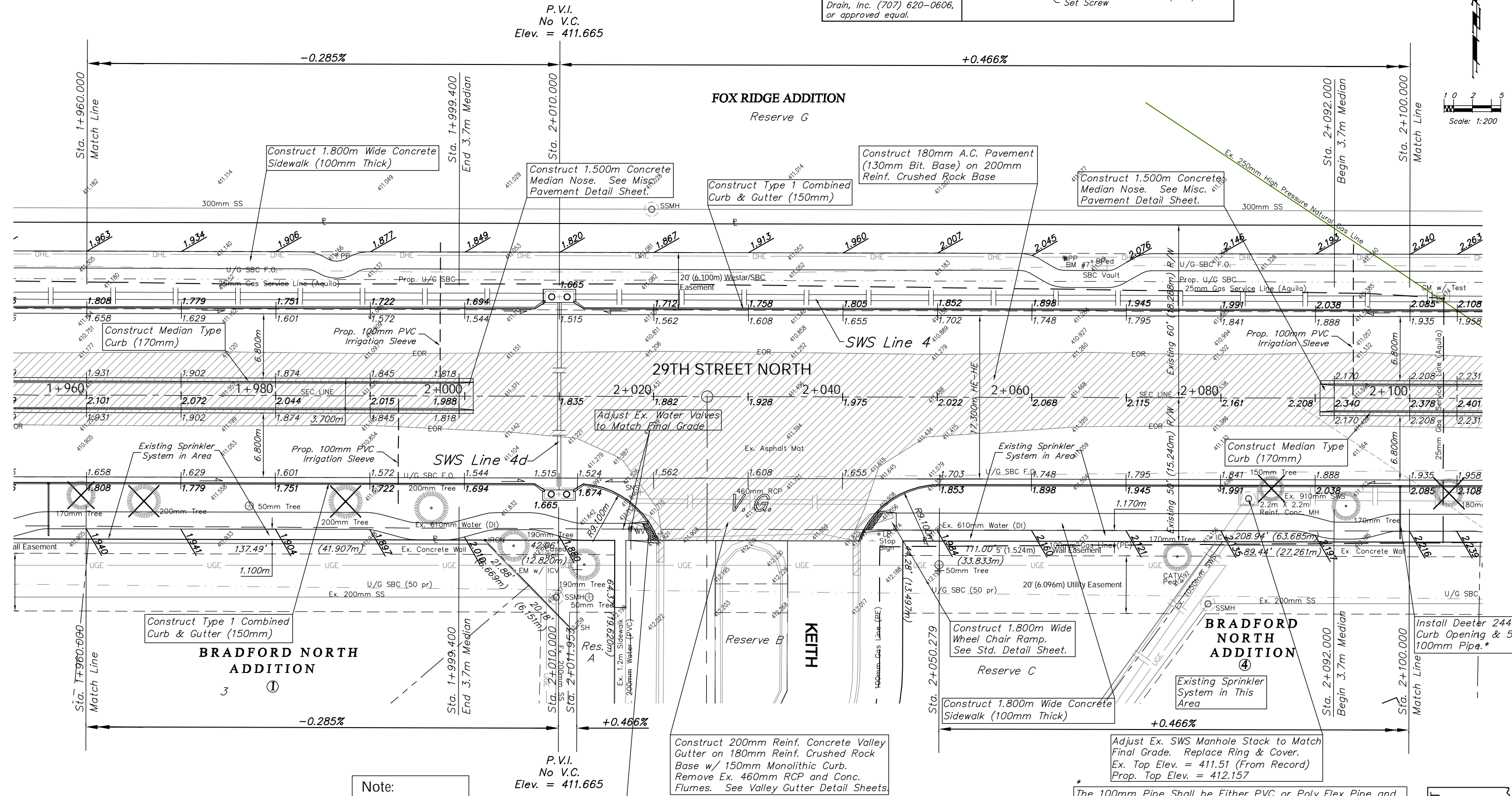
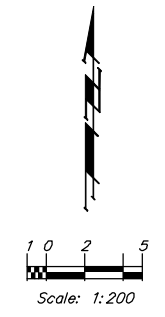
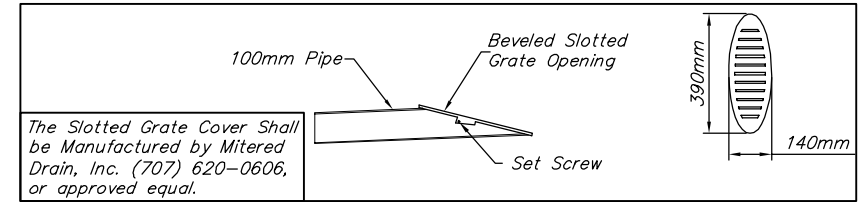


BENCHMARK:
 BM #7 - Small RR Spike in the South Face of the 1st Power Pole East of Keith on the North Side of 29th Street North.
 Sta. 2+063.40, 14.84m Lt.
 Elev. 411.437 SI Units (1349.86 MSL)



When Backfilling Behind the Sidewalk Adjacent to the Bradford North Addition, the Contractor Shall Make Sure the Drain Holes in the Existing Concrete Wall are Clear and Functioning. The Contractor Shall Grade Behind the Sidewalk to Drain the Runoff to the Proposed Drains.

Note:
 Pavement, Sidewalks, and Etc. To Be Removed Are Indicated By:

Note:
 Trees/Shrubs to be removed are marked thus:

Construct 1.800m Wide Wheel Chair Ramp. See Std. Detail Sheet.

Construct 200mm Reinf. Concrete Valley Gutter on 180mm Reinf. Crushed Rock Base w/ 150mm Monolithic Curb. Remove Ex. 460mm RCP and Conc. Flumes. See Valley Gutter Detail Sheets.

Construct 1.800m Wide Wheel Chair Ramp. See Std. Detail Sheet.

Construct 1.800m Wide Concrete Sidewalk (100mm Thick)

* The 100mm Pipe Shall be Either PVC or Poly Flex Pipe and Shall Have a Beveled Slotted Grate Opening. See Detail, This Sheet. The Cost, Including the Necessary Fittings, Shall be SUBSIDIARY to the Bid Item "Curb Opening (150mm)".

Install Deeter 2449-6 Curb Opening & 5.6m 100mm Pipe.*

PROJECT NUMBER 472-83863		SHEET NAME Pav08		ENGINEERING DIRECTORY F:\29th North\Earth\dwg	
DESIGN TPV	DRAWN TPV	APPROVED JFB	DATE Oct. 2004	SCALE Noted	BAUGHMAN NO 02-02-E232

CAPITAL IMPROVEMENT PROJECT
29TH STREET NORTH PAVING
 Sta. 1+950.000 to Sta. 2+100.00

BAUGHMAN COMPANY, P.A.
 ENGINEERING, SURVEYING, & PLANNING
 316-262-7271 • 315 ELLIS • WICHITA, KANSAS 67211