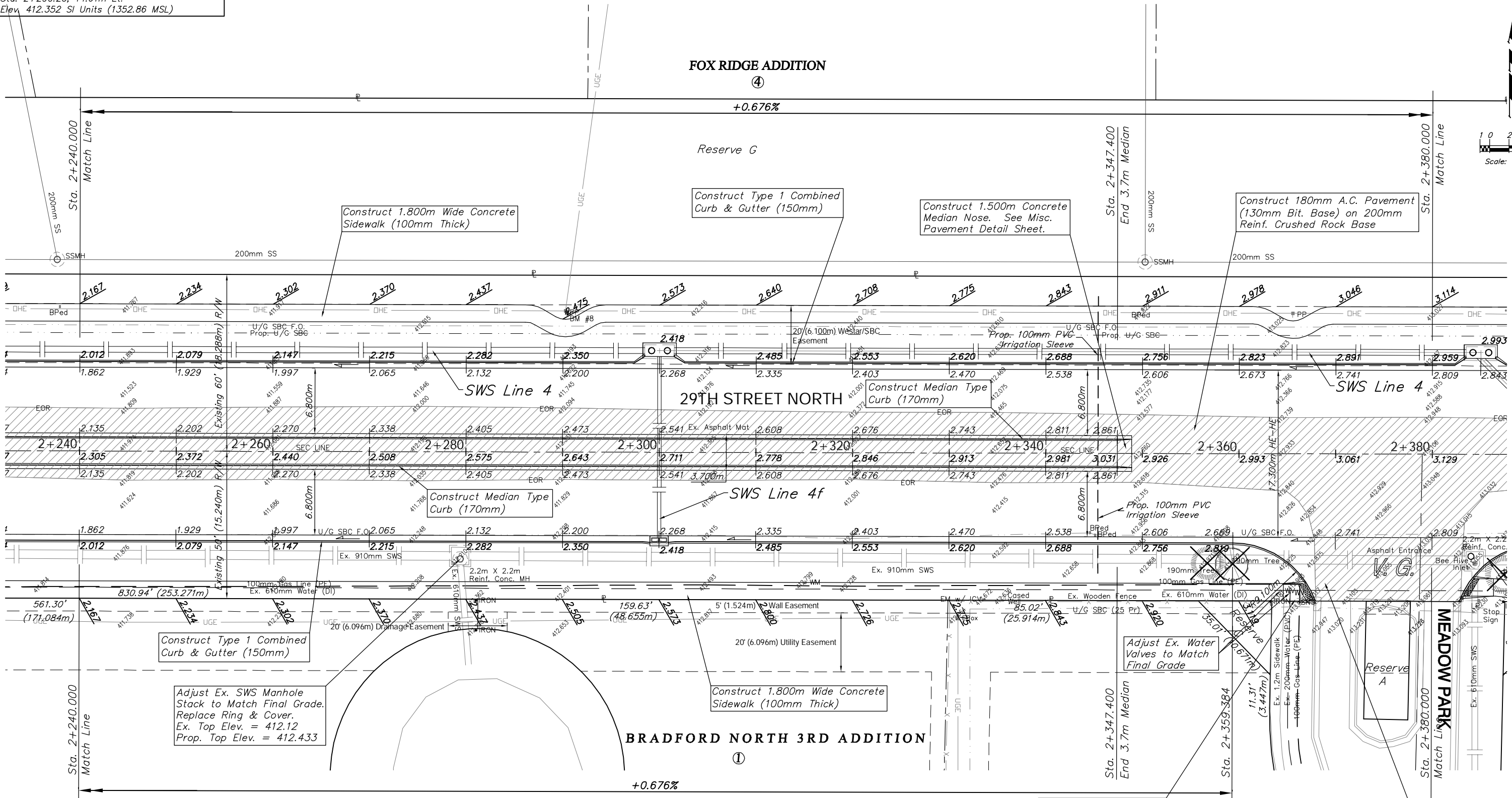


BENCHMARK:
 BM #8 - Small RR Spike in the South Face of the 2nd Power Pole West of Meadow Park on the North Side of 29th Street North.
 Sta. 2+290.26, 14.61m Lt.
 Elev. 412.352 SI Units (1352.86 MSL)

FOX RIDGE ADDITION
 ④

Reserve G

BRADFORD NORTH 3RD ADDITION
 ①



Construct Type 1 Combined Curb & Gutter (150mm)

Adjust Ex. SWS Manhole Stack to Match Final Grade. Replace Ring & Cover. Ex. Top Elev. = 412.12 Prop. Top Elev. = 412.433

Note:
 Trees/Shrubs to be removed are marked thus:



Note:
 Pavement, Sidewalks, and Etc. To Be Removed Are Indicated By:



PROJECT NUMBER 472-83863		SHEET NAME Pav10		ENGINEERING DIRECTORY F:\29th North\Earth\dwg	
DESIGN TPV	DRAWN TPV	APPROVED JFB	DATE Oct. 2004	SCALE Noted	BAUGHMAN NO 02-02-E232

CAPITAL IMPROVEMENT PROJECT
29TH STREET NORTH PAVING
 Sta. 2+240.000 to Sta. 2+380.000

BAUGHMAN COMPANY, P.A.
 ENGINEERING, SURVEYING, & PLANNING
 316-262-7271 • 315 ELLIS • WICHITA, KANSAS 67211

P.V.I.
 No V.C.
 Elev. = 412.819
 Construct 200mm Reinf. Concrete Valley Gutter on 180mm Reinf. Crushed Rock Base w/ 150mm Monolithic Curb. See Valley Gutter Detail Sheets.

