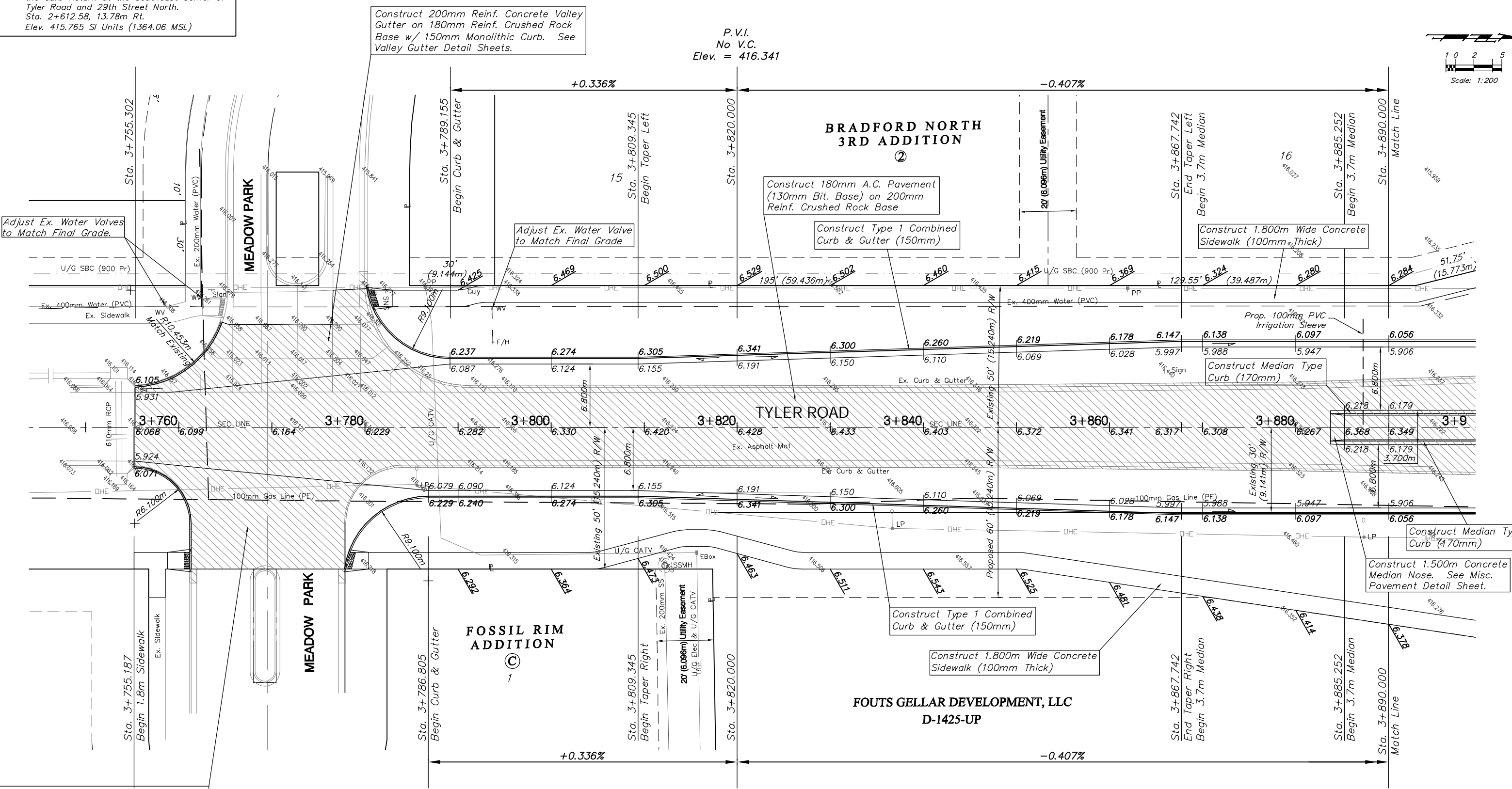
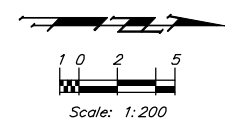


**BENCHMARK:**  
 BM #9 - "□" on the Top of Curb at the South End of the Curb Return at the Southeast Corner of Tyler Road and 29th Street North.  
 Sta. 2+612.58, 13.78m Rt.  
 Elev. 415.765 SI Units (1364.06 MSL)



Construct 200mm Reinf. Concrete Valley Gutter on 180mm Reinf. Crushed Rock Base w/ 150mm Monolithic Curb. See Valley Gutter Detail Sheets.

P.V.I.  
 No V.C.  
 Elev. = 416.341

**Note:**  
 Pavement, Sidewalks, and Etc. To Be Removed Are Indicated By:

|                             |              |                     |                   |  |                           |
|-----------------------------|--------------|---------------------|-------------------|--|---------------------------|
| PROJECT NUMBER<br>472-83863 |              | SHEET NAME<br>Pav14 |                   | ENGINEERING DIRECTORY<br>F:\29th North\Earth\dwg |                           |
| DESIGN<br>TPV               | DRAWN<br>TPV | APPROVED<br>JFB     | DATE<br>Oct. 2004 | SCALE<br>Noted                                   | BAUGHMAN NO<br>02-02-E232 |

CAPITAL IMPROVEMENT PROJECT  
**TYLER ROAD PAVING**  
 Sta. 3+755.302 to Sta. 3+890.000

**BAUGHMAN COMPANY, P.A.**  
 ENGINEERING, SURVEYING, & PLANNING  
 316-262-7271 • 315 ELLIS • WICHITA, KANSAS 67211

