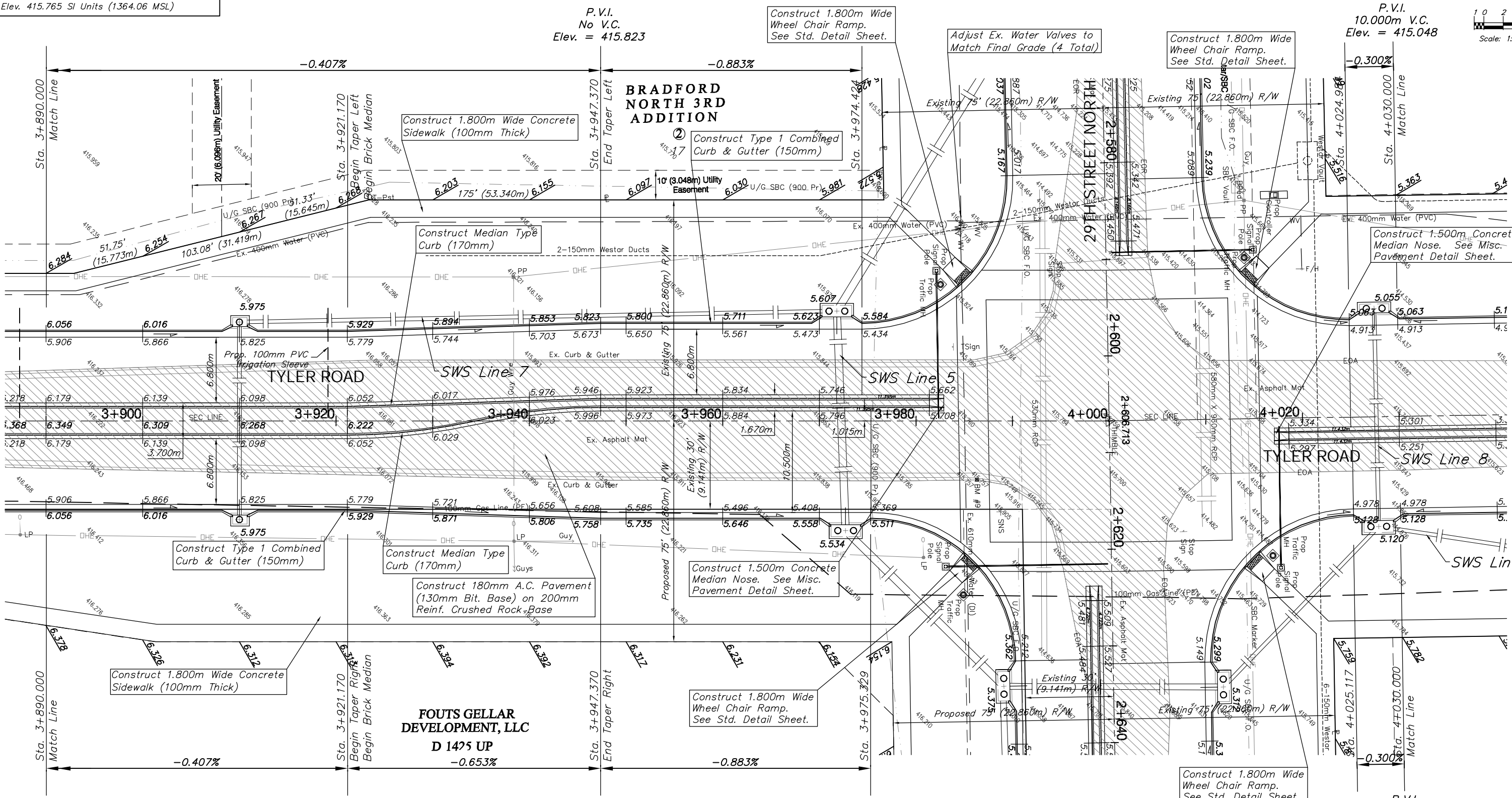
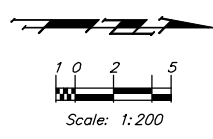


**BENCHMARK:**  
 BM #9 - "□" on the Top of Curb at the South End of the Curb Return at the Southeast Corner of Tyler Road and 29th Street North.  
 Sta. 2+612.58, 13.78m Rt.  
 Elev. 415.765 SI Units (1364.06 MSL)



P.V.I.  
 No V.C.  
 Elev. = 415.823

P.V.I.  
 10.000m V.C.  
 Elev. = 415.048

P.V.I.  
 No V.C.  
 Elev. = 415.929

P.V.I.  
 No V.C.  
 Elev. = 415.758

**Note:**  
 Pavement, Sidewalks, and Etc. To Be Removed Are Indicated By:

PROJECT NUMBER 472-83863		SHEET NAME Pav15		ENGINEERING DIRECTORY F:\29th North\Earth\dwg	
DESIGN TPV	DRAWN TPV	APPROVED JFB	DATE Oct. 2004	SCALE Noted	BAUGHMAN NO 02-02-E232

CAPITAL IMPROVEMENT PROJECT  
**TYLER ROAD PAVING**  
 Sta. 3+890.000 to Sta. 4+030.000

**BAUGHMAN COMPANY, P.A.**  
 ENGINEERING, SURVEYING, & PLANNING  
 316-262-7271 • 315 ELLIS • WICHITA, KANSAS 67211

