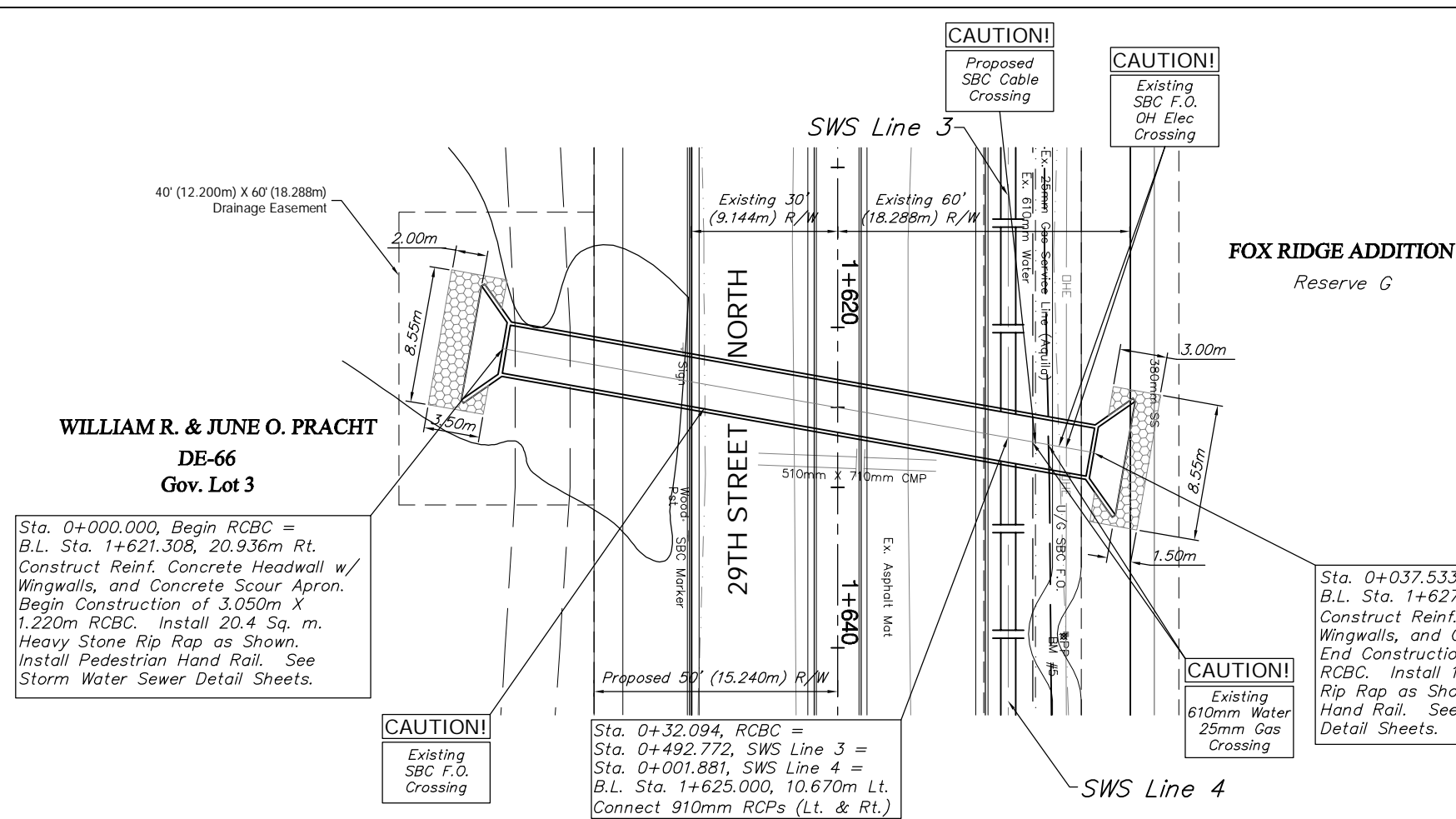


From Record Information, Clearances Between the Proposed Storm System and the Existing 610mm Water Line are Adequate. Should the Water Line be Exposed or the Clearances Become Less Than Nominal as deemed by the Engineer, the Contractor Shall be Responsible to Provide Protection and/or encasement as necessary to ensure the integrity of the Water Line. Cost of the Protection/Encasement Shall be SUBSIDIARY to the Project.

DRAINAGE CALCULATIONS	
Drainage Area:	478 acres
CN ₂ :	73
Q ₂ :	1.0 cfs
Q _s :	23.9 cfs
Q ₁₀₀ :	226 cfs

BENCHMARK:
 BM #5 - 80d Spike in the South Face of the 11th Power Pole East (3/8 mile) of Maize Road on the North Side of 29th Street North.
 Sta. 1+639.15, 14.28m Lt.
 Elev. 410.880 SI Units (1348.03 MSL)



The Contractor Shall Remove the Existing Low Water Crossing South of the Existing CMP. Cost to be SUBSIDIARY to the Bid Item "Removal of Existing Structures".

