

BENCHMARK:
 BM #2 - RR Spike in the South Face of Power Pole at the Northeast Corner of Maize Road and 29th Street South.
 Sta. 1+039.59, 14.74m Lt.
 Elev. 411.678 SI Units (1350.65 MSL)

B.L. Sta. 1+027.694, 20.542 Lt.
 Remove Ex. Concrete End Section. Install 13.343m 740mm X 1140mm RCP w/ End Section. Connect to Existing RCP.
 Flow In = 410.697

Remove & Replace the Ex. Concrete Ditch as Necessary.

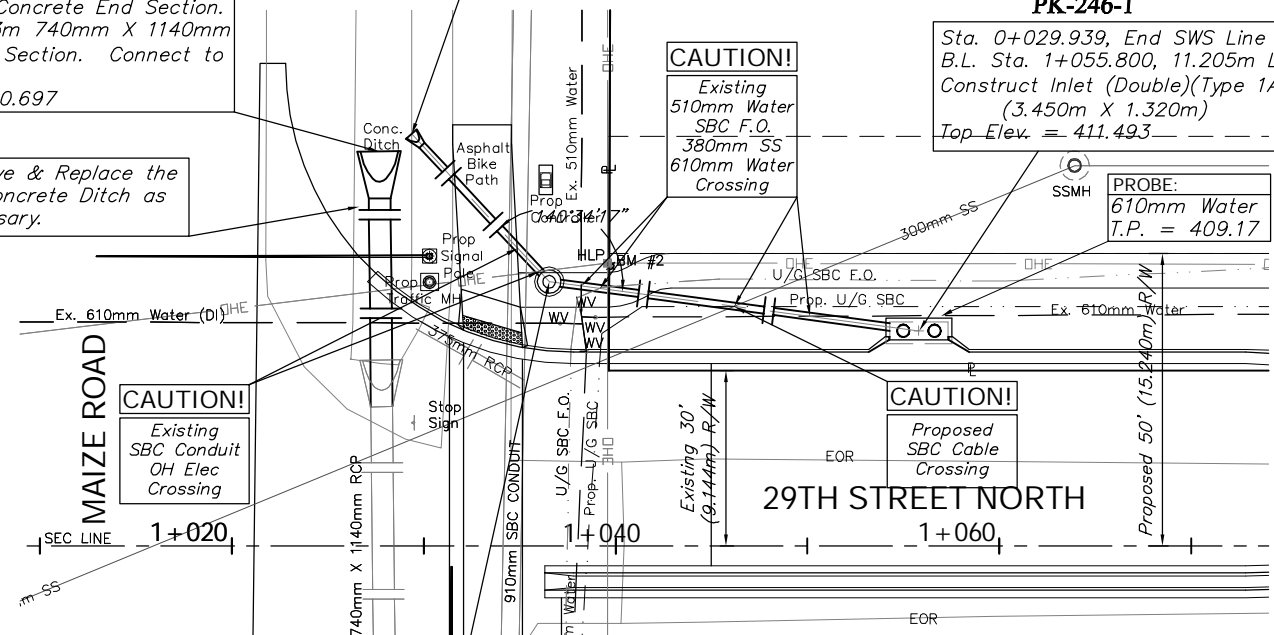
Sta. 0+000.000, Begin SWS Line 1 = B.L. Sta. 1+029.372, 21.449m Lt.
 Install 1-15" Concrete End Section. Remove Ex. Concrete Ditch as Necessary and Grout End Section into Place.

**LEO M. & VIVIAN L. RINK
 REVOCABLE TRUST
 PK-246-1**

Sta. 0+029.939, End SWS Line 1 = B.L. Sta. 1+055.800, 11.205m Lt.
 Construct Inlet (Double)(Type 1A) (3.450m X 1.320m)
 Top Elev. = 411.493

PROBE:
 610mm Water
 T.P. = 409.17

SCALE:
 1:200 HORIZONTAL
 1:40 VERTICAL



Sta. 0+010.511, SWS Line 1 = B.L. Sta. 1+036.541, 13.763m Lt.
 Construct Shallow Type "P" Manhole (1.22m Dia.) w/ Flat Concrete Slab Top.
 Top Elev. = 411.568

BENCHMARK:
 BM #2 - RR Spike in the South Face of Power Pole at the Northeast Corner of Maize Road and 29th Street South.
 Sta. 1+039.59, 14.74m Lt.
 Elev. 411.678 SI Units (1350.65 MSL)

B.L. Sta. 1+028.080, 19.397m Rt.
 Remove Ex. Concrete End Section. Install 12.984m 740mm X 1140mm RCP w/ End Section. Connect to Existing RCP.
 Flow Out = 410.465

Remove & Replace the Ex. Concrete Ditch as Necessary.

Sta. 0+000.000, Begin SWS Line 2 = B.L. Sta. 1+029.257, 20.364m Rt.
 Install 1-380mm Concrete End Section. Remove Ex. Concrete Ditch as Necessary and Grout End Section into Place.

CAUTION!
 Proposed SBC Cable Crossing

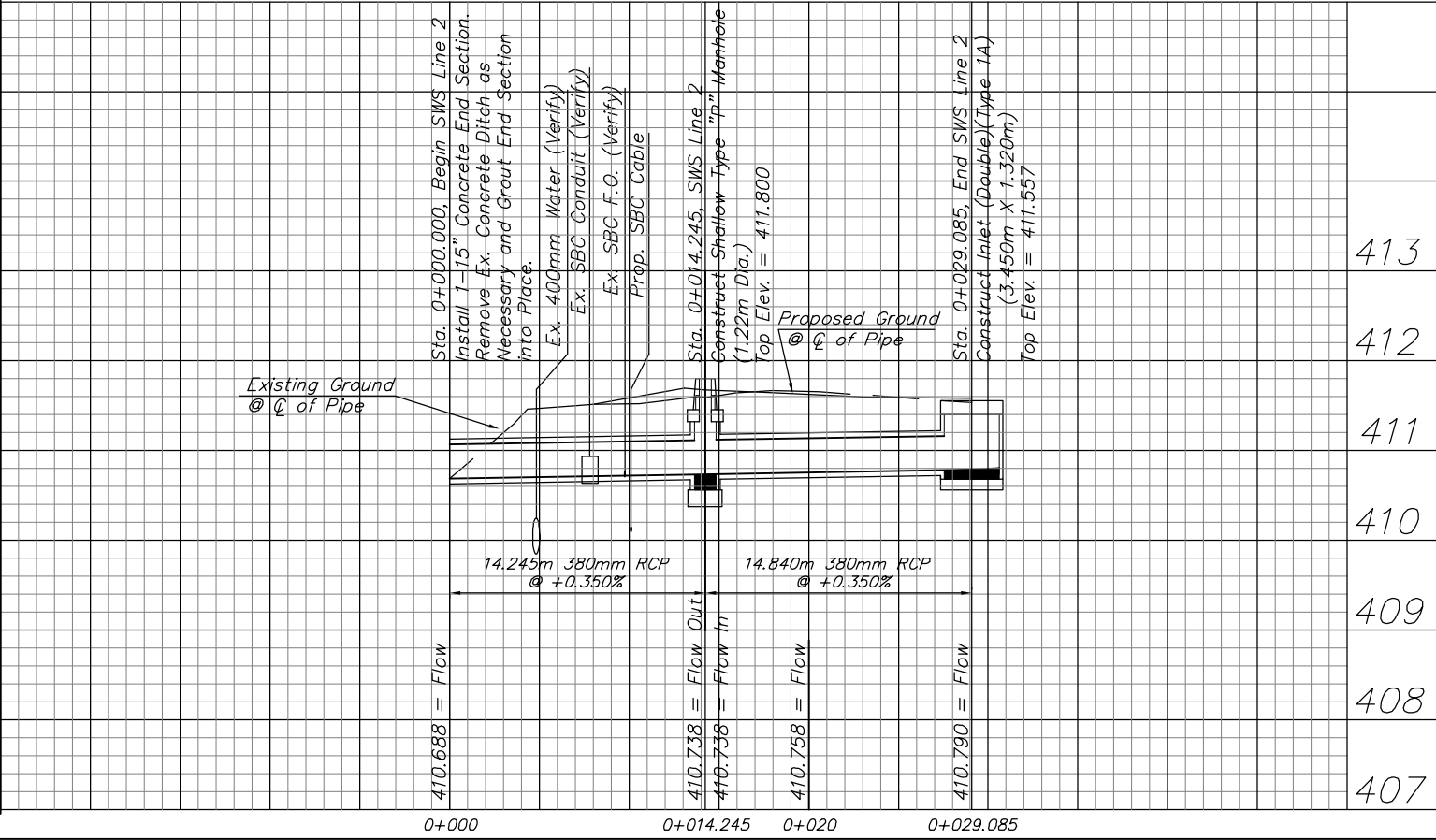
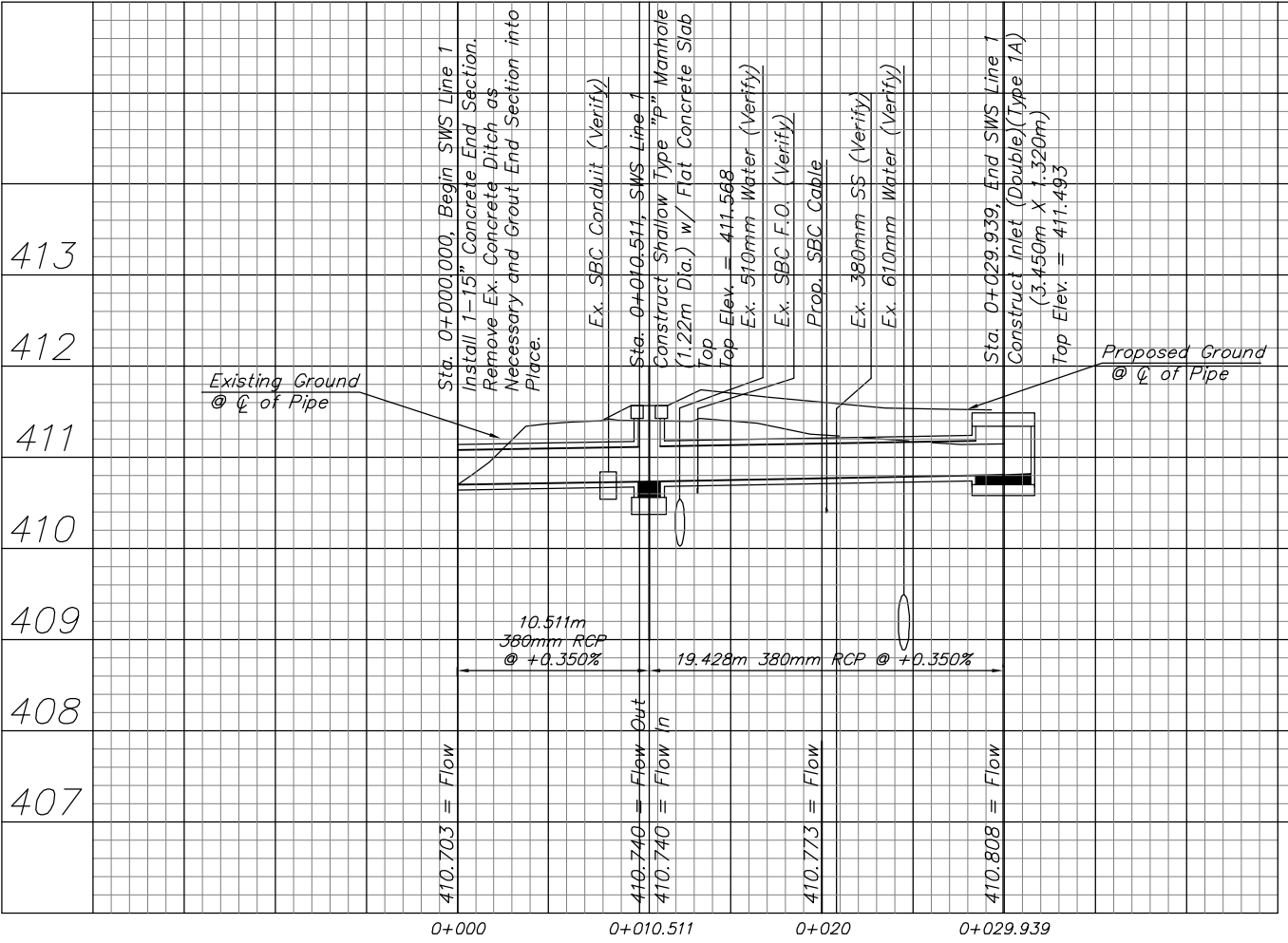
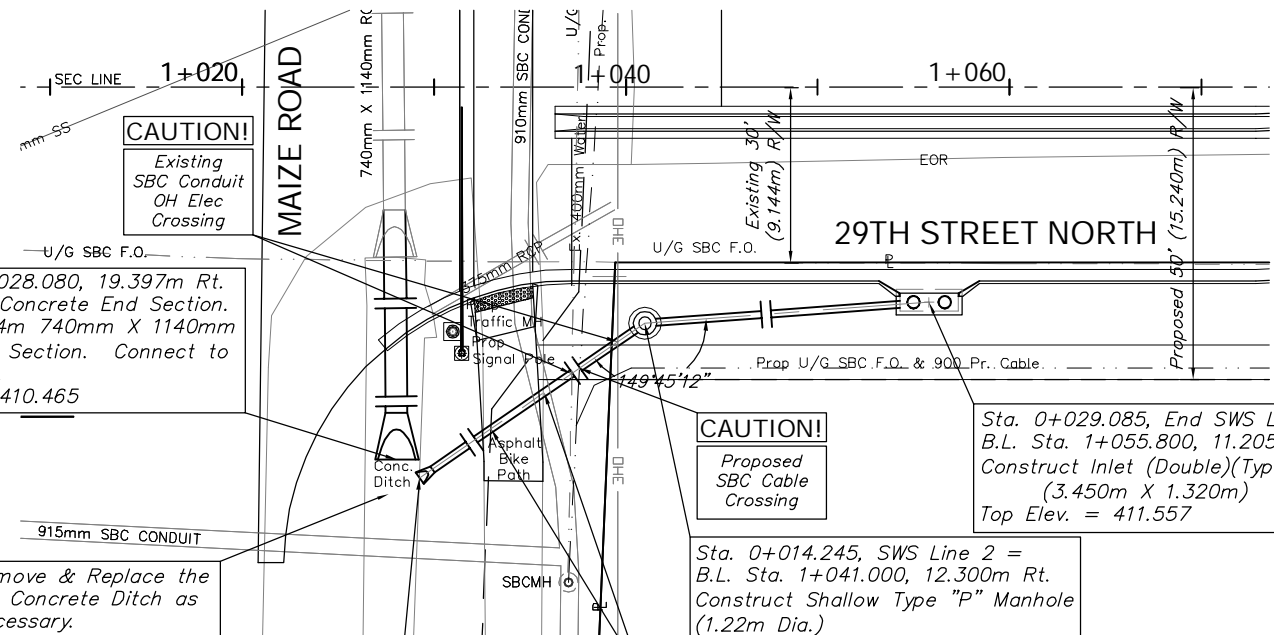
Sta. 0+014.245, SWS Line 2 = B.L. Sta. 1+041.000, 12.300m Rt.
 Construct Shallow Type "P" Manhole (1.22m Dia.)
 Top Elev. = 411.800

CAUTION!
 Existing 400mm Water SBC Conduit Crossing

**WILLIAM R. & JUNE O. PRACHT
 DE-66
 Gov. Lot 4**



SCALE:
 1:200 HORIZONTAL
 1:40 VERTICAL



PROJECT NUMBER 472-83863		SHEET NAME SWS01		ENGINEERING DIRECTORY F:\29th North\Earth\dwg	
DESIGN TPV	DRAWN TPV	APPROVED JFB	DATE Oct. 2004	SCALE Noted	BAUGHMAN NO 02-02-E232

CAPITAL IMPROVEMENT PROJECT
29TH ST. NORTH SWS PLAN & PROFILE
 SWS LINES 1 & 2

BAUGHMAN COMPANY, P.A.
 ENGINEERING, SURVEYING, & PLANNING
 316-262-7271 • 315 ELLIS • WICHITA, KANSAS 67211