

BENCHMARK:
BM #3 - Small RR Spike in the South Face of the 4th Power Pole East of Maize Road on the North Side of 29th Street North.
Sta. 1+205.18, 14.69m Lt.
Elev. 412.090 SI Units (1352.00 MSL)

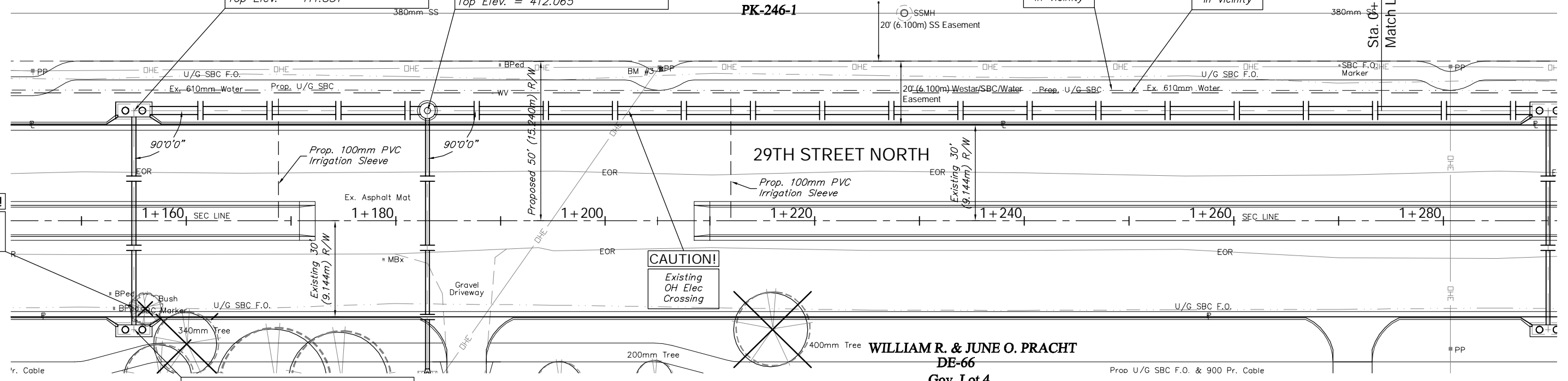
Sta. 0+020.890, SWS Line 3 =
B.L. Sta. 1+155.000, 10.520m Lt.
Construct Inlet (Double)(Type 1A)
(3.450m X 1.630m)
Top Elev. = 411.831

Sta. 0+048.917, SWS Line 3 =
Sta. 0+000.000, SWS Line 3a =
B.L. Sta. 1+183.027, 10.520m Lt.
Construct Shallow Type "P" Manhole
(1.52m Dia.)
Top Elev. = 412.065

**LEO M. & VIVIAN L. RINK
REVOCABLE TRUST
PK-246-1**

CAUTION!
Proposed SBC Cable in Vicinity

CAUTION!
Existing 610mm Water in Vicinity



Sta. 0+000.000, Begin SWS Line 3 =
B.L. Sta. 1+155.000, 10.370m Rt.
Construct Inlet (Double)(Type 1A)
(3.450m X 1.320m)
Top Elev. = 411.831

**WILLIAM R. & JUNE O. PRACHT
DE-66
Gov. Lot 4**

KDOT METRIC

