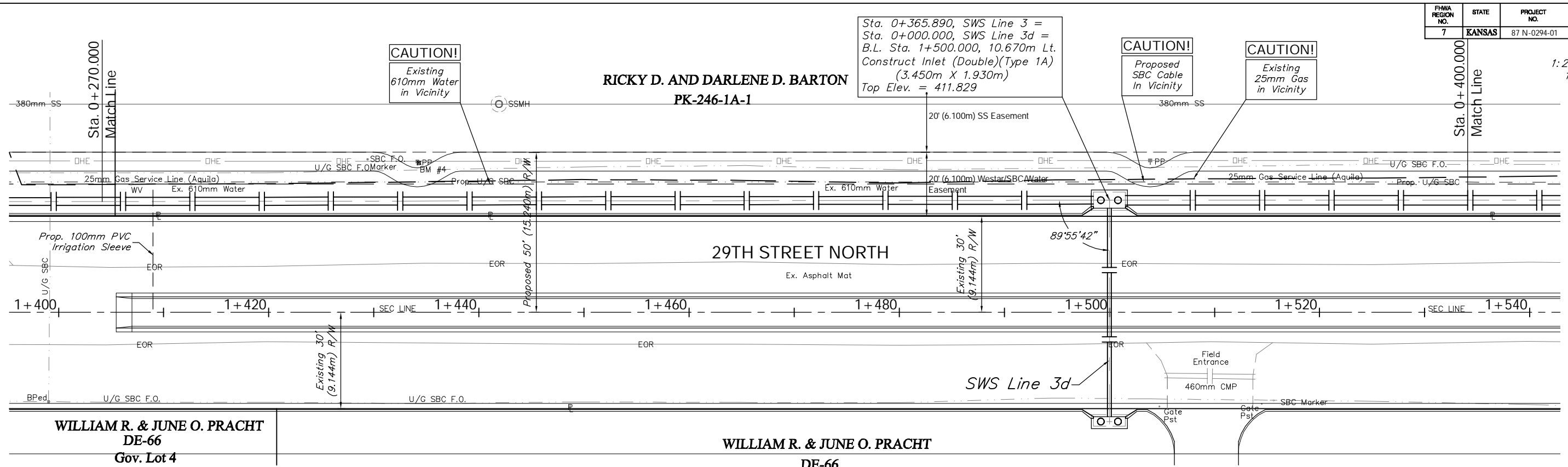
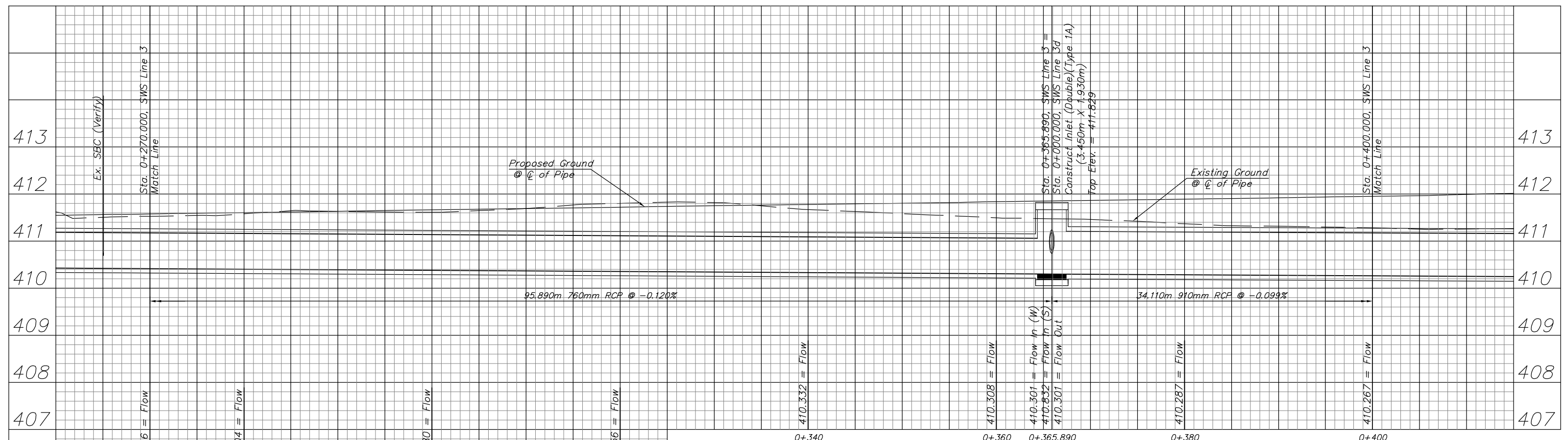


FHWA REGION NO.	STATE	PROJECT NO.	FISCAL YEAR	SHEET NO.	TOTAL SHEETS
7	KANSAS	87 N-0294-01	2004	34	129

SCALE:
1:200 HORIZONTAL
1:40 VERTICAL



BENCHMARK:
 BM #4 - 1/2" Rebar in the South Face of the 8th Power Pole East of Maize Road on the North Side of 29th Street North.
 Sta. 1+434.14, 14.36m Lt.
 Elev. 412.013 SI Units (1351.75 MSL)



PROJECT NUMBER 472-83863		SHEET NAME SWS04		ENGINEERING DIRECTORY F:\29th North\Earth\dwg	
DESIGN TPV	DRAWN TPV	APPROVED JFB	DATE Oct. 2004	SCALE Noted	BAUGHMAN NO 02-02-E232

29TH ST. NORTH SWS PLAN & PROFILE
 SWS LINE 3 - Sta. 0+270.000 to Sta. 0+400.000

BAUGHMAN COMPANY, P.A.
 ENGINEERING, SURVEYING, & PLANNING
 316-262-7271 • 315 ELLIS • WICHITA, KANSAS 67211

SHEET
OF
34
129