

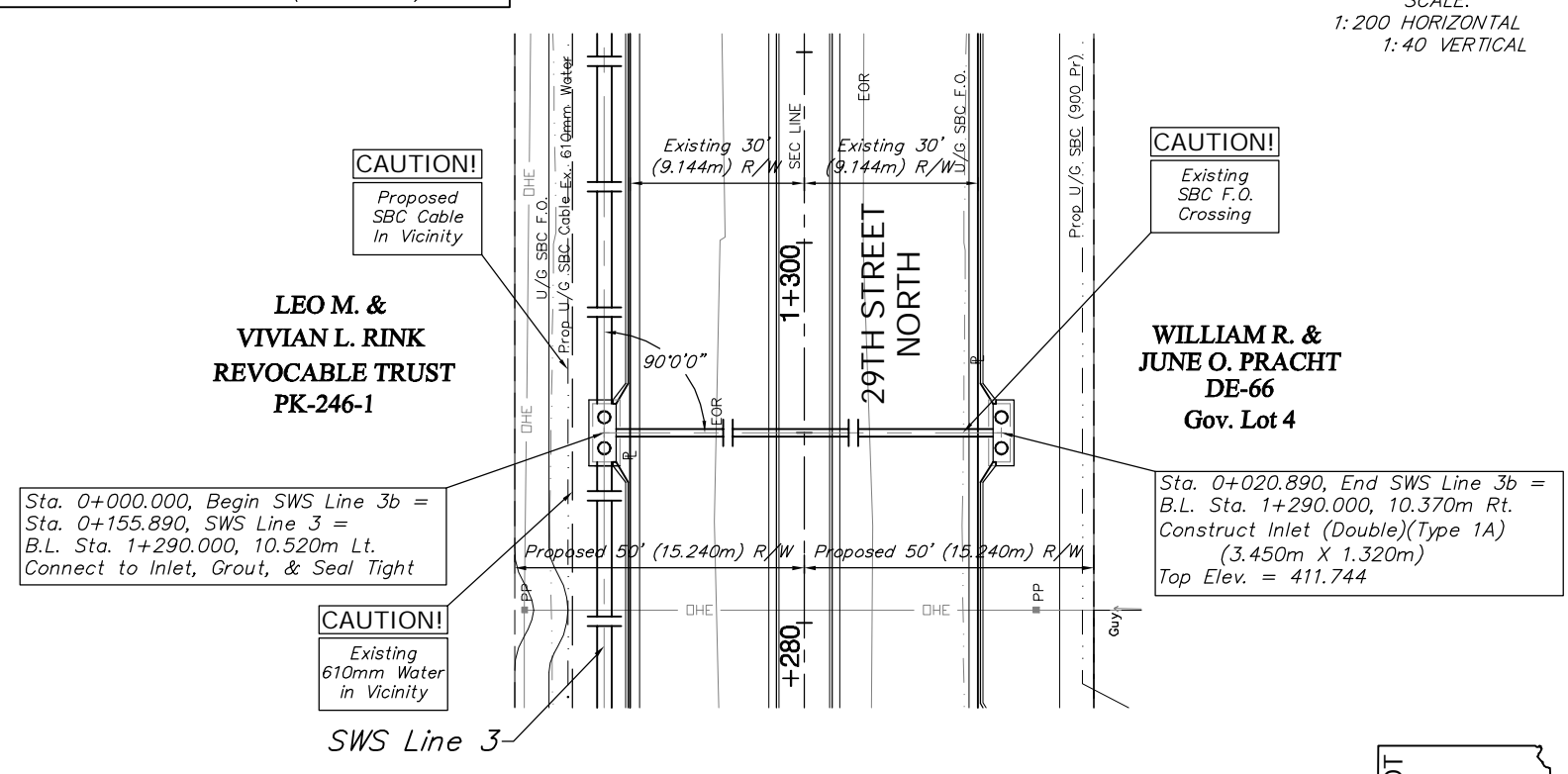
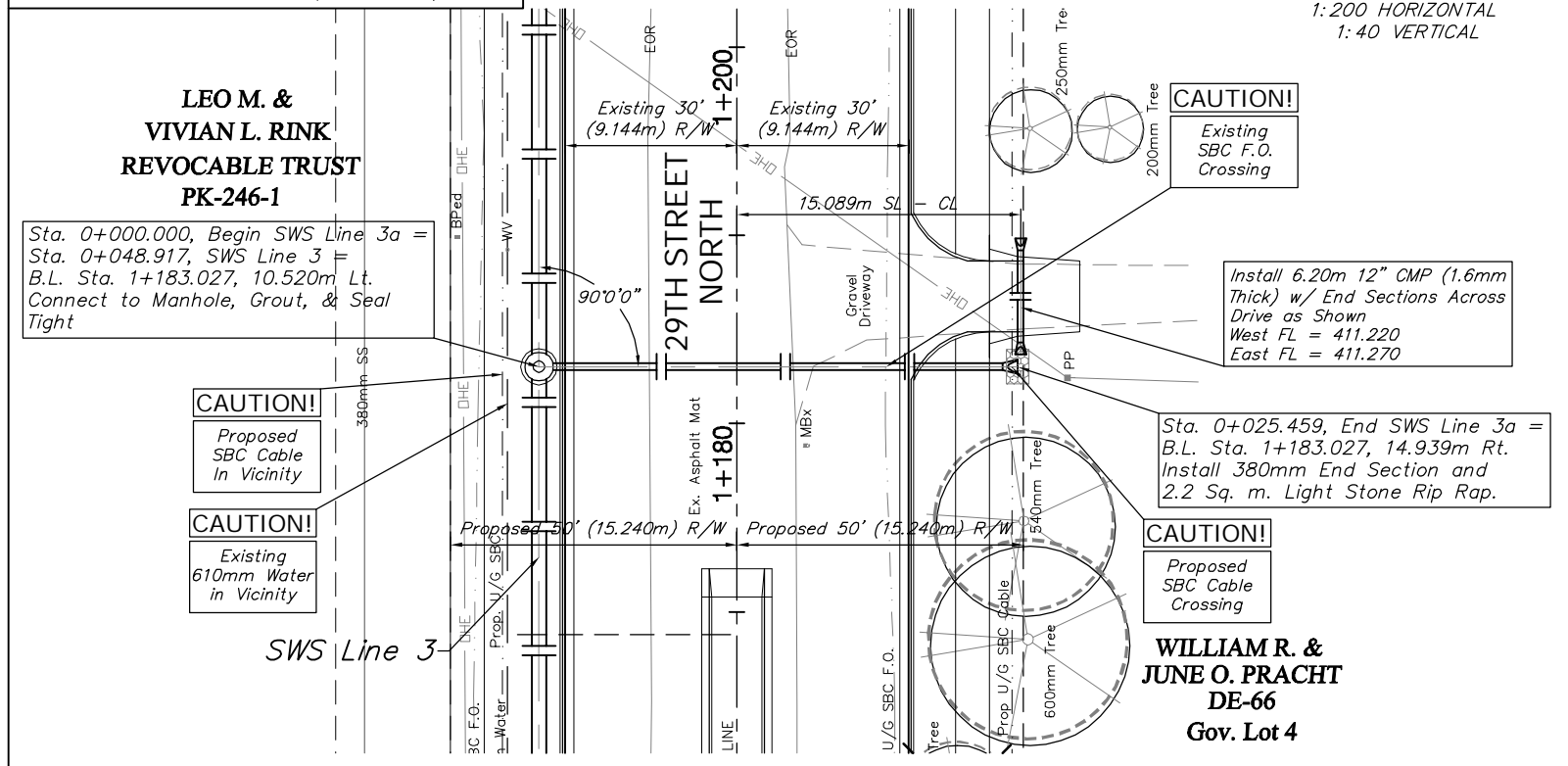
FHWA REGION NO.	STATE	PROJECT NO.	FISCAL YEAR	SHEET NO.	TOTAL SHEETS
7	KANSAS	87 N-0294-01	2004	36	129

SCALE:
1:200 HORIZONTAL
1:40 VERTICAL

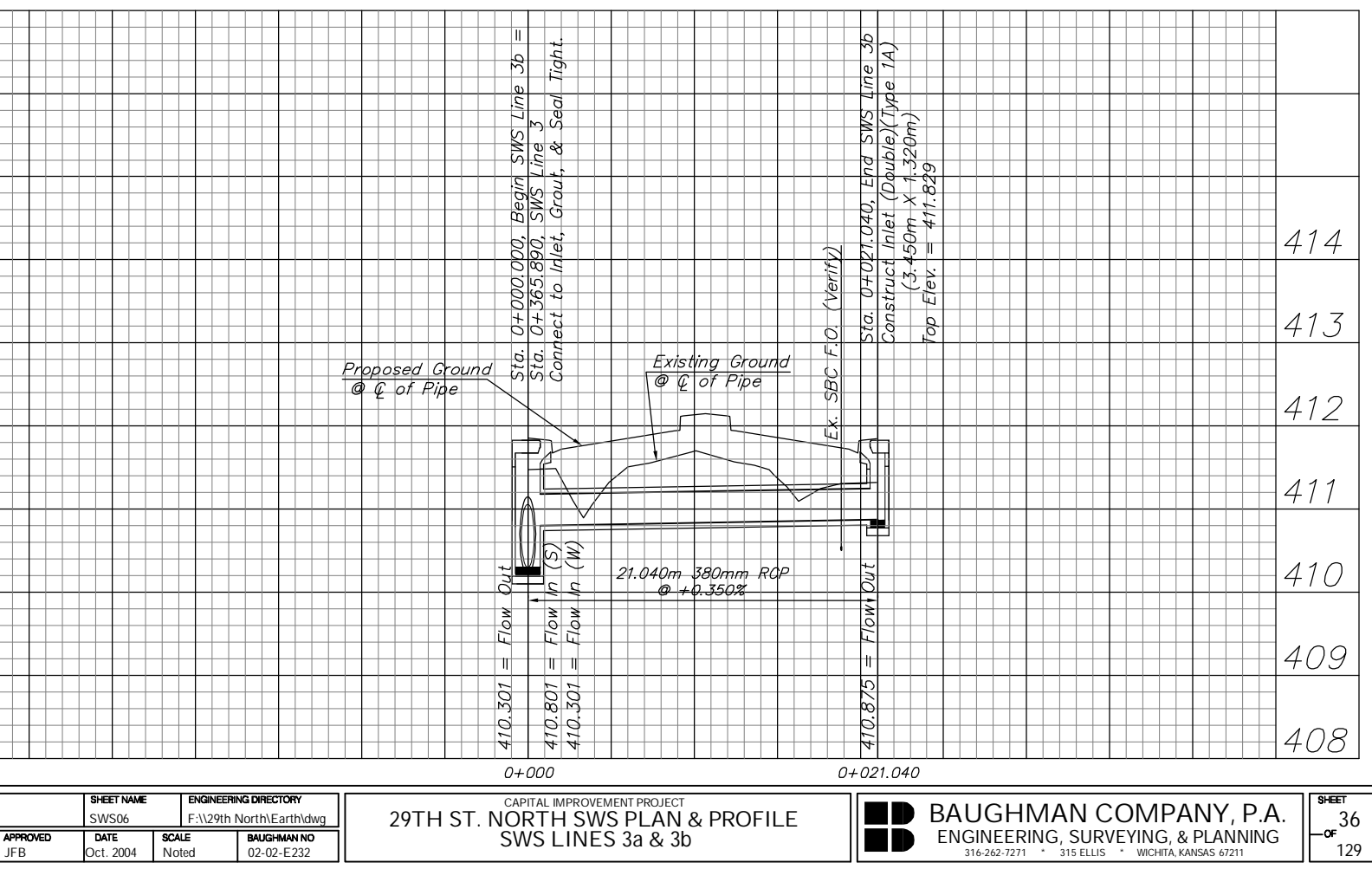
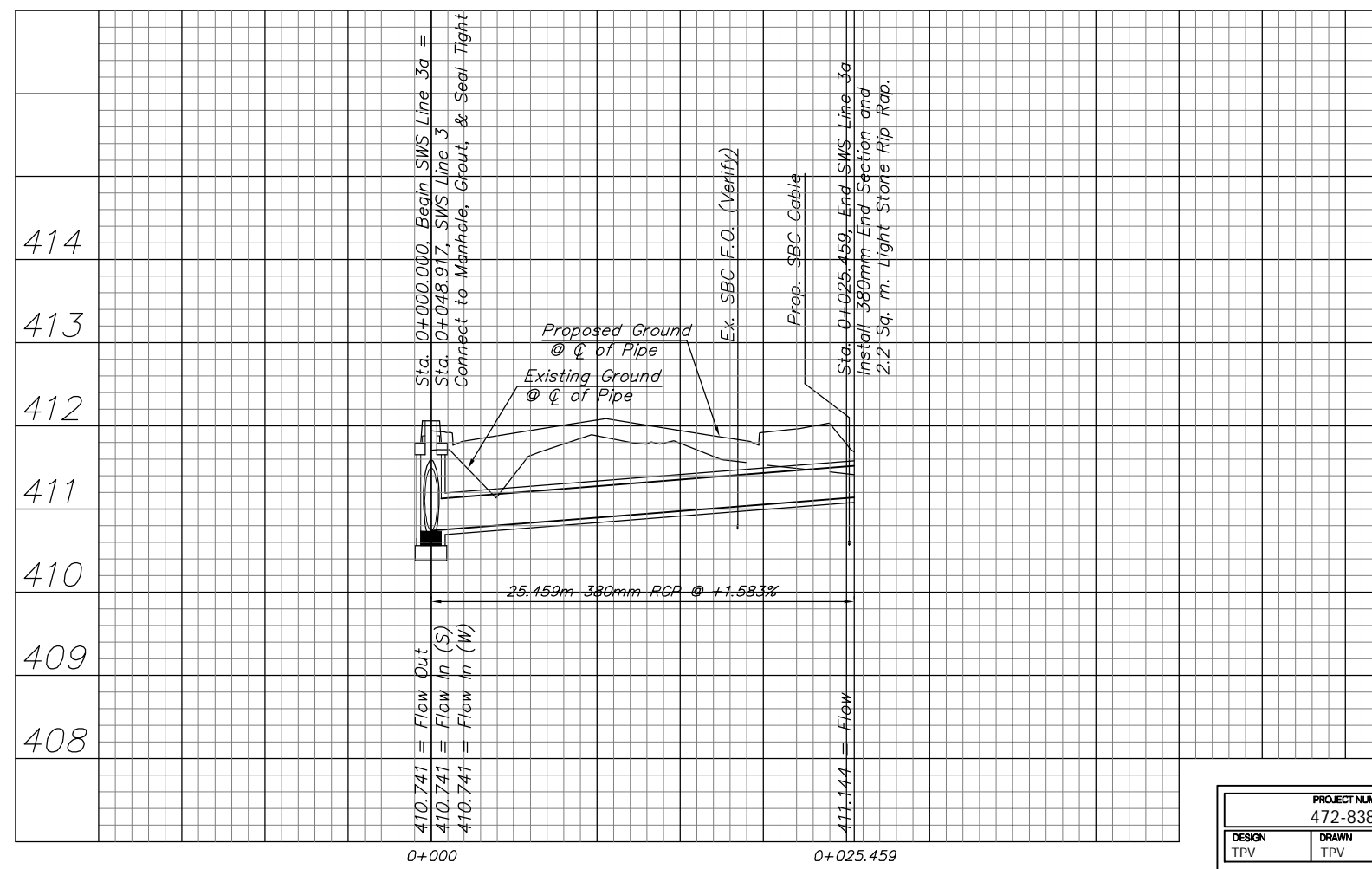
BENCHMARK:
BM #3 - Small RR Spike in the South Face of the 4th Power Pole East of Maize Road on the North Side of 29th Street North.
Sta. 1+205.18, 14.69m Lt.
Elev. 412.090 SI Units (1352.00 MSL)

BENCHMARK:
BM #3 - Small RR Spike in the South Face of the 4th Power Pole East of Maize Road on the North Side of 29th Street North.
Sta. 1+205.18, 14.69m Lt.
Elev. 412.090 SI Units (1352.00 MSL)

SCALE:
1:200 HORIZONTAL
1:40 VERTICAL



KDOT METRIC



PROJECT NUMBER 472-83863		SHEET NAME SWS06		ENGINEERING DIRECTORY F:\29th North\Earth\dwg	
DESIGN TPV	DRAWN TPV	APPROVED JFB	DATE Oct. 2004	SCALE Noted	BAUGHMAN NO 02-02-E232

CAPITAL IMPROVEMENT PROJECT
29TH ST. NORTH SWS PLAN & PROFILE
SWS LINES 3a & 3b

BAUGHMAN COMPANY, P.A.
ENGINEERING, SURVEYING, & PLANNING
316-262-7271 • 315 ELLIS • WICHITA, KANSAS 67211

SHEET
36
OF
129