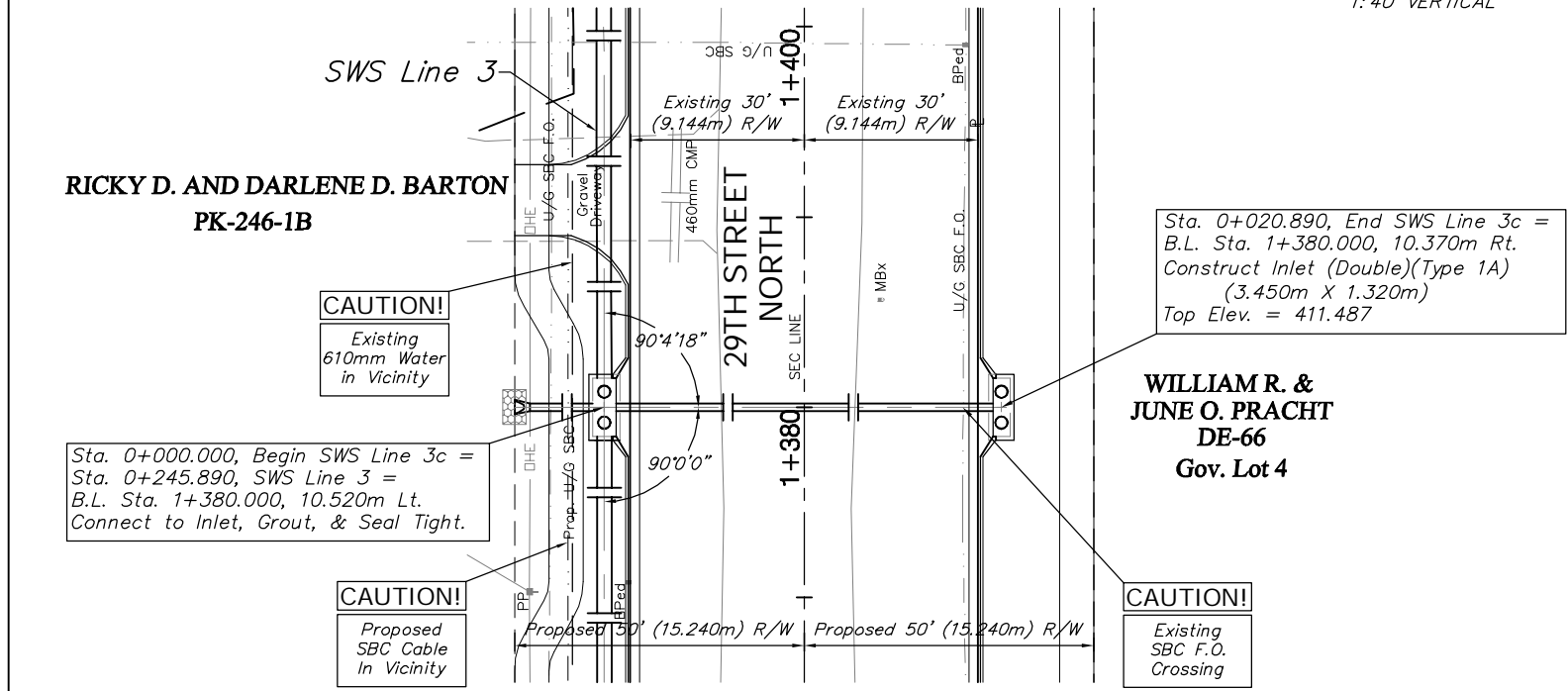
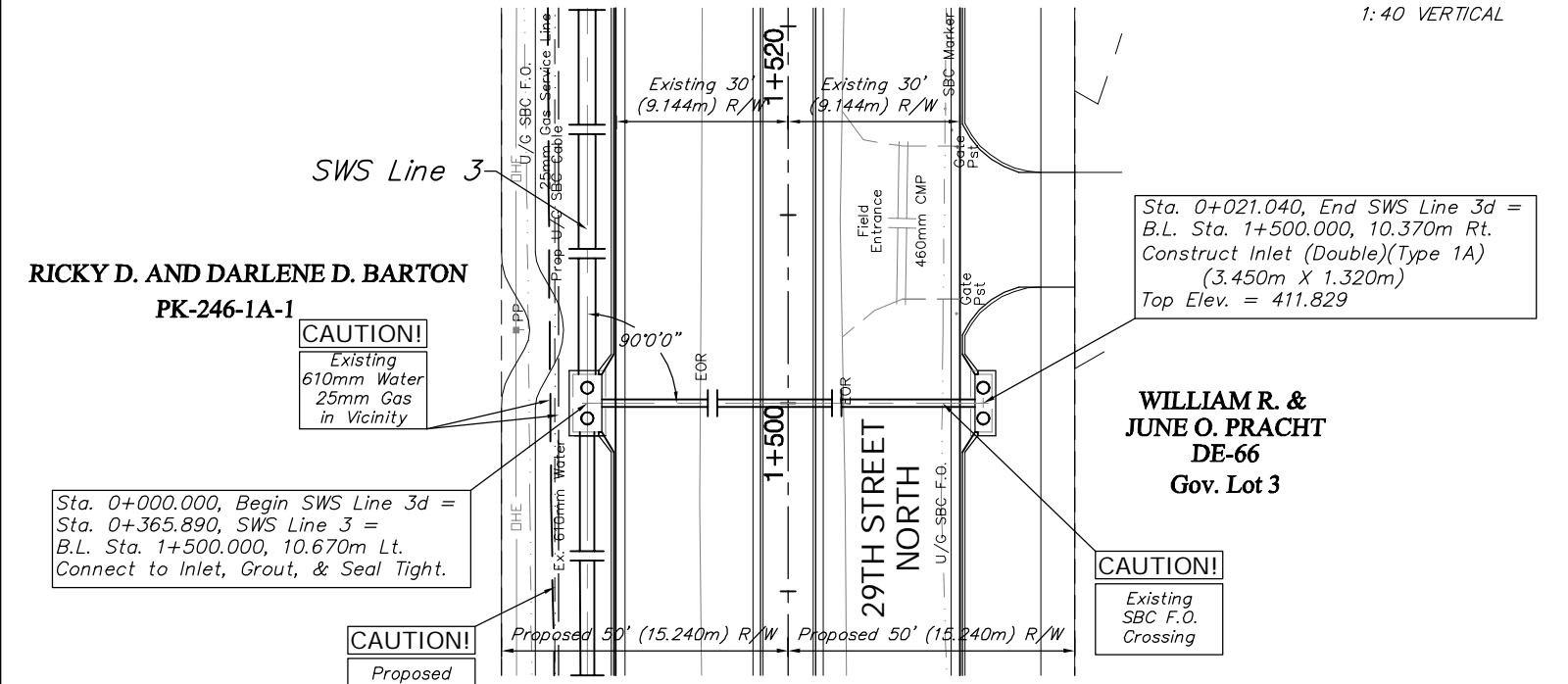


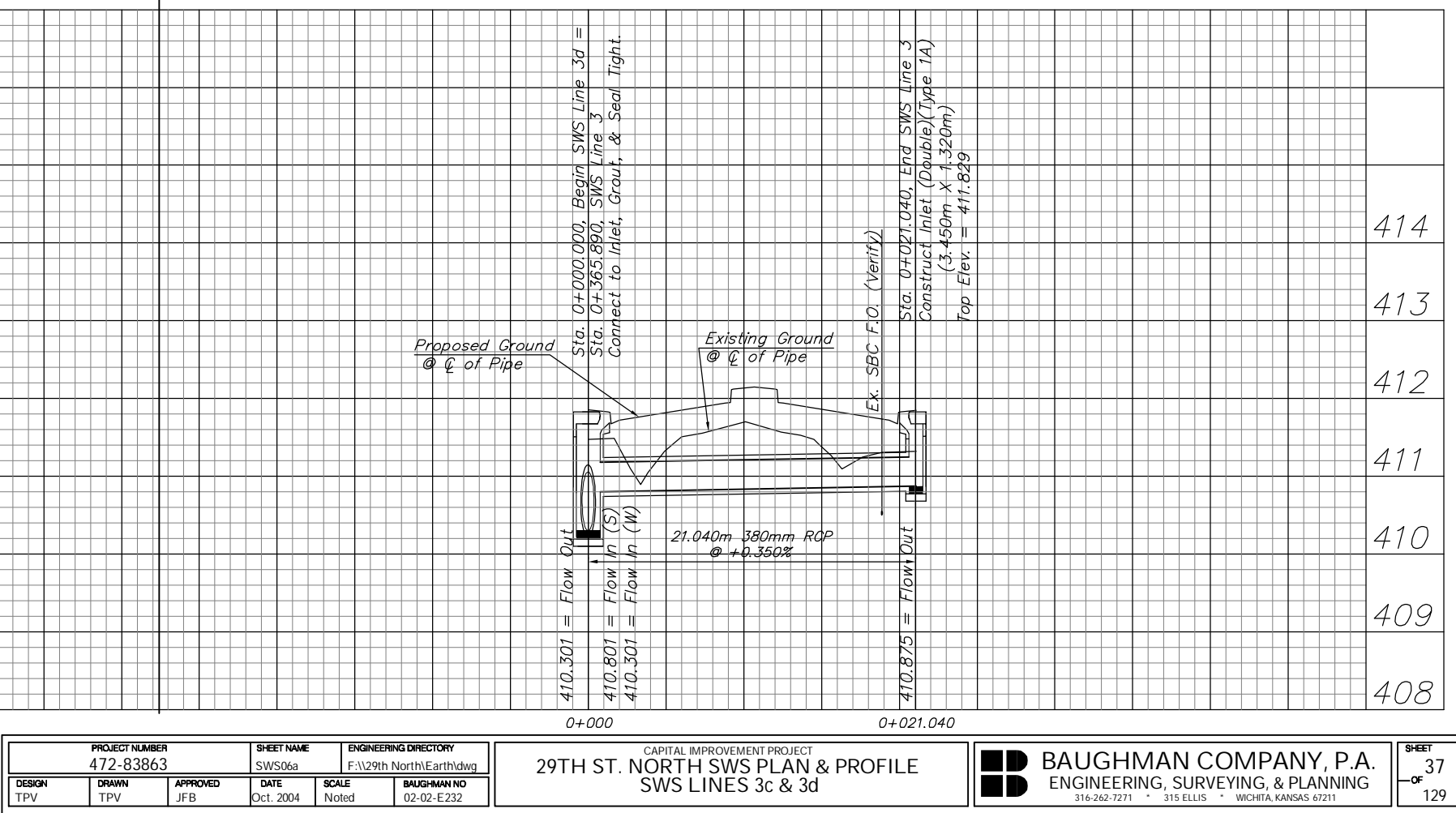
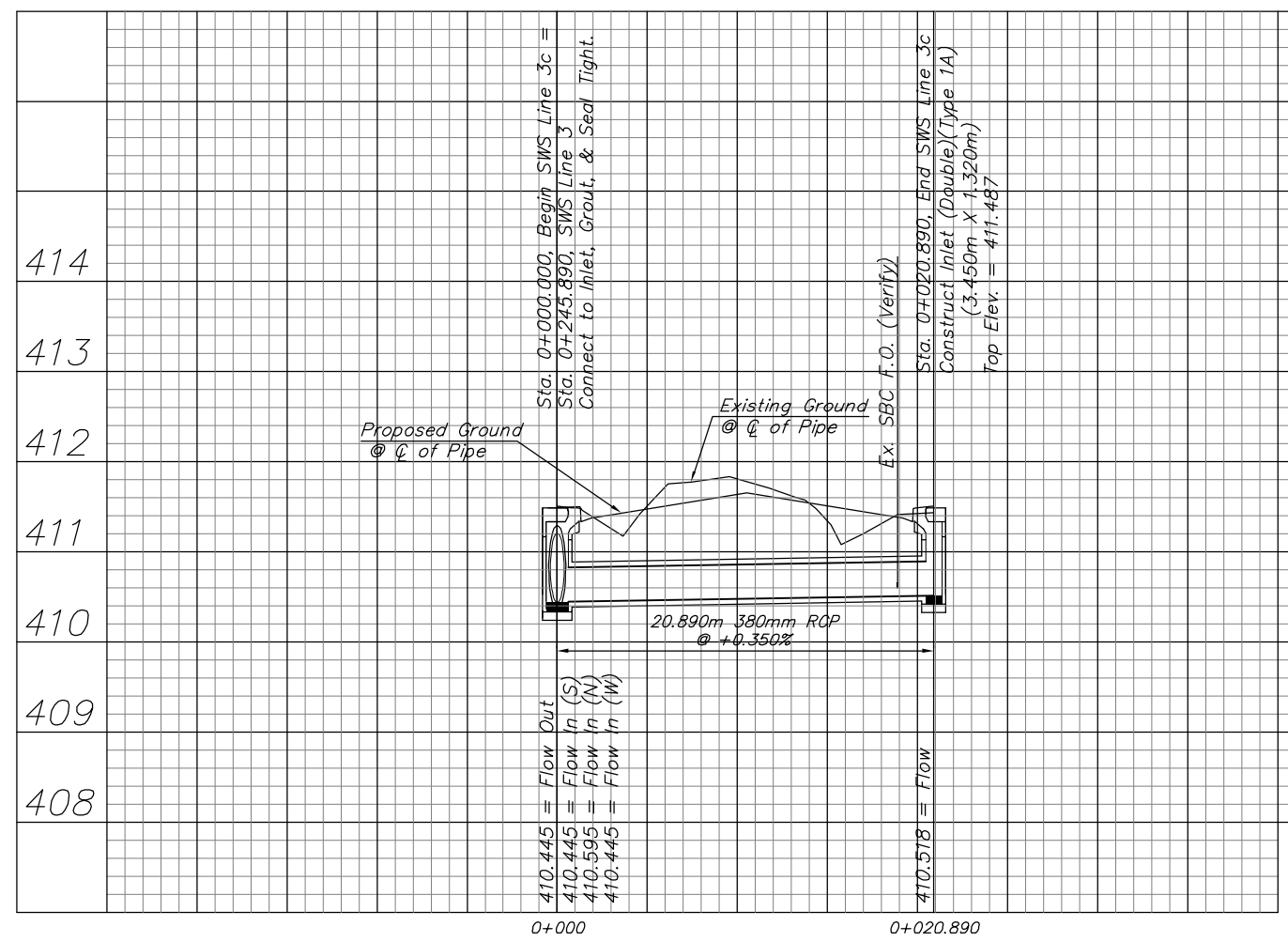
BENCHMARK:  
 BM #4 - 1/2" Rebar in the South Face of the 8th Power Pole East of Maize Road on the North Side of 29th Street North.  
 Sta. 1+434.14, 14.36m Lt.  
 Elev. 412.013 SI Units (1351.75 MSL)



BENCHMARK:  
 BM #4 - 1/2" Rebar in the South Face of the 8th Power Pole East of Maize Road on the North Side of 29th Street North.  
 Sta. 1+434.14, 14.36m Lt.  
 Elev. 412.013 SI Units (1351.75 MSL)



KDOT METRIC



|                             |              |                      |                   |  |                           |
|-----------------------------|--------------|----------------------|-------------------|--|---------------------------|
| PROJECT NUMBER<br>472-83863 |              | SHEET NAME<br>SWS06a |                   | ENGINEERING DIRECTORY<br>F:\29th North\Earth\dwg |                           |
| DESIGN<br>TPV               | DRAWN<br>TPV | APPROVED<br>JFB      | DATE<br>Oct. 2004 | SCALE<br>Noted                                   | BAUGHMAN NO<br>02-02-E232 |

CAPITAL IMPROVEMENT PROJECT  
 29TH ST. NORTH SWS PLAN & PROFILE  
 SWS LINES 3c & 3d

**BAUGHMAN COMPANY, P.A.**  
 ENGINEERING, SURVEYING, & PLANNING  
 316-262-7271 • 315 ELLIS • WICHITA, KANSAS 67211