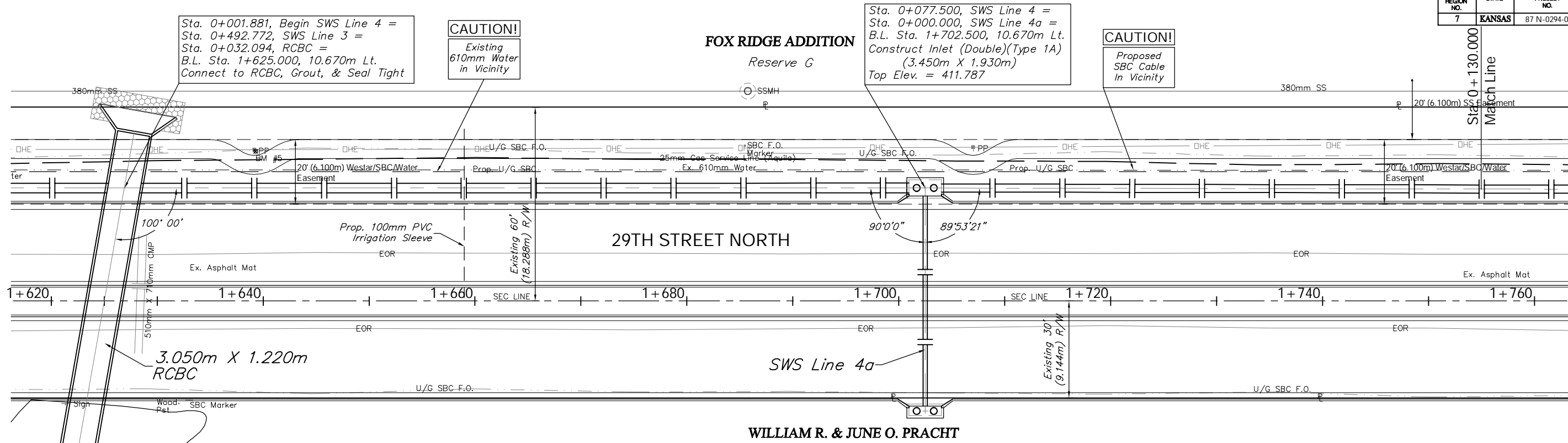


SCALE:
1:200 HORIZONTAL
1:40 VERTICAL



Sta. 0+001.881, Begin SWS Line 4 =
Sta. 0+492.772, SWS Line 3 =
Sta. 0+032.094, RCBC =
B.L. Sta. 1+625.000, 10.670m Lt.
Connect to RCBC, Grout, & Seal Tight

CAUTION!
Existing
610mm Water
in Vicinity

Sta. 0+077.500, SWS Line 4 =
Sta. 0+000.000, SWS Line 4a =
B.L. Sta. 1+702.500, 10.670m Lt.
Construct Inlet (Double)(Type 1A)
(3.450m X 1.930m)
Top Elev. = 411.787

CAUTION!
Proposed
SBC Cable
In Vicinity

Sta. 0+130.000
Match Line

BENCHMARK:
BM #5 - 80d Spike in the South Face of the 11th Power Pole East (3/8 mile) of Maize Road on the North Side of 29th Street North.
Sta. 1+639.15, 14.28m Lt.
Elev. 410.880 SI Units (1348.03 MSL)

