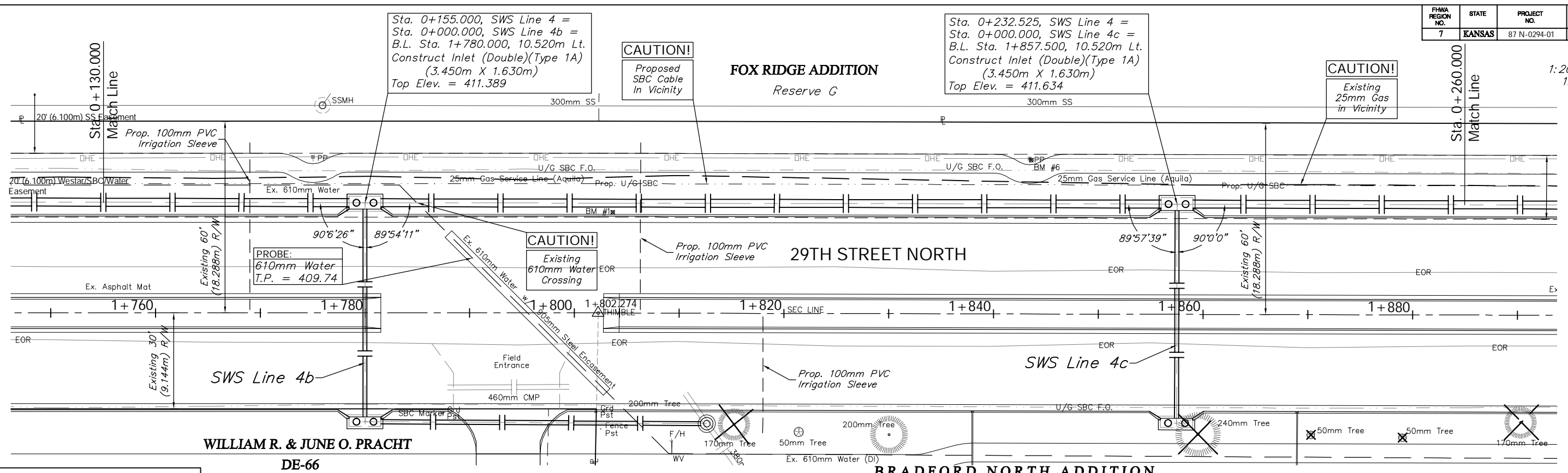


SCALE:
1:200 HORIZONTAL
1:40 VERTICAL

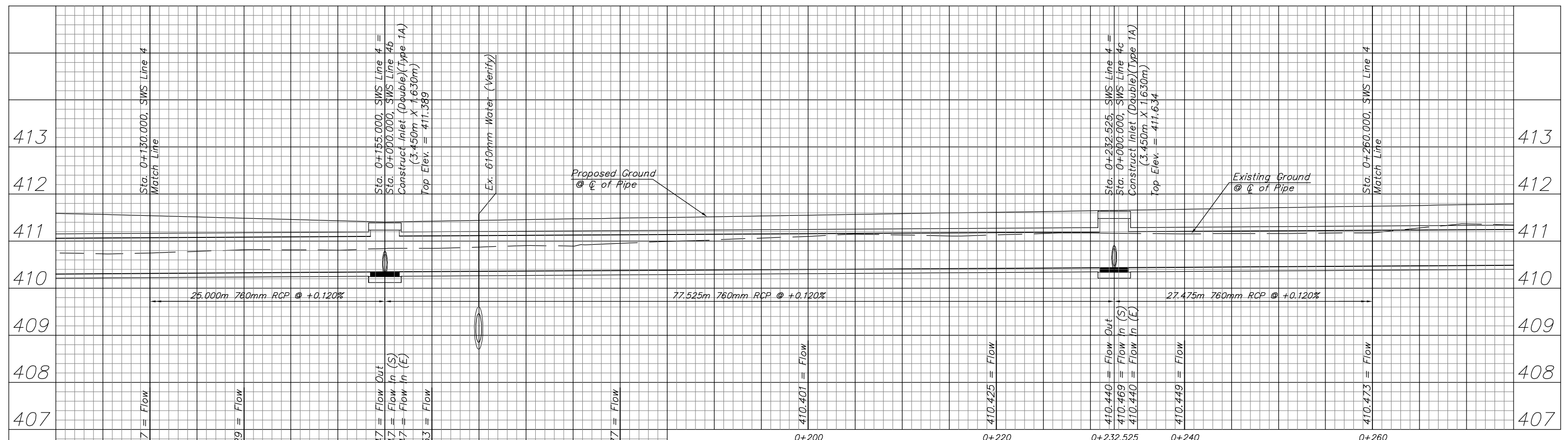


BENCHMARK:
BM #6 - RR Spike in the South Face of the 3rd Power Pole West of Keith on the North Side of 29th Street North.
Sta. 1+843.42, 14.83m Lt.
Elev. 411.379 SI Units (1349.67 MSL)

DE-66
Gov. Lot 3

BRADFORD NORTH ADDITION

KDOT METRIC



PROJECT NUMBER 472-83863		SHEET NAME SWS08		ENGINEERING DIRECTORY F:\29th North\Earth\dwg	
DESIGN TPV	DRAWN TPV	APPROVED JFB	DATE Oct. 2004	SCALE Noted	BAUGHMAN NO 02-02-E232

CAPITAL IMPROVEMENT PROJECT
29TH ST. NORTH SWS PLAN & PROFILE
SWS LINE 4 - Sta. 0+130.000 to Sta. 0+260.000

BAUGHMAN COMPANY, P.A.	SHEET 39
ENGINEERING, SURVEYING, & PLANNING	OF 129
316-262-7271 • 315 ELLIS • WICHITA, KANSAS 67211	