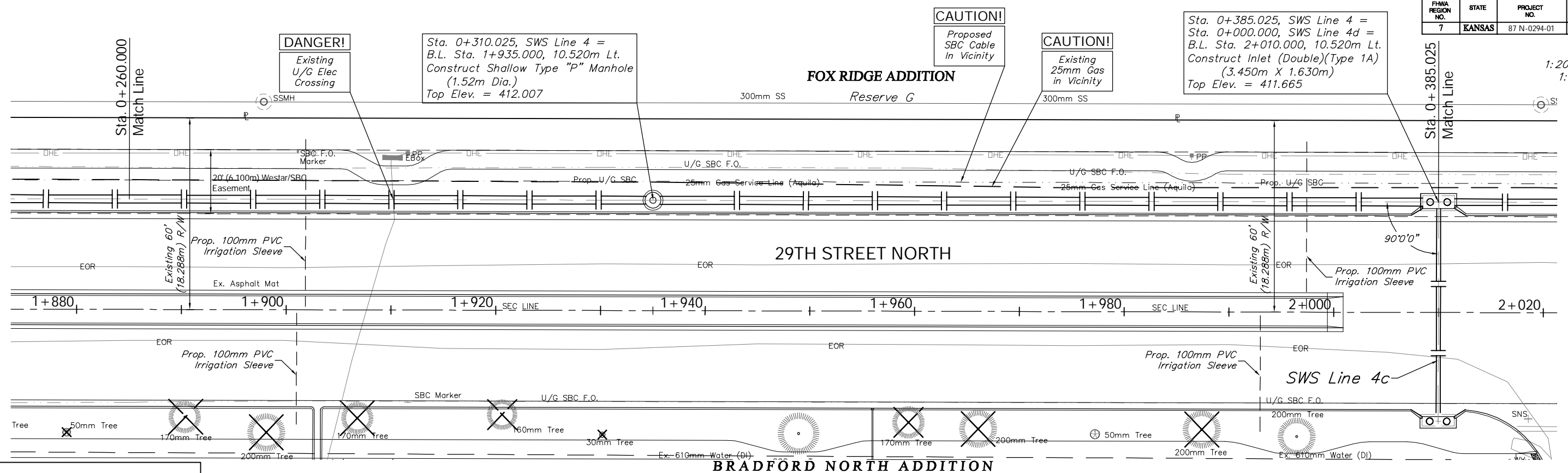


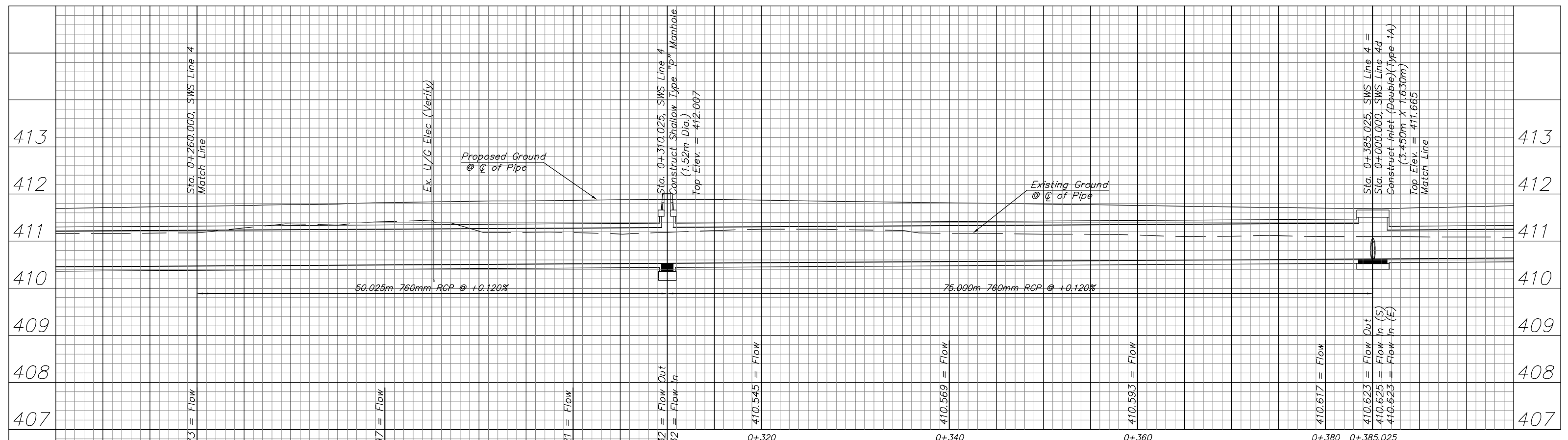
FHWA REGION NO.	STATE	PROJECT NO.	FISCAL YEAR	SHEET NO.	TOTAL SHEETS
7	KANSAS	87 N-0294-01	2004	40	129

SCALE:  
1:200 HORIZONTAL  
1:40 VERTICAL



**BENCHMARK:**  
BM #6 - RR Spike in the South Face of the 3rd Power Pole West of Keith on the North Side of 29th Street North.  
Sta. 1+843.42, 14.83m Lt.  
Elev. 411.379 SI Units (1349.67 MSL)

KDOT METRIC



PROJECT NUMBER 472-83863		SHEET NAME SWS09		ENGINEERING DIRECTORY F:\29th North\Earth\dwg	
DESIGN TPV	DRAWN TPV	APPROVED JFB	DATE Oct. 2004	SCALE Noted	BAUGHMAN NO 02-02-E232

CAPITAL IMPROVEMENT PROJECT  
**29TH ST. NORTH SWS PLAN & PROFILE**  
SWS LINE 4 - Sta. 0+260.000 to Sta. 0+386.306

**BAUGHMAN COMPANY, P.A.**  
ENGINEERING, SURVEYING, & PLANNING  
316-262-7271 • 315 ELLIS • WICHITA, KANSAS 67211

SHEET  
OF  
40  
129