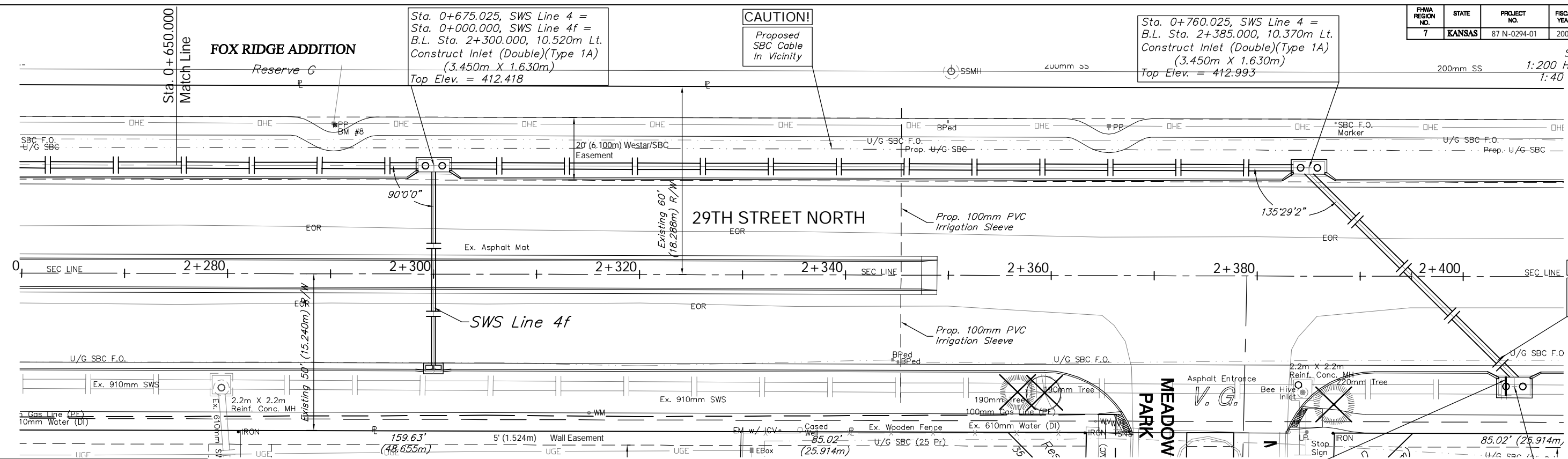


FHWA REGION NO.	STATE	PROJECT NO.	FISCAL YEAR	SHEET NO.	TOTAL SHEETS
7	KANSAS	87 N-0294-01	2004	43	129

SCALE:
1:200 HORIZONTAL
1:40 VERTICAL



CAUTION!
Existing SBC F.O. Crossing

BENCHMARK:
BM #8 - Small RR Spike in the South Face of the 2nd Power Pole West of Meadow Park on the North Side of 29th Street North.
Sta. 2+290.26, 14.61m Lt.
Elev. 412.352 SI Units (1352.86 MSL)

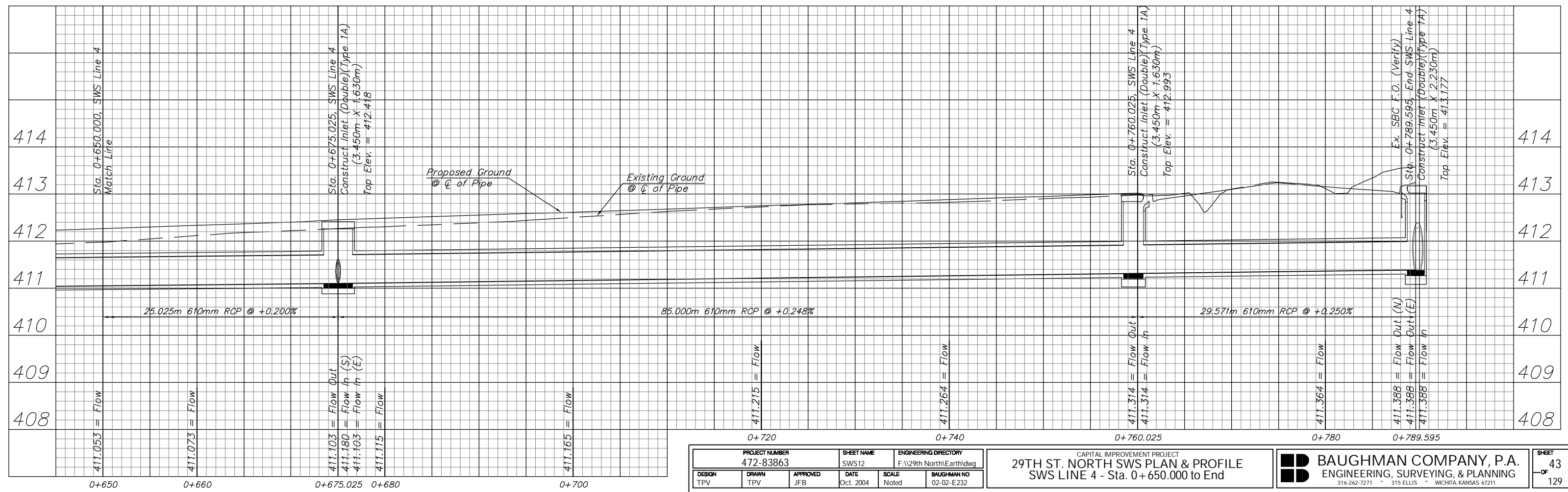
BRADFORD NORTH 3RD ADDITION

Existing RCP alignment shown here is not field verified, but based on the best information available for design. The Contractor is advised the blockouts and/or proposed structure configurations may differ slightly than that shown, and that the actual pipe alignment should be verified **PRIOR** to ordering pre-cast structures.

Divert Flow Into Proposed 610mm RCP by Shaping the Invert to an Elevation of 411.69. Cost to be **SUBSIDIARY** to the Installation of the Inlet.

Sta. 0+789.595, End SWS Line 4 = B.L. Sta. 2+405.000, 10.668m Rt.
Construct Inlet (Double)(Type 1A) (3.450m X 2.230m)
Top Elev. = 413.177

KDOT METRIC



PROJECT NUMBER 472-83863		SHEET NAME SWS12		ENGINEERING DIRECTORY F:\29th North\Earth\dwg	
DESIGN TPV	DRAWN TPV	APPROVED JFB	DATE Oct. 2004	SCALE Noted	BAUGHMAN NO 02-02-E232

CAPITAL IMPROVEMENT PROJECT
29TH ST. NORTH SWS PLAN & PROFILE
SWS LINE 4 - Sta. 0+650.000 to End

BAUGHMAN COMPANY, P.A.
ENGINEERING, SURVEYING, & PLANNING
316-262-7271 • 315 ELLIS • WICHITA, KANSAS 67211