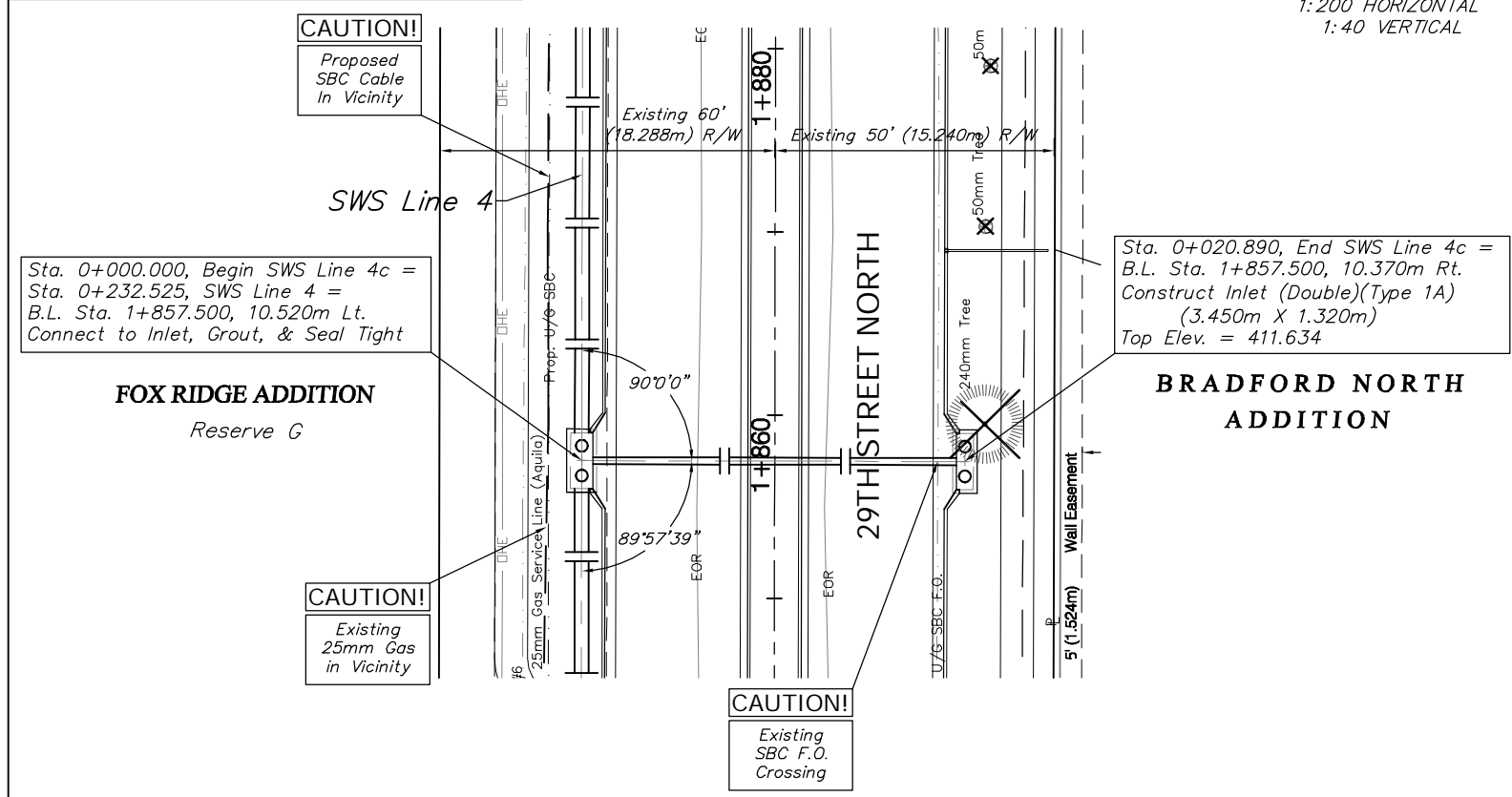
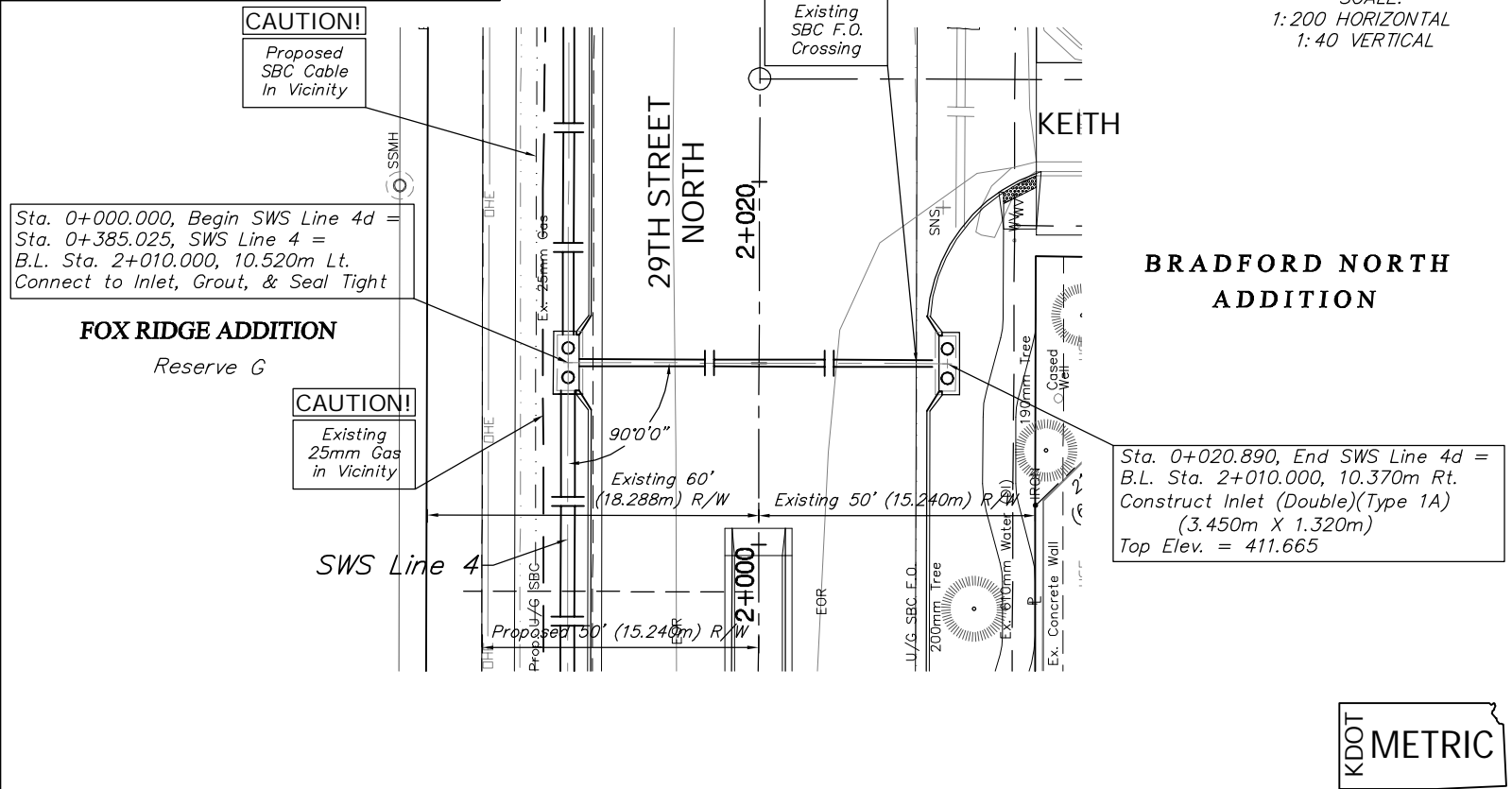
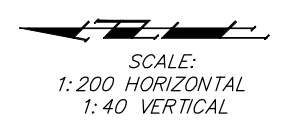


BENCHMARK:
 BM #6 - RR Spike in the South Face of the 3rd Power Pole West of Keith on the North Side of 29th Street North.
 Sta. 1+843.42, 14.83m Lt.
 Elev. 411.379 SI Units (1349.67 MSL)

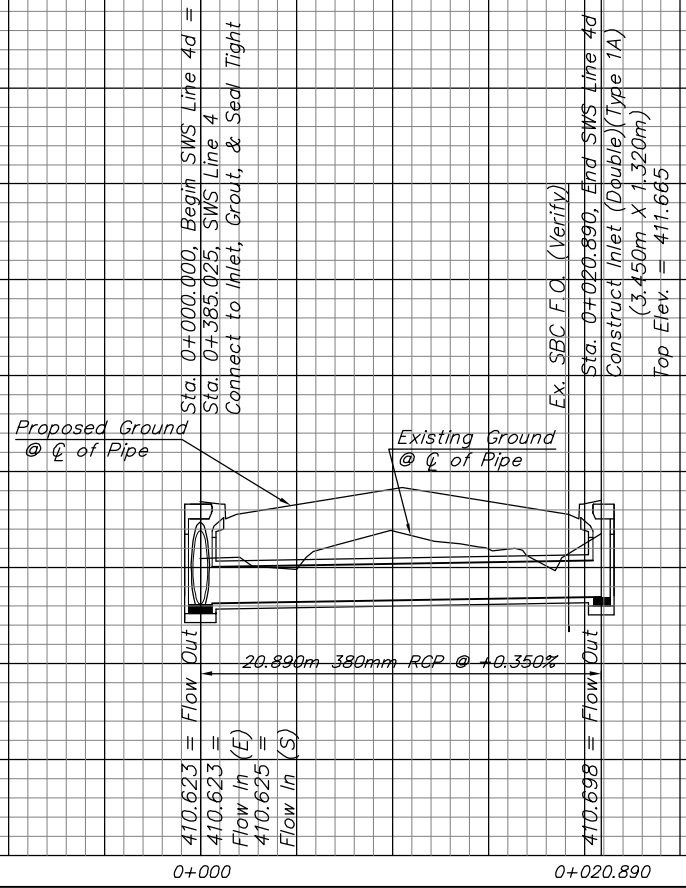
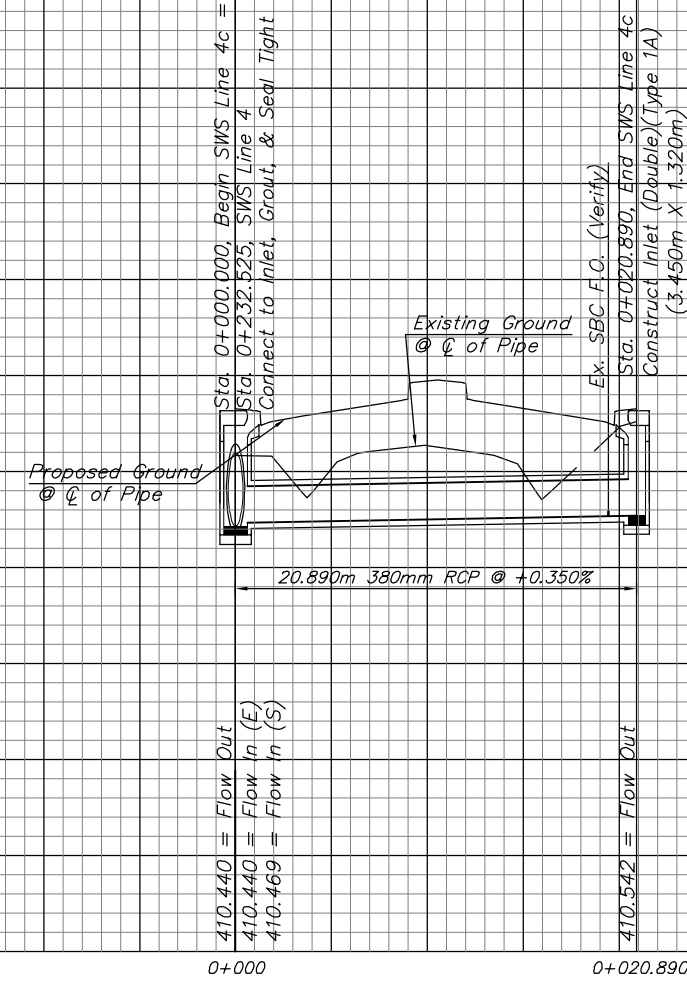


BENCHMARK:
 BM #7 - Small RR Spike in the South Face of the 1st Power Pole East of Keith on the North Side of 29th Street North.
 Sta. 2+063.40, 14.84m Lt.
 Elev. 411.437 SI Units (1349.86 MSL)



KDOT METRIC

413				413	414			414
412				412	413			413
411				411	412			412
410				410	411			411
409				409	410			410
408				408	409			409
407				407	408			408



PROJECT NUMBER 472-83863		SHEET NAME SWS14		ENGINEERING DIRECTORY F:\29th North\Earth\dwg	
DESIGN TPV	DRAWN TPV	APPROVED JFB	DATE Oct. 2004	SCALE Noted	BAUGHMAN NO 02-02-E232

CAPITAL IMPROVEMENT PROJECT
29TH ST. NORTH SWS PLAN & PROFILE
 SWS LINES 4c & 4d

BAUGHMAN COMPANY, P.A.
 ENGINEERING, SURVEYING, & PLANNING
 316-262-7271 • 315 ELLIS • WICHITA, KANSAS 67211

SHEET 45 OF 129