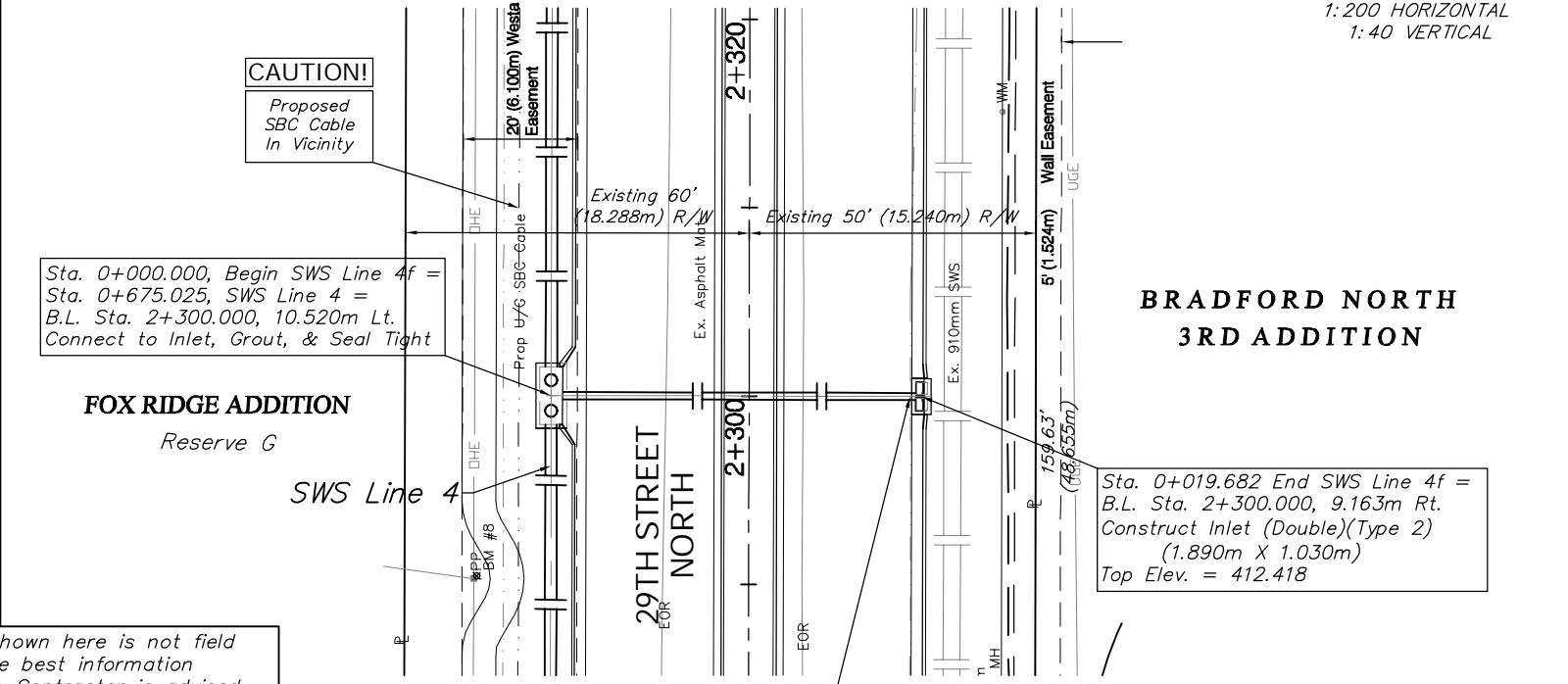
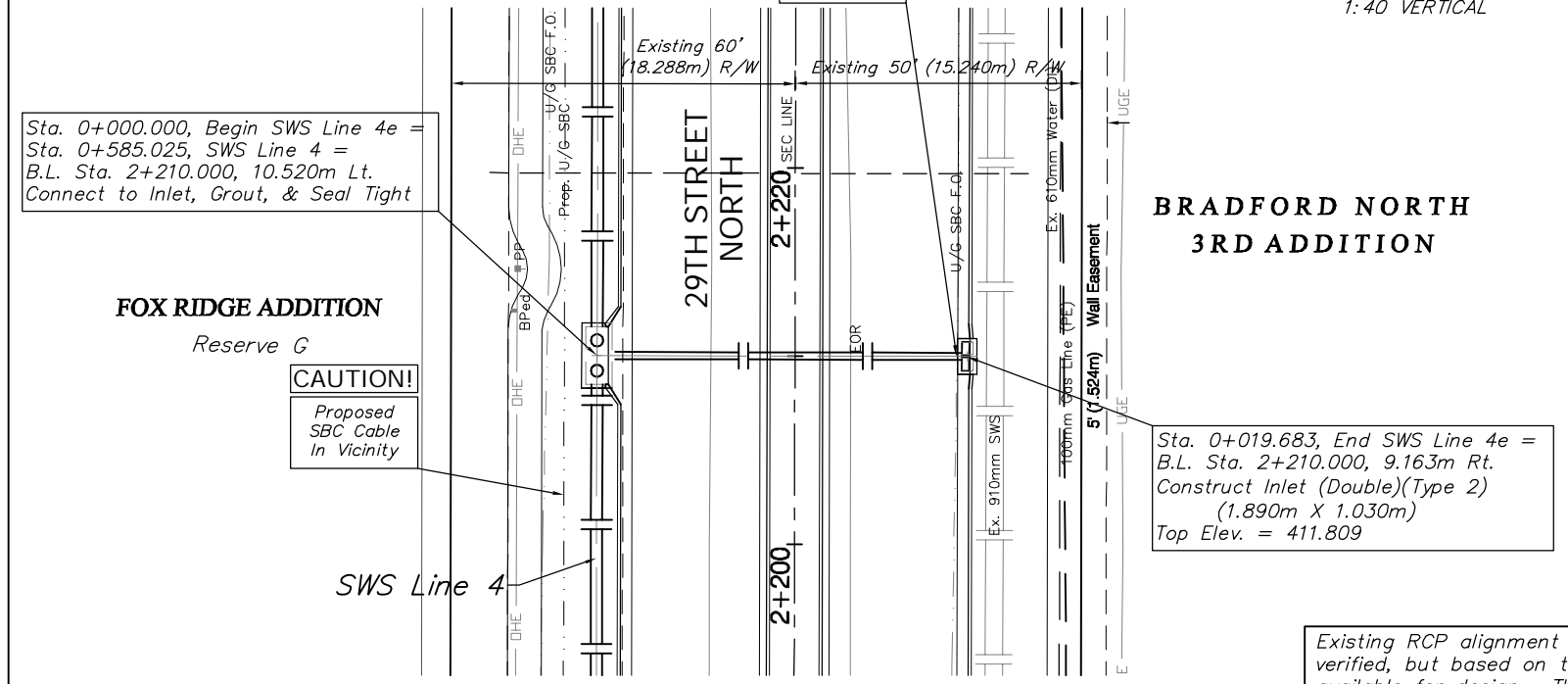


BENCHMARK:
 BM #8 - Small RR Spike in the South Face of the 2nd Power Pole West of Meadow Park on the North Side of 29th Street North.
 Sta. 2+290.26, 14.61m Lt.
 Elev. 412.352 SI Units (1352.86 MSL)

BENCHMARK:
 BM #8 - Small RR Spike in the South Face of the 2nd Power Pole West of Meadow Park on the North Side of 29th Street North.
 Sta. 2+290.26, 14.61m Lt.
 Elev. 412.352 SI Units (1352.86 MSL)

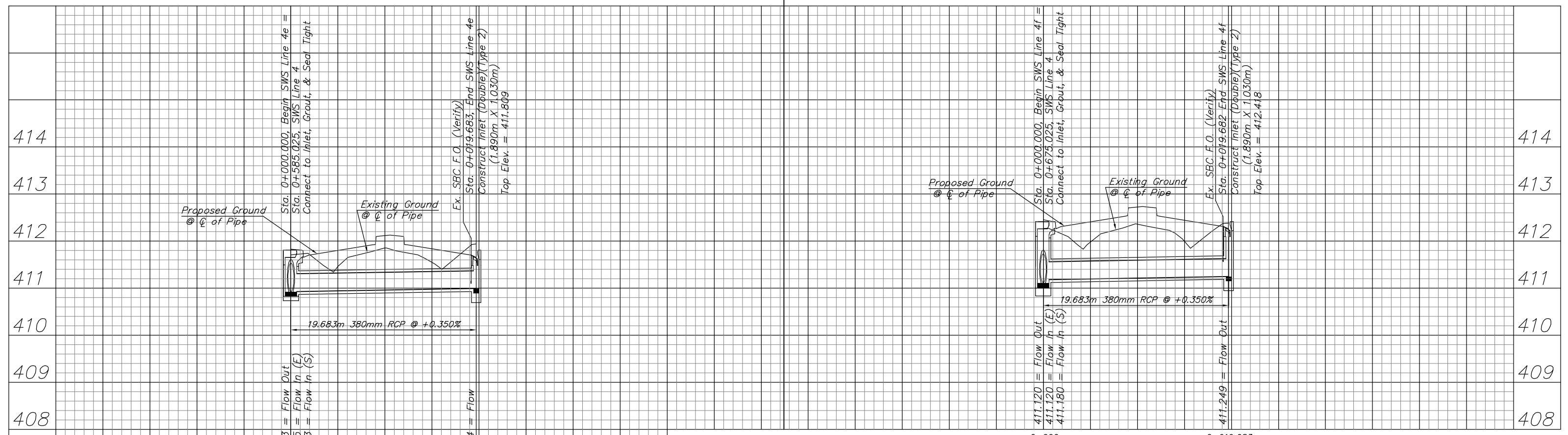


**BRADFORD NORTH
3RD ADDITION**

**BRADFORD NORTH
3RD ADDITION**

Existing RCP alignment shown here is not field verified, but based on the best information available for design. The Contractor is advised the blockouts and/or proposed structure configurations may differ slightly than that shown, and that the actual pipe alignment should be verified PRIOR to ordering pre-cast structures.

KDOT METRIC



PROJECT NUMBER 472-83863		SHEET NAME SWS15		ENGINEERING DIRECTORY F:\29th North\Earth\dwg	
DESIGN TPV	DRAWN TPV	APPROVED JFB	DATE Oct. 2004	SCALE Noted	BAUGHMAN NO 02-02-E232

29TH ST. NORTH SWS PLAN & PROFILE
 SWS LINES 4e & 4f

BAUGHMAN COMPANY, P.A.
 ENGINEERING, SURVEYING, & PLANNING
 316-262-7271 • 315 ELLIS • WICHITA, KANSAS 67211