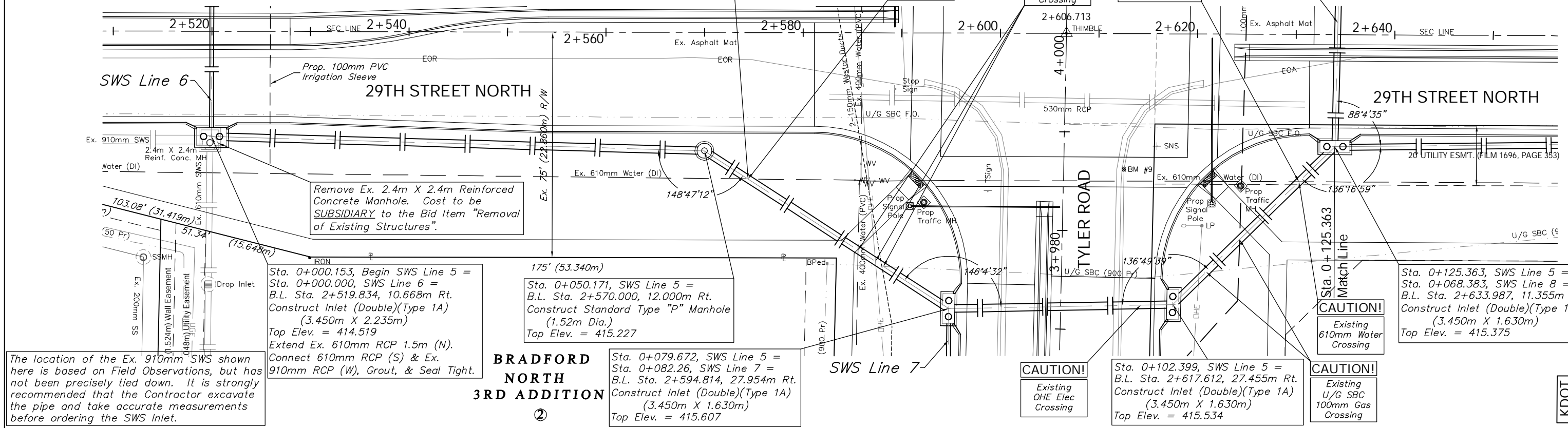
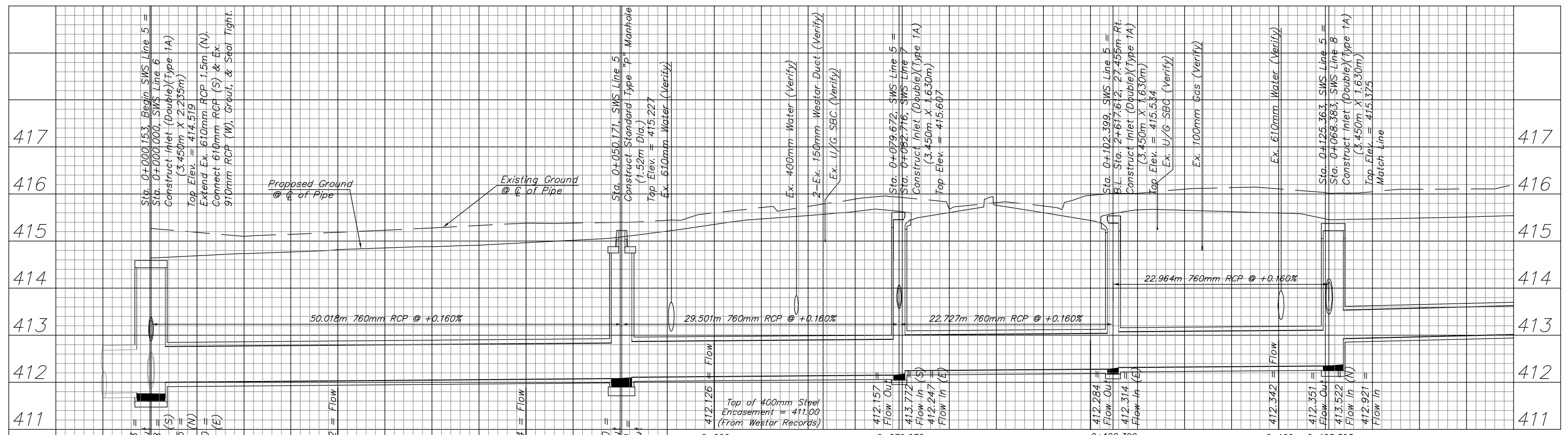


BENCHMARK:
BM #9 - "□" on the Top of Curb at the South End of the Curb Return at the Southeast Corner of Tyler Road and 29th Street North.
Sta. 2+612.58, 13.78m Rt.
Elev. 415.765 SI Units (1364.06 MSL)



The location of the Ex. 910mm SWS shown here is based on Field Observations, but has not been precisely tied down. It is strongly recommended that the Contractor excavate the pipe and take accurate measurements before ordering the SWS Inlet.

KDOT METRIC



| | | |
|-----------------------------|---------------------|--|
| PROJECT NUMBER 472-83863 | SHEET NAME SWS16 | ENGINEERING DIRECTORY F:\29th North |
| DESIGN TPV | DRAWN TPV | APPROVED JFB |
| DATE Oct. 2004 | SCALE Noted | BAUGHMAN NO 02-02-E232 |

CAPITAL IMPROVEMENT PROJECT
29TH ST. NORTH SWS PLAN & PROFILE
SWS Line 5 - Sta. 0+000.153 to Sta. 0+125.363

BAUGHMAN COMPANY, P.A.
ENGINEERING, SURVEYING, & PLANNING
316-262-7271 • 315 ELLIS • WICHITA, KANSAS 67211