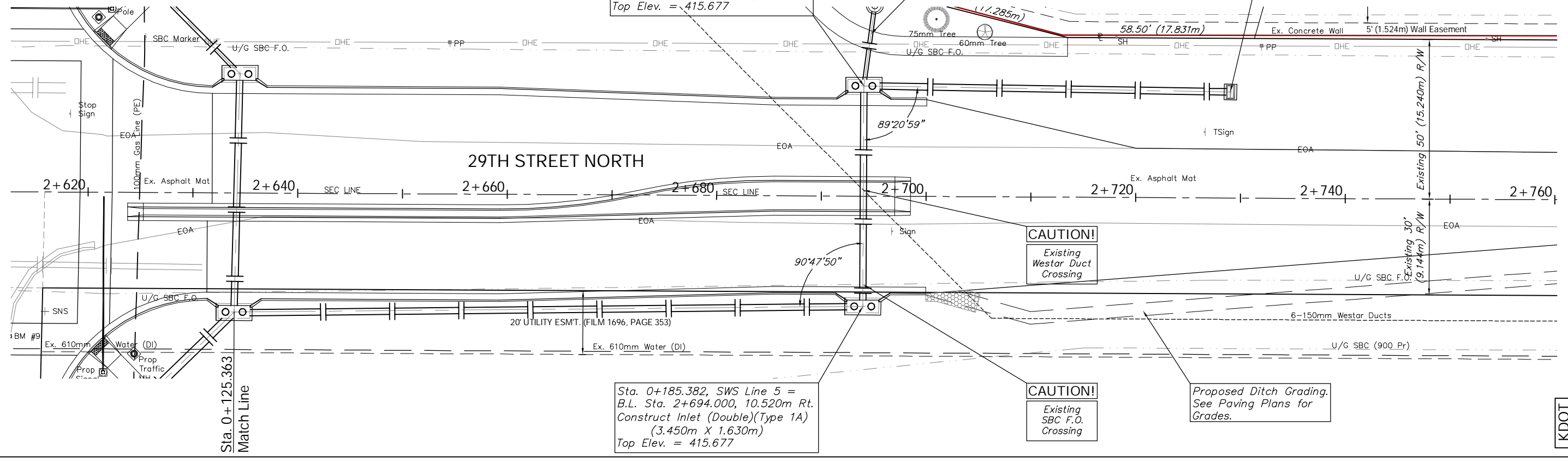


BENCHMARK:
BM #9 - "□" on the Top of Curb at the South End of the Curb Return at the Southeast Corner of Tyler Road and 29th Street North.
Sta. 2+612.58, 13.78m Rt.
Elev. 415.765 SI Units (1364.06 MSL)

Sta. 0+206.421, SWS Line 5 =
Sta. 0+007.722, SWS Line 5a =
B.L. Sta. 2+694.000, 10.520m Lt.
Construct Inlet (Double)(Type 1A)
(3.450m X 1.630m)
Top Elev. = 415.677

Sta. 0+241.421, End SWS Line 5 =
B.L. Sta. 2+728.998, 10.122m Lt.
Construct Special Ditch Inlet.
(1.500m X 1.200m)
See Special Ditch Inlet Detail Sheet.



Sta. 0+185.382, SWS Line 5 =
B.L. Sta. 2+694.000, 10.520m Rt.
Construct Inlet (Double)(Type 1A)
(3.450m X 1.630m)
Top Elev. = 415.677

CAUTION!
Existing SBC F.O. Crossing

Proposed Ditch Grading.
See Paving Plans for Grades.

KDOT METRIC

