

FHWA REGION NO.	STATE	PROJECT NO.	FISCAL YEAR	SHEET NO.	TOTAL SHEETS
7	KANSAS	87 N-0294-01	2004	49	129

SCALE:  
1:200 HORIZONTAL  
1:40 VERTICAL

BENCHMARK:  
BM #9 - "□" on the Top of Curb at the South End of the Curb Return at the Southeast Corner of Tyler Road and 29th Street North.  
Sta. 2+612.58, 13.78m Rt.  
Elev. 415.765 SI Units (1364.06 MSL)

BENCHMARK:  
BM #9 - "□" on the Top of Curb at the South End of the Curb Return at the Southeast Corner of Tyler Road and 29th Street North.  
Sta. 2+612.58, 13.78m Rt.  
Elev. 415.765 SI Units (1364.06 MSL)

SCALE:  
1:200 HORIZONTAL  
1:40 VERTICAL

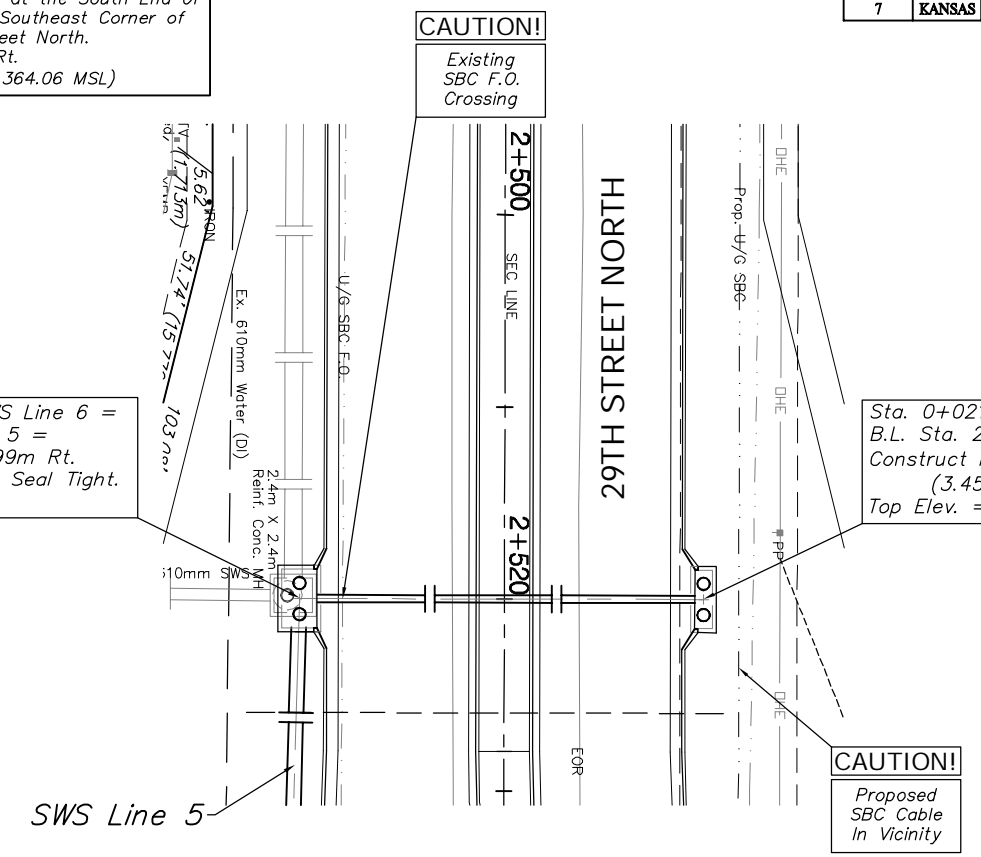
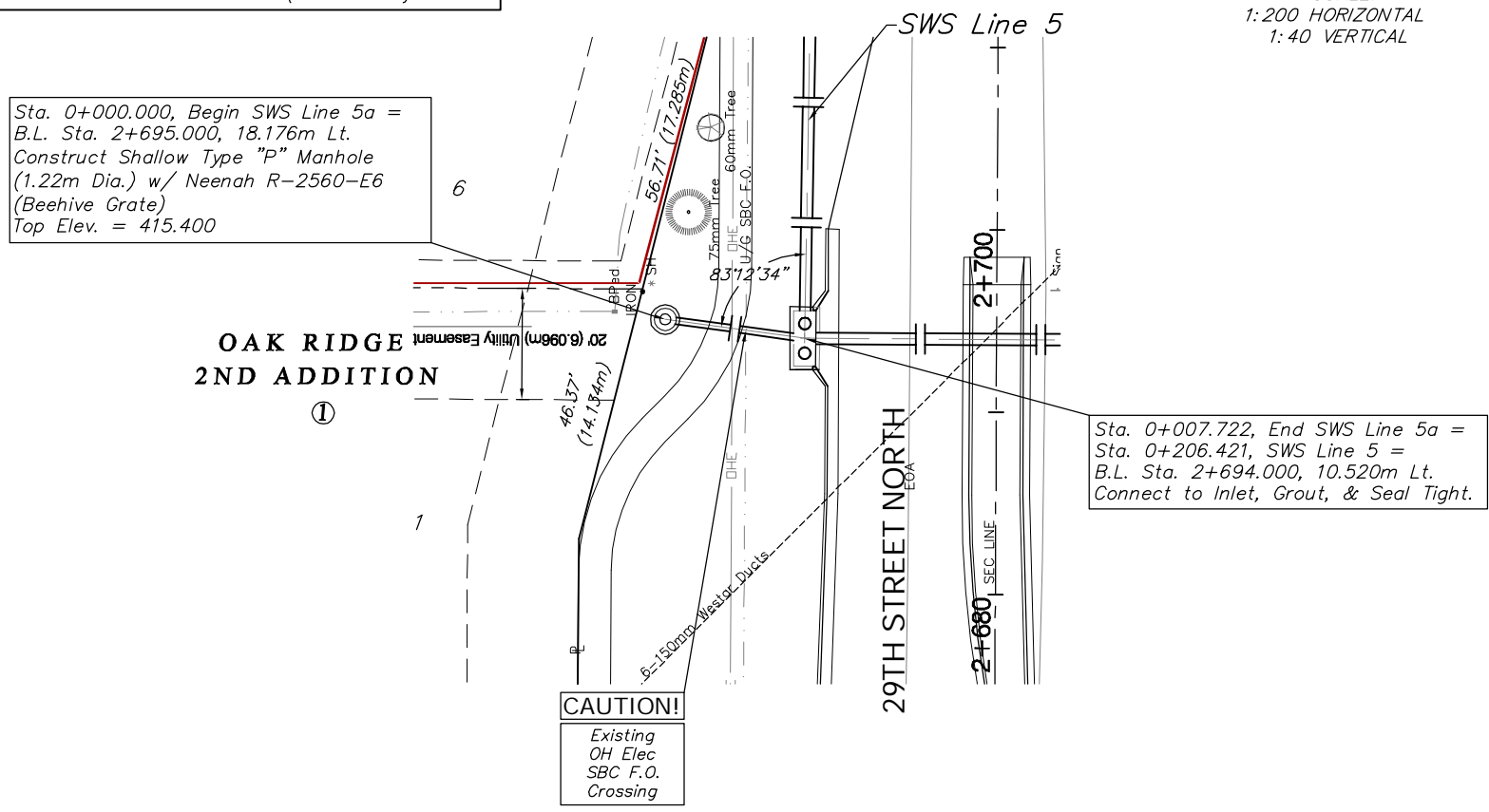
Sta. 0+000.000, Begin SWS Line 5a = B.L. Sta. 2+695.000, 18.176m Lt. Construct Shallow Type "P" Manhole (1.22m Dia.) w/ Neenah R-2560-E6 (Beehive Grate)  
Top Elev. = 415.400

Sta. 0+000.000, Begin SWS Line 6 = Sta. 0+000.153, SWS Line 5 = B.L. Sta. 2+519.834, 11.299m Rt. Connect to Inlet, Grout, & Seal Tight.  
Top Elev. = 414.591

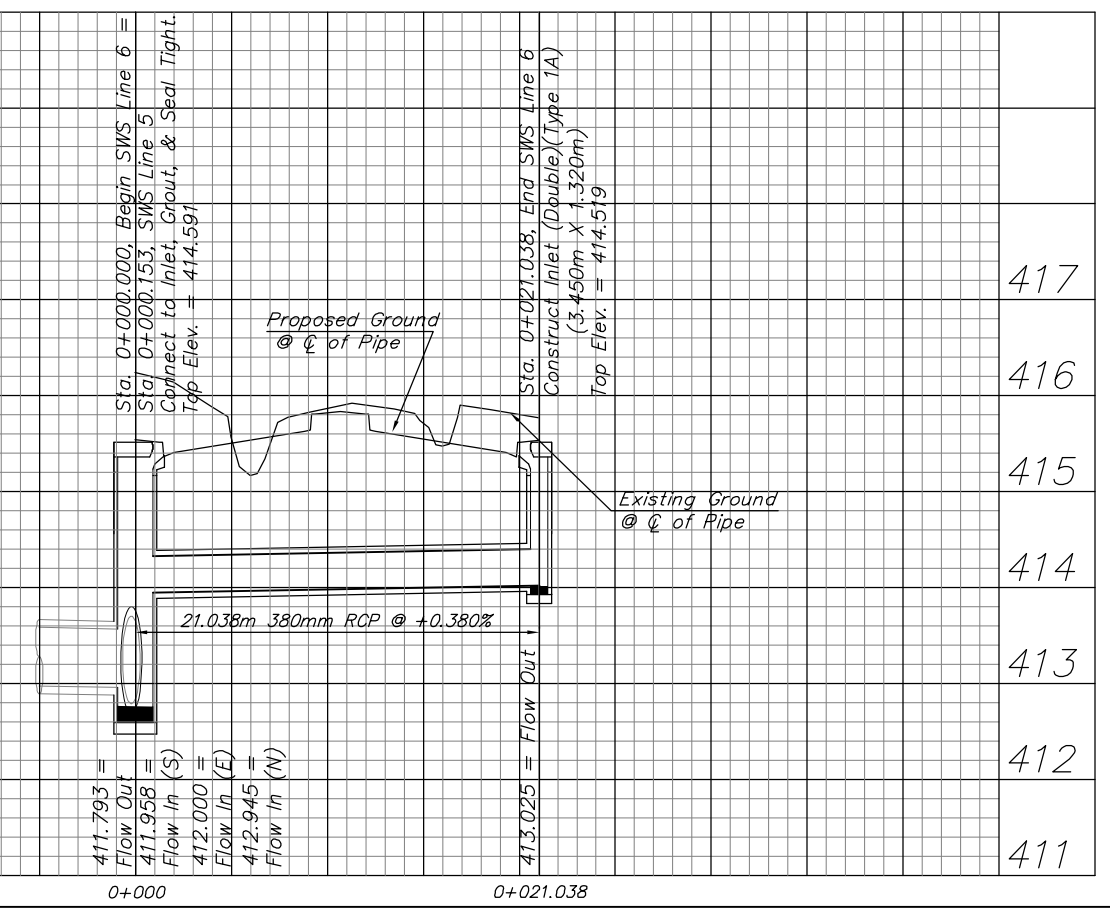
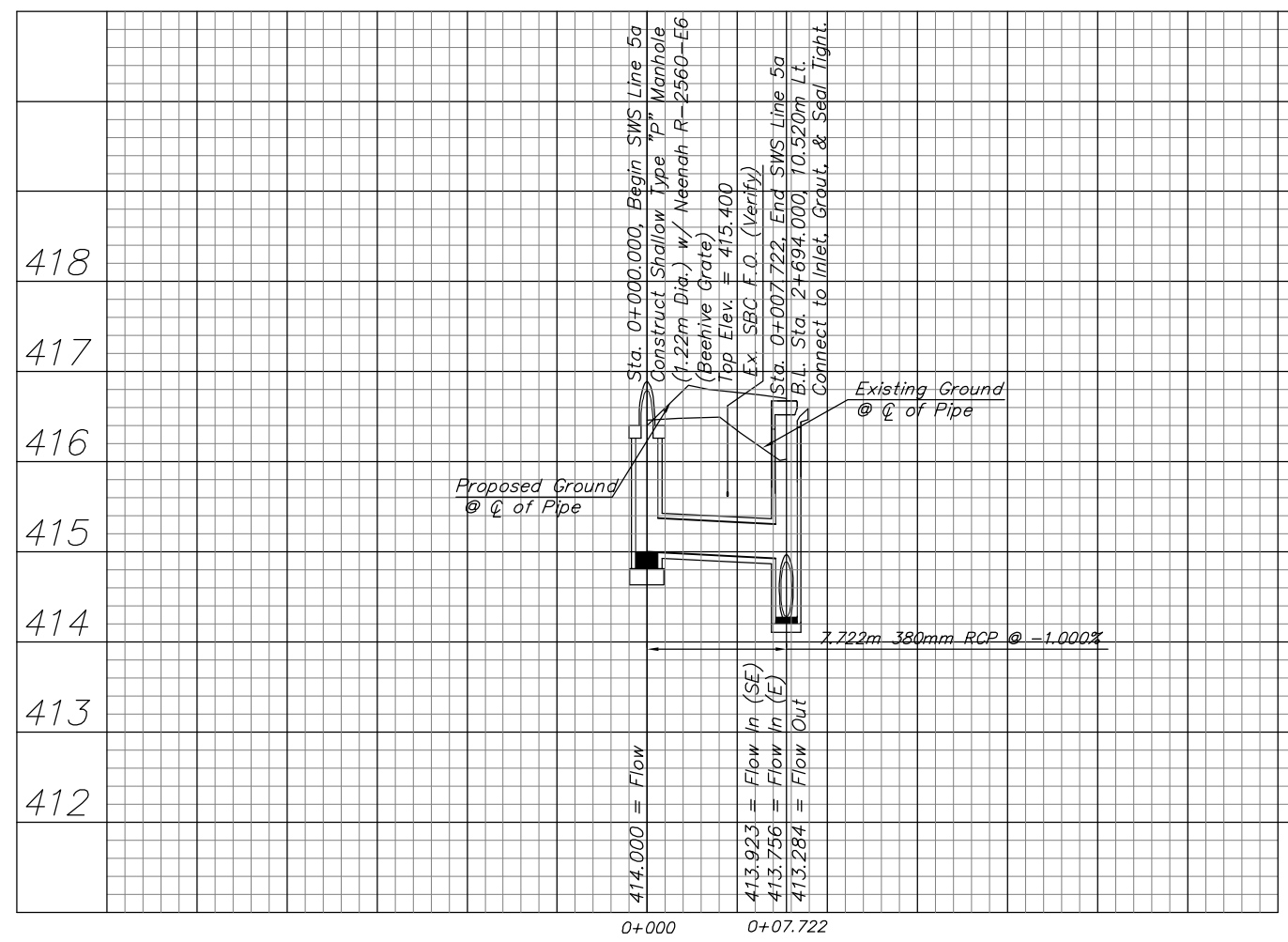
Sta. 0+021.038, End SWS Line 6 = B.L. Sta. 2+520.000, 10.370m Lt. Construct Inlet (Double)(Type 1A) (3.450m X 1.320m)  
Top Elev. = 414.519

Sta. 0+007.722, End SWS Line 5a = Sta. 0+206.421, SWS Line 5 = B.L. Sta. 2+694.000, 10.520m Lt. Connect to Inlet, Grout, & Seal Tight.

OAK RIDGE 2ND ADDITION



KDOT METRIC



PROJECT NUMBER 472-83863		SHEET NAME SWS18		ENGINEERING DIRECTORY F:\29th North\Earth\dwg	
DESIGN TPV	DRAWN TPV	APPROVED JFB	DATE Oct. 2004	SCALE Noted	BAUGHMAN NO 02-02-E232

CAPITAL IMPROVEMENT PROJECT  
29TH ST. NORTH SWS PLAN & PROFILE  
SWS Line 5a & SWS Line 6

BAUGHMAN COMPANY, P.A.  
ENGINEERING, SURVEYING, & PLANNING  
316-262-7271 • 315 ELLIS • WICHITA, KANSAS 67211

SHEET  
49  
OF  
129