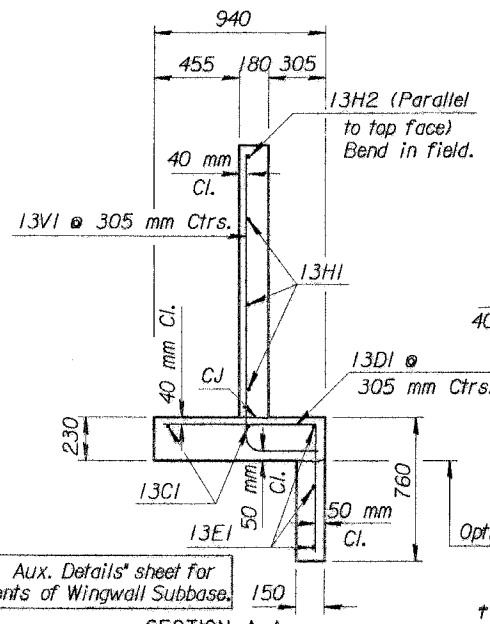
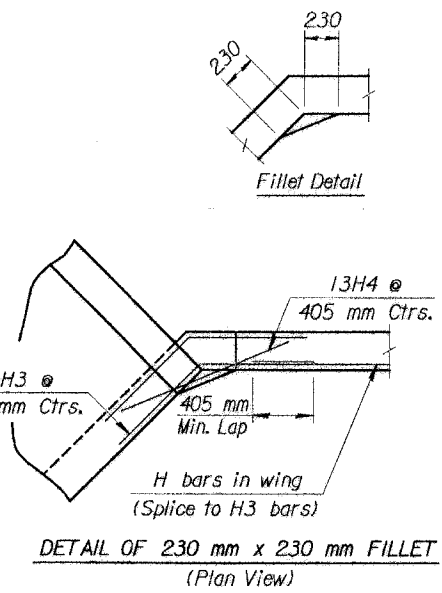


ELEVATION OF WINGWALL
(Backface Shown)



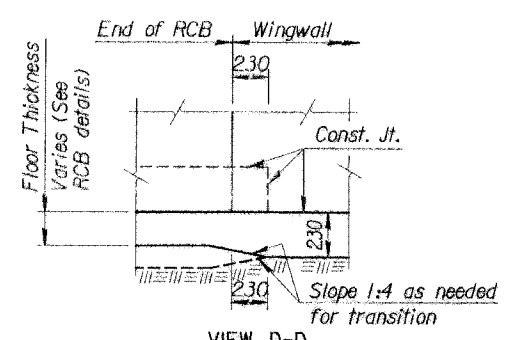
SECTION A-A



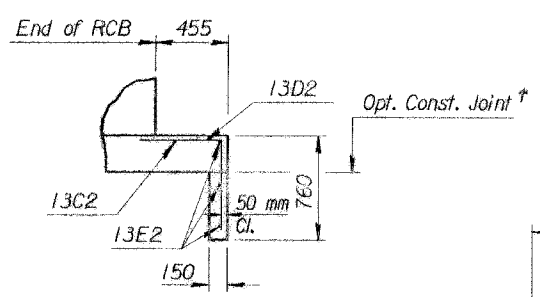
DETAIL OF 230 mm x 230 mm FILLET
(Plan View)

† NOTE: Const. Jt. may be used at Contractor's option when approved by the Engineer. DI bars or mesh may be spliced thus: Minimum overlap shall be 380 mm. No increase in quantities or cost shall be allowed when Contractor elects this option.

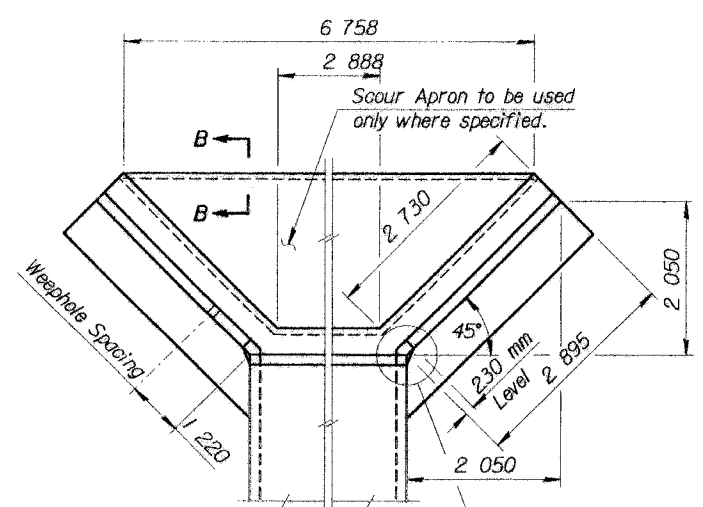
NOTE:
EF = Each Face
NS = Near Side
FS = Far Side
CJ = Const. Joint



VIEW D-D

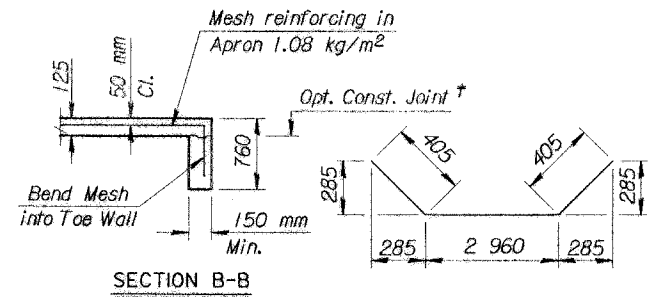


SECTION E-E

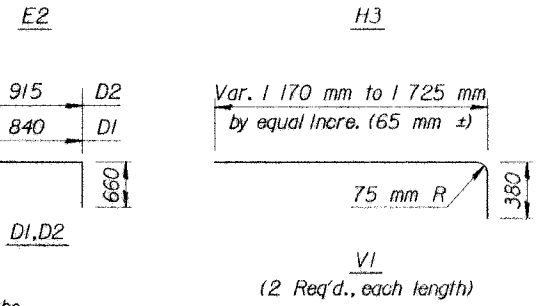


WING DIMENSIONS FOR NORMAL BOX
(1:3.5 Embankment Slope)

NOTE: Space weepholes to clear reinforcing steel. See "RCB Aux. Details" sheet for additional weephole details.



SECTION B-B



BENDING DIAGRAM
(All dimensions are out to out of bars.)

Quantities listed below are included in the Summary of Quantities shown on the RCB details. For Information Only

WINGWALL QUANTITIES (One End Only)	
Grade 28 Concrete:	
Wingwalls	3.8 m ³
Apron	1.8 m ³
Soil Saver	0.0 m ³
Reinforcing Steel	
Welded Wire Fabric	173 kg

NO.	DATE	REVISIONS	BY	APP'D
KANSAS DEPARTMENT OF TRANSPORTATION				
Br. No. 87 N-87-00(000) Sta. 1+625				
FLARED WINGWALLS 1.2 m Rise (0'SKEW)				
BR 10-00-04-SI Sedgwick Co.				
DESIGNED	APP'D	QUANTITIES	TRACED	
DESIGN CK.	DETAL CK.	QUAN. CK.	THACE CK.	

NOTE: Reinforcing Bar List is for both wings at one end of box only.

0° Skew	No.	13C1	13D1	13E1	13C2	13D2	13E2	13V1	13H1	13H2	13H3	13H4
	4	18*	6	1	8*	3*	20	6	2	16*	8	
	Length	3 530	1 500	2 665	3 250	1 575	3 770	*	2 540	3 125	1 520	915

Plotted By: thorsell
 File: N:\tr\87\87N-0294-01\Drawings\87N-0294.dgn
 Plot Date: 02-01-2003 08:30