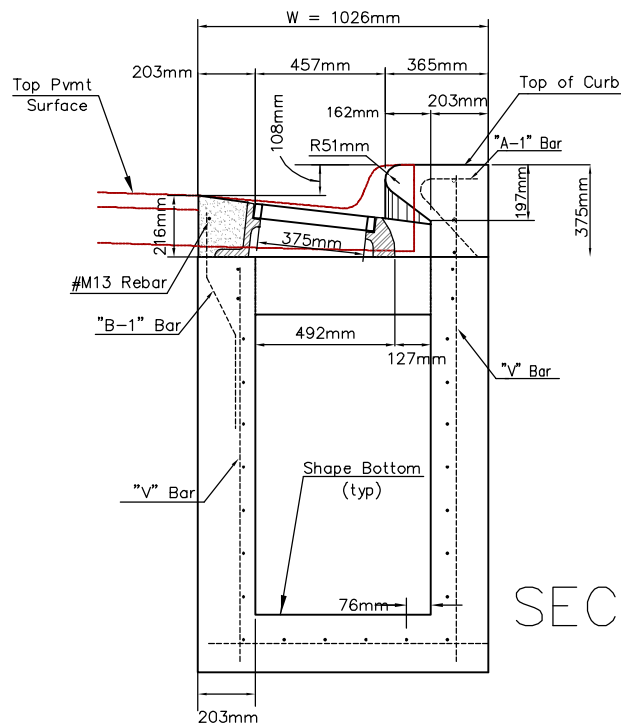
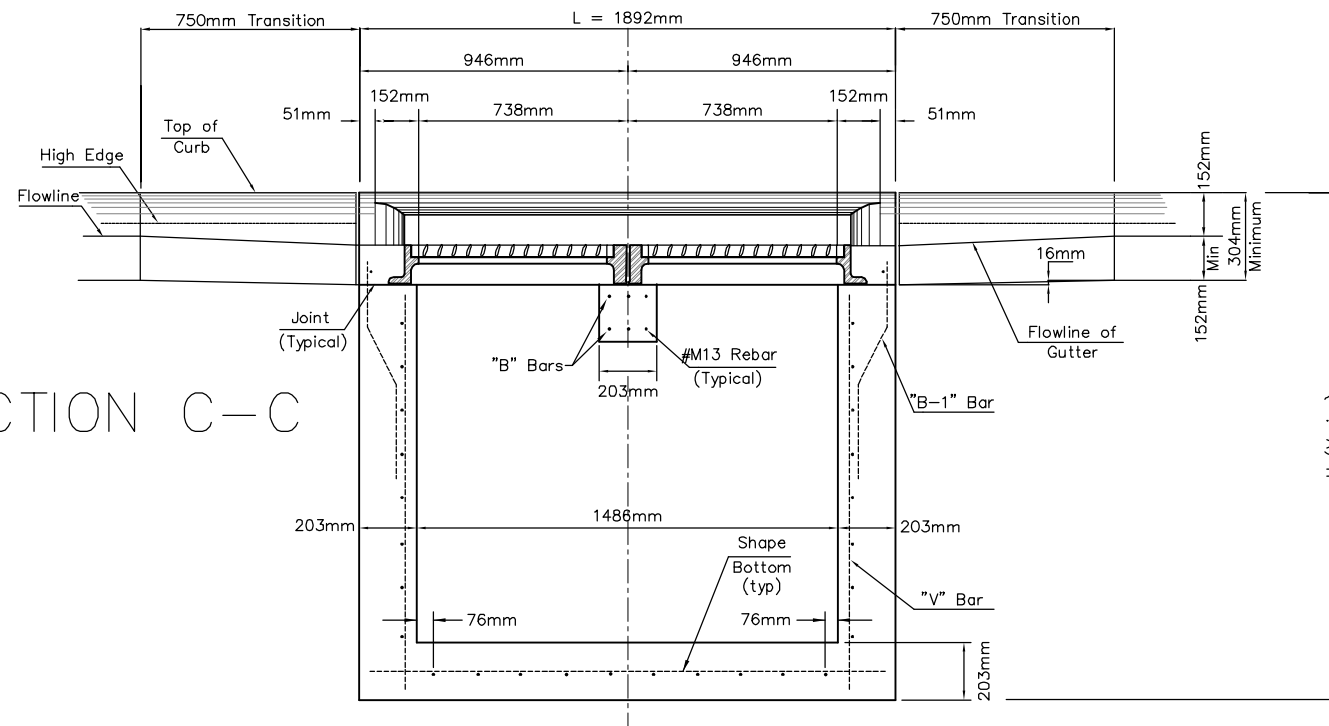


FHWA REGION NO.	STATE	PROJECT NO.	FISCAL YEAR	SHEET NO.	TOTAL SHEETS
7	KANSAS	87 N-0294-01	2004	59	129

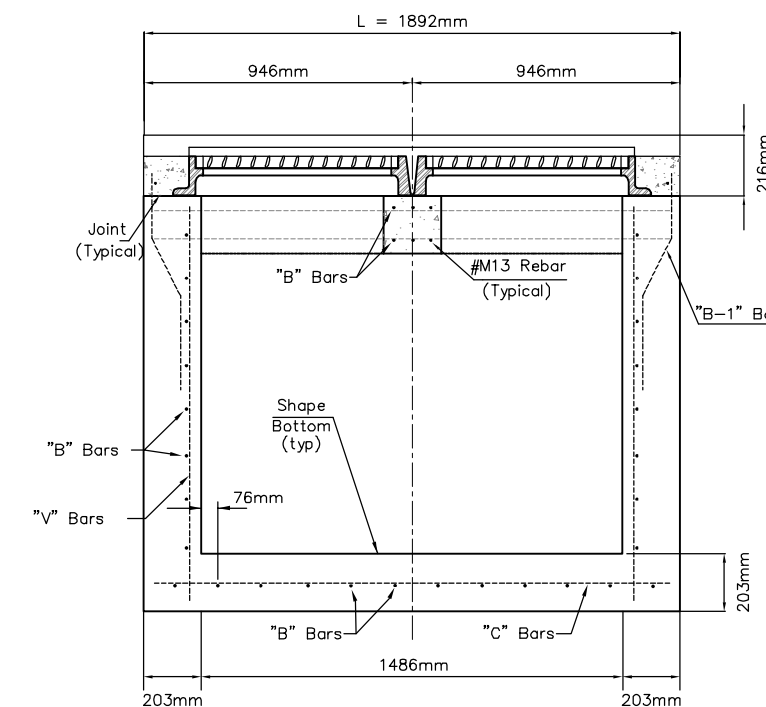


SECTION A-A

SECTION C-C

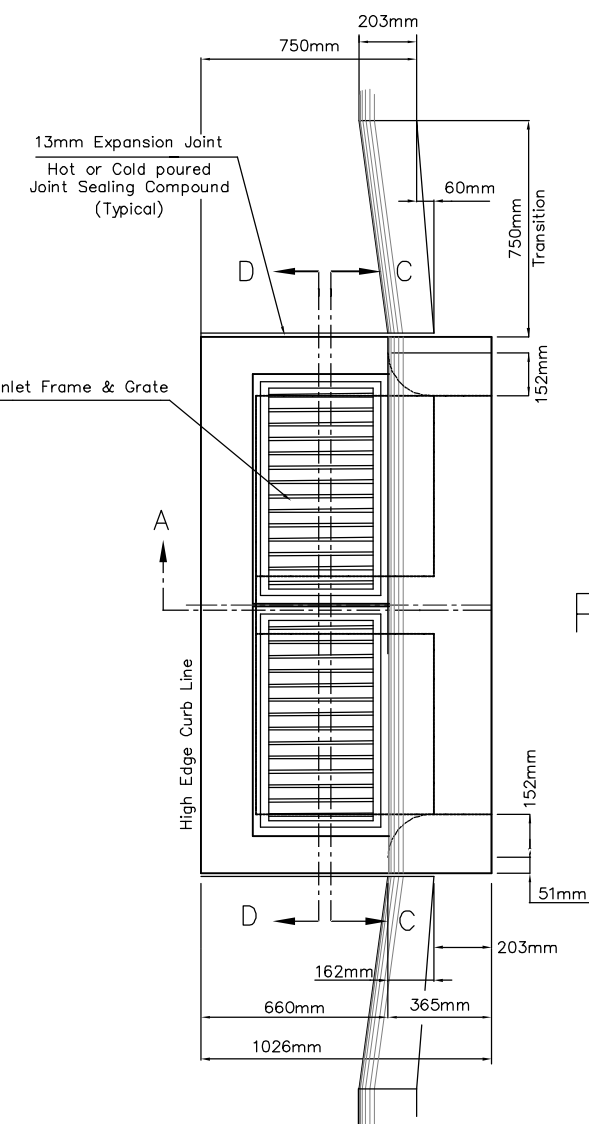


SECTION D-D

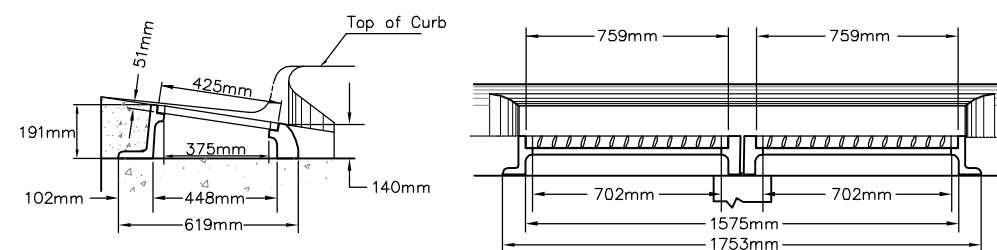


General Notes

1. Use class A mix specified for the City of Wichita concrete pavement throughout curb inlet. All exposed edges shall be finished with an edging tool. Reinforcing bars shall be bent around pipe.
2. Inlet invert shall be shaped with 8 sack mix concrete to create flow channels and to increase hydraulic efficiency such that the inlet will be self cleaning between all inlet and/or outlet pipes.
3. All bars are #M13 with 150mm spacing and shall have a minimum clearance of 35mm unless otherwise noted on the plans.
4. No deductions will be made in pay length of curb, gutter, or curb and gutter through the inlet area.
5. Use Neenah R-3288 HV2 Double Inlet Frame w/ two piece grate or approved equal. Inlet frame to be proof load tested to 178,000 N. on the unsupported side.
6. Reinforcing bars shall be cut or bent around pipes. No deduction in concrete quantities shall be made for pipe openings.
7. The vanes of the grate shall be oriented with respect to the flow arrows shown on the plans.
8. All castings shall be gray iron and shall comply with KDOT Standard Specifications.
9. All exposed cast iron surfaces shall be painted either in the shop topcoat or a field coat of organic zinc, each coat to be 3 to 4 mils.

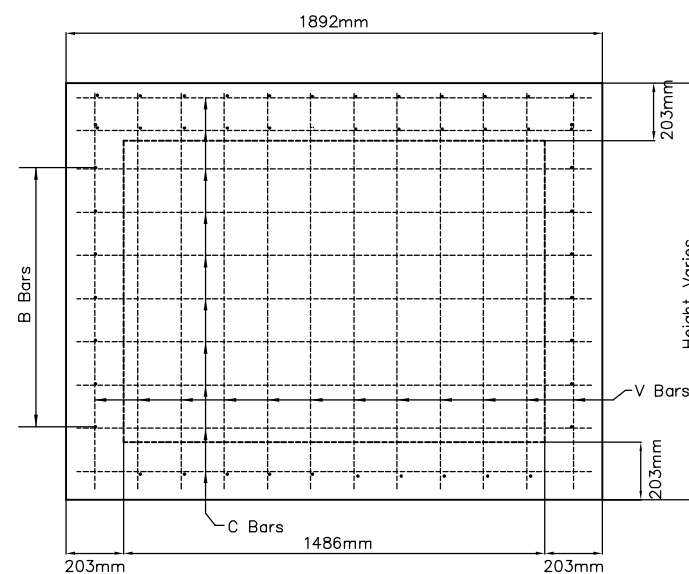


PLAN VIEW

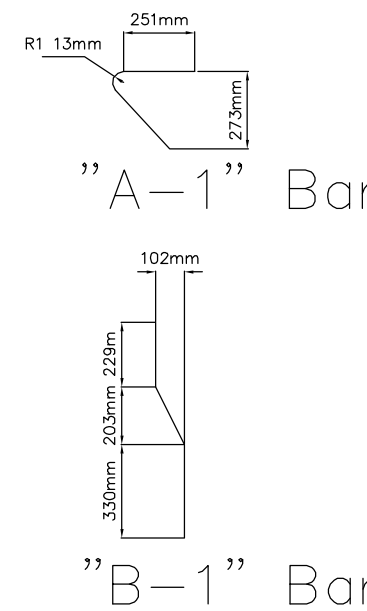


INLET FRAME WITH TWO-PIECE GRATE

(Neenah R-3288 HV2 Inlet or Approved Equal)



REAR WALL



Revised - Dec. 1995 - SGSJR

PROJECT NUMBER		SHEET NAME		ENGINEERING DIRECTORY	
472-83863		Type 2		F:\29th North\Details	
DESIGN	DRAWN	APPROVED	DATE	SCALE	BAUGHMAN NO
None		JFB	Oct. 2004	None	02-02-E232

CAPITAL IMPROVEMENT PROJECT	
STANDARD TYPE 2 INLET DETAILS	

BAUGHMAN COMPANY, P.A.	
ENGINEERING, SURVEYING, & PLANNING	
316-262-7271 • 315 ELLIS • WICHITA, KANSAS 67211	

SHEET
59
OF
129