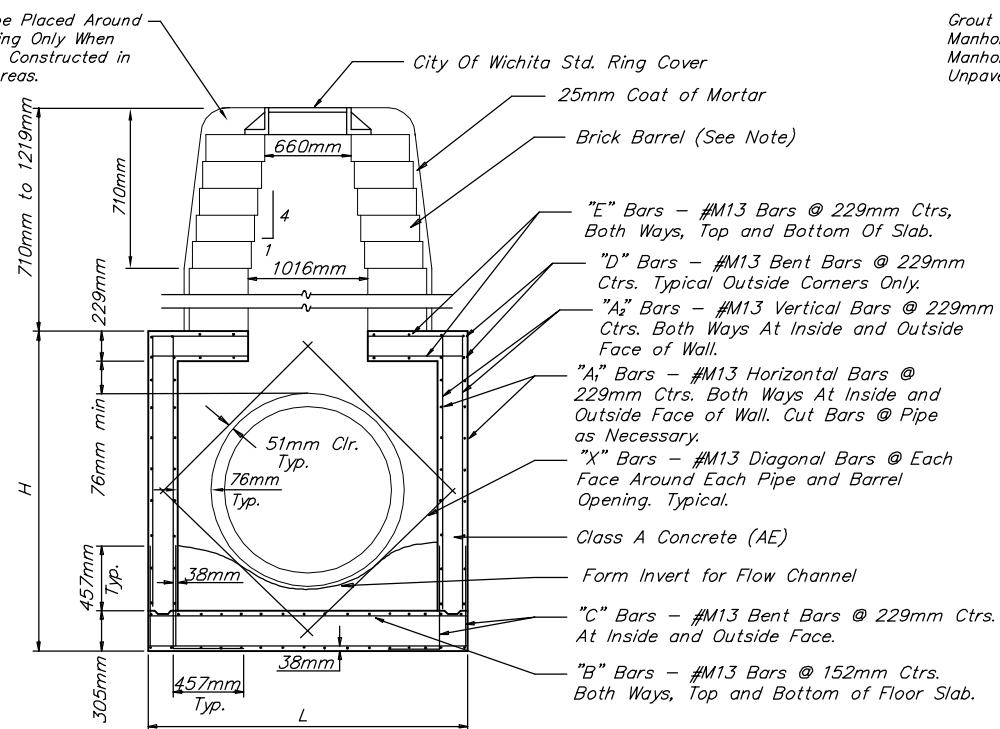
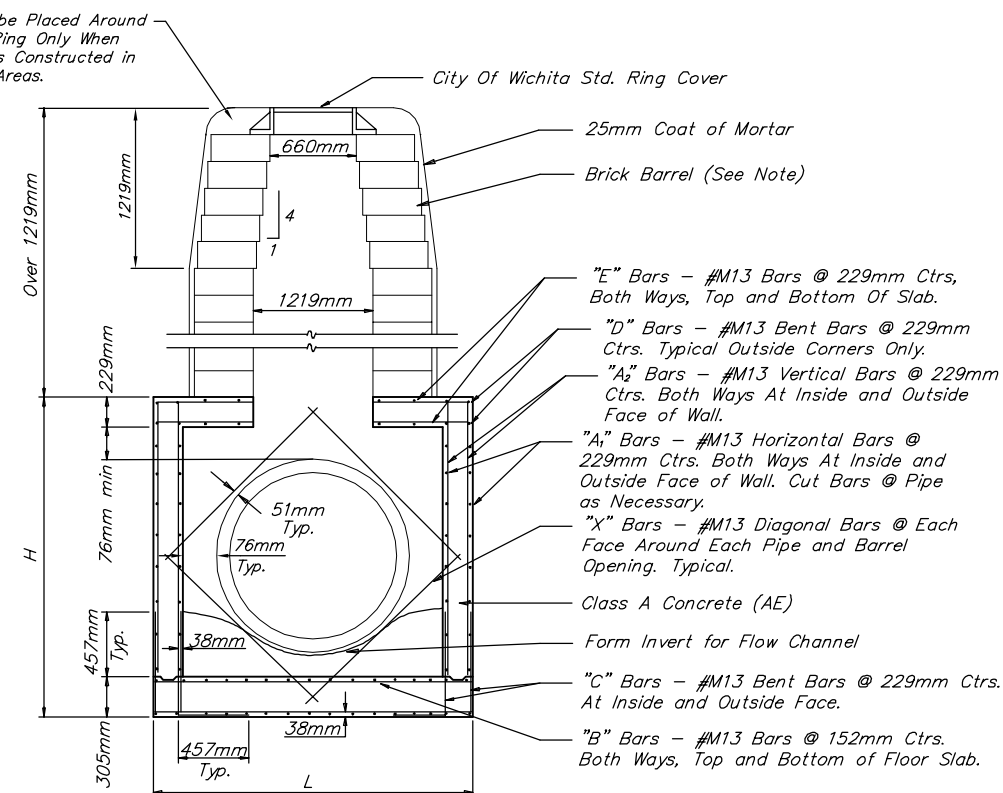


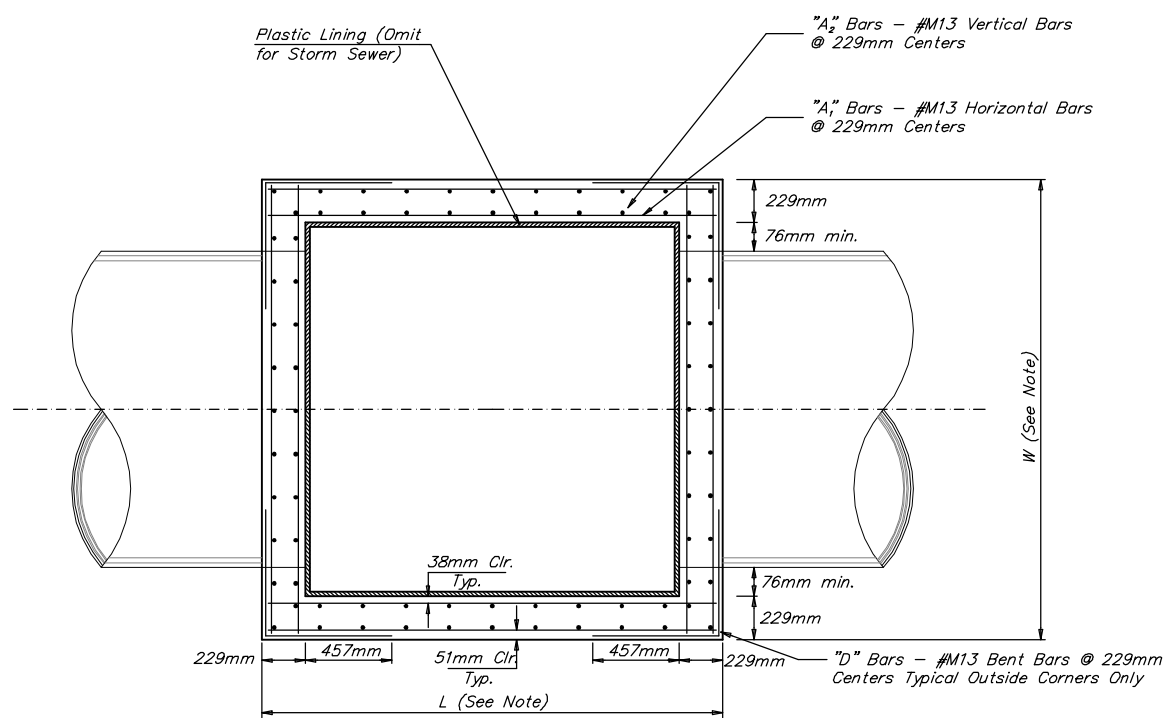
**REINFORCED CONCRETE MANHOLE**  
DEPTH OF STACK: 0mm TO 710mm



**REINFORCED CONCRETE MANHOLE**  
DEPTH OF STACK: 710mm TO 1219mm



**REINFORCED CONCRETE MANHOLE**  
DEPTH OF STACK: OVER 1219mm



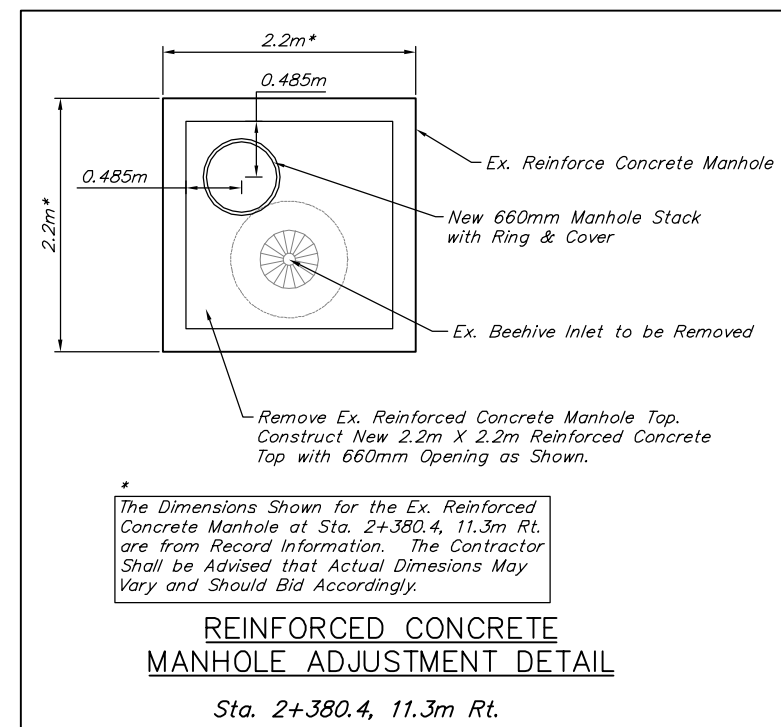
TOP VIEW

**GENERAL NOTES**

BRICK BARRELS LESS THAN 4.9m DEEP SHALL HAVE 203mm WALLS EXCEPT WHEN LOCATED WITHIN PUBLIC STREET OR ALLEY PAVEMENT; THEN THE WALL SHALL BE 305mm. THE "L" AND "W" DIMENSIONS SHALL BE A MINIMUM OF 1880mm TO ACCOMMODATE THE 305mm BRICK STACK. BARRELS SHALL BE SUBSIDIARY THE BID ITEM "REINFORCED CONCRETE MANHOLE." PRECAST STACKS SHALL BE ALLOWED.

THE FLOORS OF ALL MANHOLES SHALL BE SHAPED WITH FLOW CHANNELS SUCH THAT THE MANHOLES WILL BE SELF CLEANING AND FREE OF AREAS WHERE SOLIDS COULD BE DEPOSITED AS SEWAGE FLOWS THROUGH THE MANHOLE FROM ALL INLET PIPES TO THE OUTLET PIPE. FLOW CHANNELS SHALL BE FORMED TO MATCH THE BOTTOM HALVES OF THE INFLOWING PIPES AND THE OUTFLOWING PIPE AS SHOWN BY THE DRAWINGS. MANHOLE FLOORS SHALL HAVE SLOPES OF 25.000% IN THE AREAS OUTSIDE OF THE FLOW CHANNELS SLOPED TOWARD THE FLOW CHANNELS. PIPES LAID THROUGH MANHOLES SHALL HAVE THE TOP HALF REMOVED TO NEAT LINES FOR THE FULL INSIDE DIAMETER OF THE MANHOLE. MANHOLE FLOORS SHALL THEN BE SHAPED AROUND THE BOTTOM HALF OF THE PIPE WHICH FORMS THE FLOW CHANNEL. NO ADDITIONS IN QUANTITIES SHALL BE ALLOWED FOR FLOOR SHAPING.

FOR NOTES AND DETAILS ON CAST IRON COVERS AND RINGS, SEE THE "CITY OF WICHITA" MANHOLE FRAME AND COVER DETAIL.



\* The Dimensions Shown for the Ex. Reinforced Concrete Manhole at Sta. 2+380.4, 11.3m Rt. are from Record Information. The Contractor Shall be Advised that Actual Dimensions May Vary and Should Bid Accordingly.

**REINFORCED CONCRETE MANHOLE ADJUSTMENT DETAIL**

Sta. 2+380.4, 11.3m Rt.

PROJECT NUMBER 472-83863		SHEET NAME RCMH		ENGINEERING DIRECTORY F:\29th North\Details	
DESIGN STAFF	DRAWN STAFF	APPROVED JFB	DATE Oct. 2004	SCALE None	BAUGHMAN NO 02-02-E232

CAPITAL IMPROVEMENT PROJECT  
**STANDARD DETAILS for**  
**REINFORCED CONCRETE MANHOLE**

**BAUGHMAN COMPANY, P.A.**  
ENGINEERING, SURVEYING, & PLANNING  
316-262-7271 • 315 ELLIS • WICHITA, KANSAS 67211

