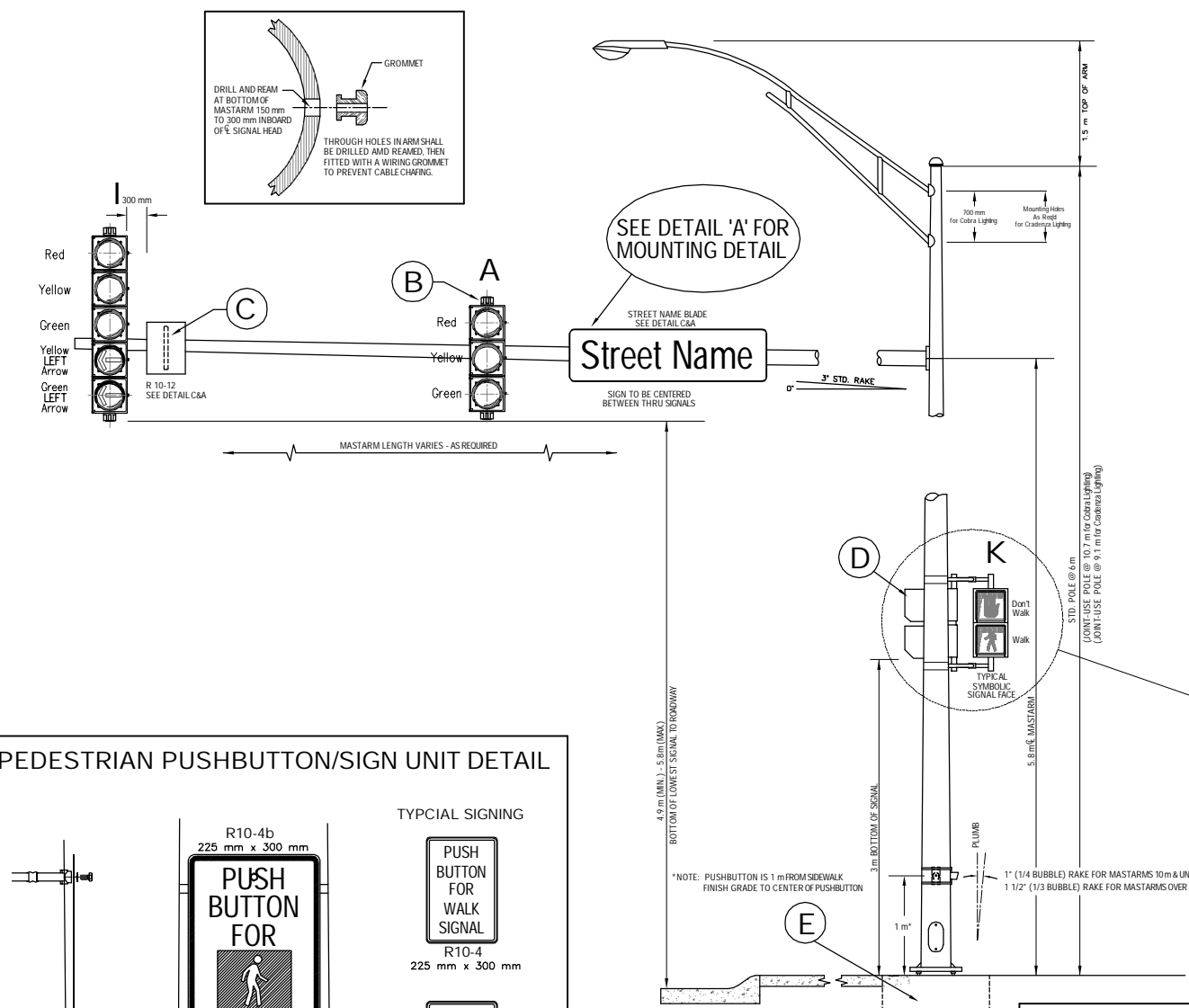
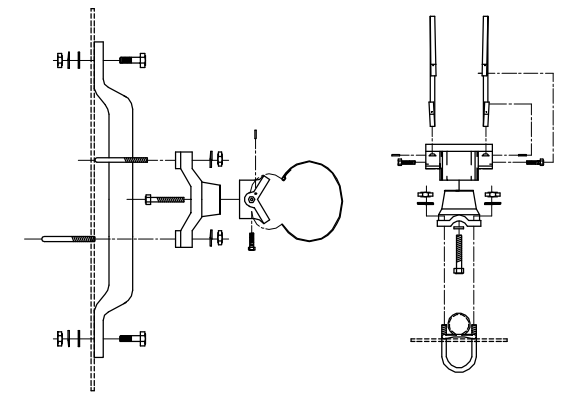


FHWA REGION NO.	STATE	PROJECT NO.	FISCAL YEAR	SHEET NO.	TOTAL SHEETS
7	KANSAS	87 N-0294-01	2004	74	129

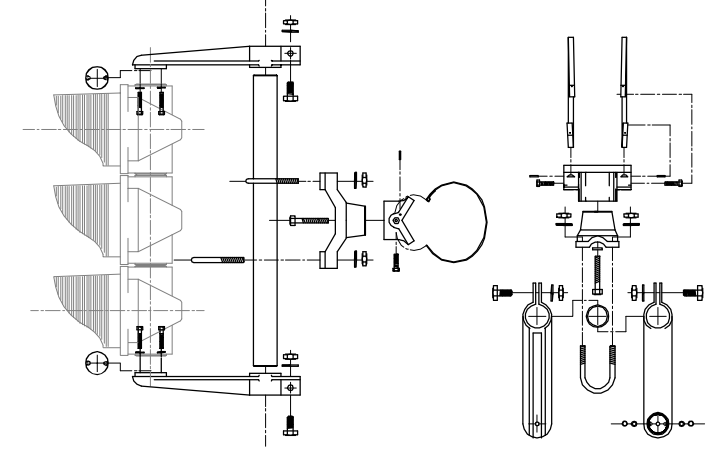


BANDED SIGN MOUNTING BRACKET DETAIL



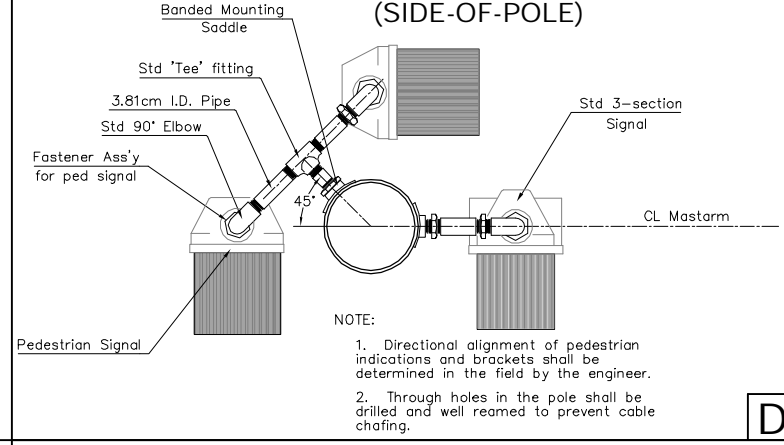
A

TYPE I SIGNAL MOUNTING BRACKET ASSEMBLY DETAIL



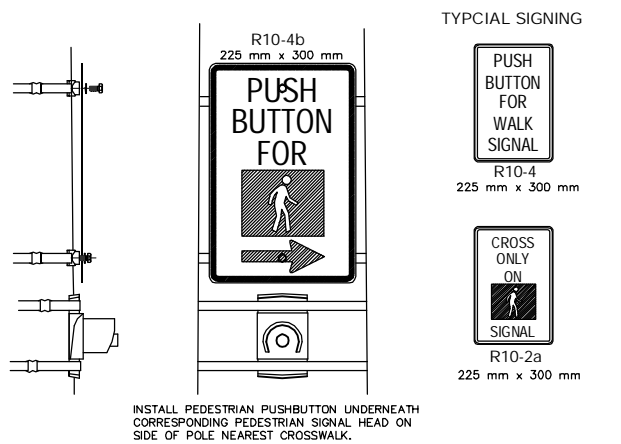
B

COMBINATION TYPE II & TYPE III SIGNAL MTG BKT ASSY (SIDE-OF-POLE)

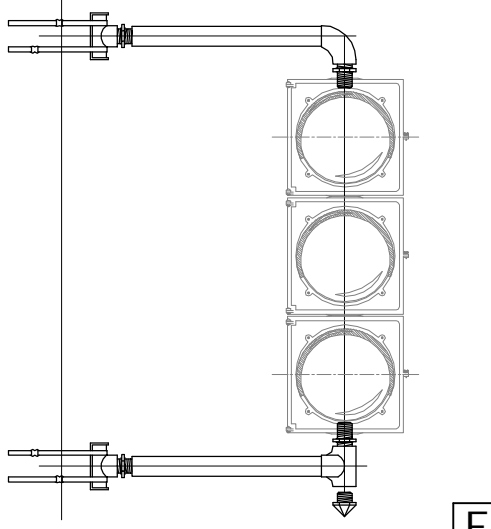


D

PEDESTRIAN PUSHBUTTON/SIGN UNIT DETAIL

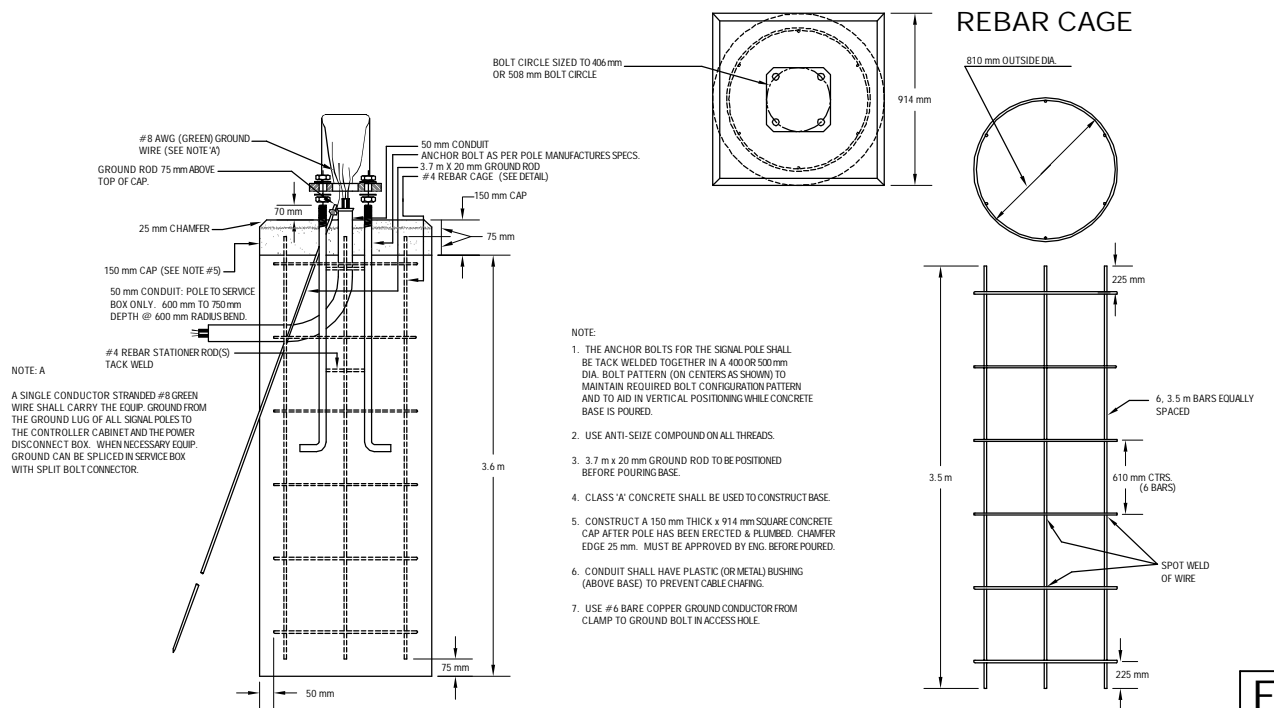


TYPE III SIDE-OF-POLE MOUNTING BRACKET ASSEMBLY



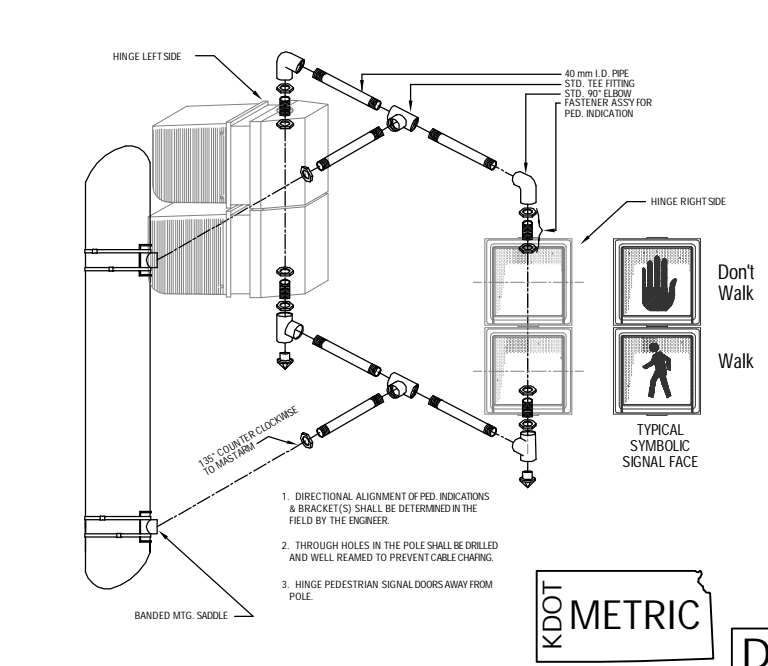
F

REINFORCED CONCRETE POLE BASE REBAR CAGE



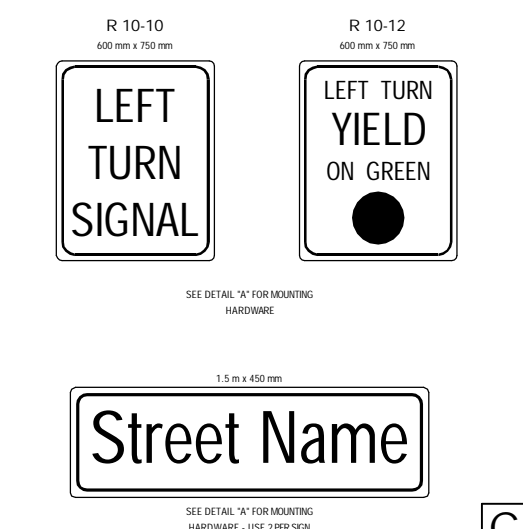
E

TYPE II SIGNAL MOUNTING BRACKET ASSEMBLY (SIDE-OF-POLE)



D

STANDARD SIGNING



C

PROJECT NUMBER 472-83505			SHEET NAME PPSP1-M		ENGINEERING DIRECTORY F:\29th North\Traffic	
DESIGN STAFF	DRAWN STAFF	APPROVED JFB	DATE Oct. 2004	SCALE None	BAUGHMAN NO 02-02-E232	
CAPITAL IMPROVEMENT PROJECT			SIGNAL POLE DETAILS			
29TH STREET NORTH - MAIZE ROAD TO TYLER ROAD			BAUGHMAN COMPANY, P.A. ENGINEERING, SURVEYING, & PLANNING 316-262-7271 • 315 ELLIS • WICHITA, KANSAS 67211			
SHEET 74 OF 129						