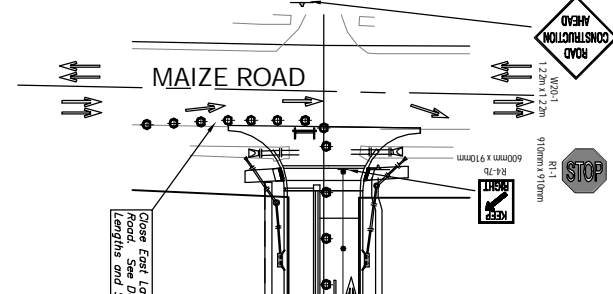
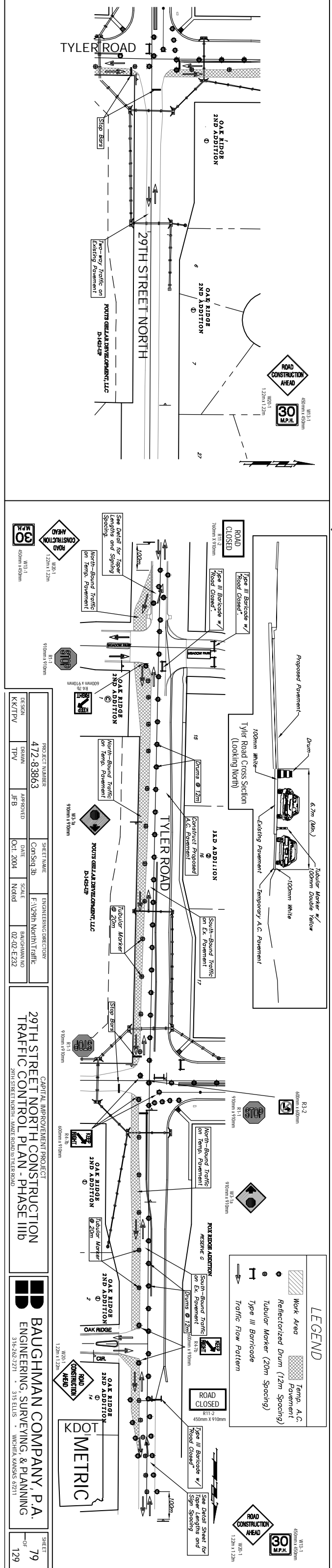
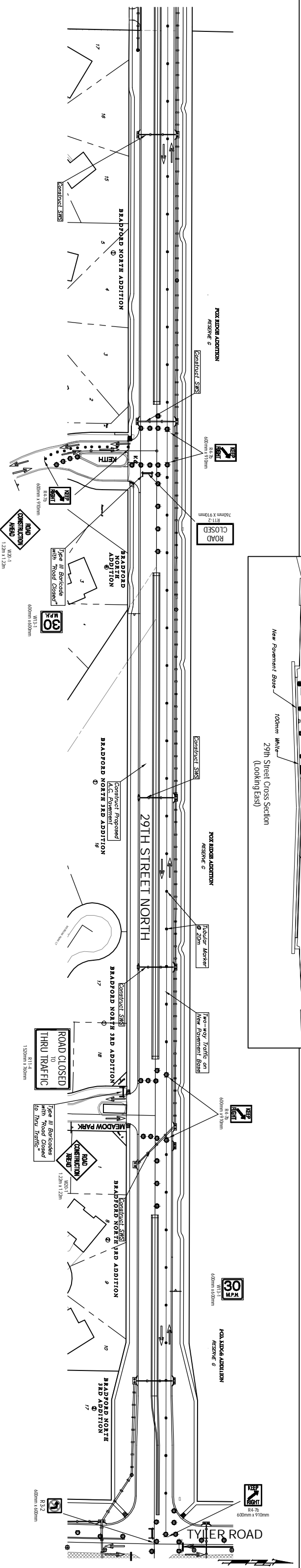
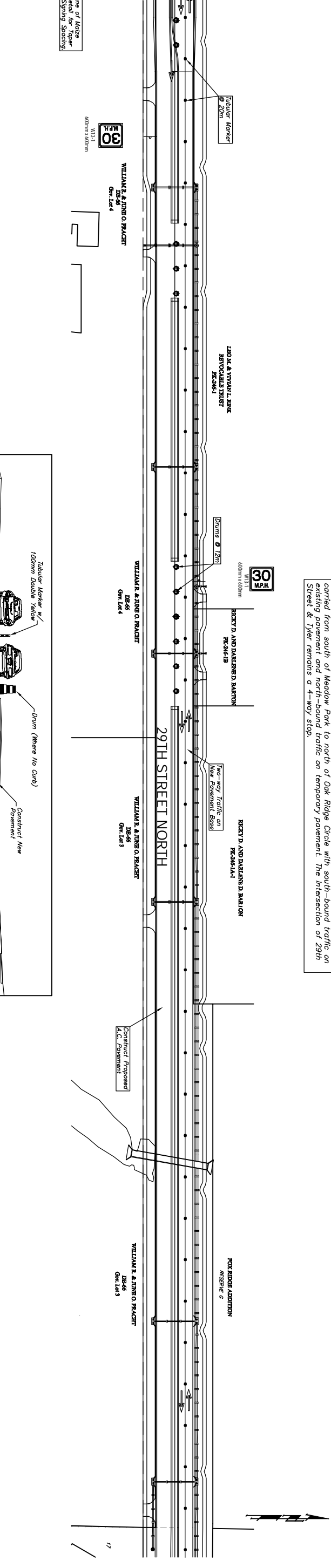


Inshall Road Construction
Ahead West of Maize Road



Phase IIb
Two-way traffic will be carried on the north half of the new pavement base of 29th Street from Maize Road to Tyler Road. Construct pavement on the south half of 29th Street from Maize Road to Tyler Road and on the west half of Tyler Road from north of Meadow Park to 29th Street. Open Meadow Park at 29th Street and open the west half of the Keith/29th Street intersection. Close Meadow Park at Tyler Road. Two-way traffic on Tyler Road to be carried from south of Meadow Park to north of Oak Ridge Circle with south-bound traffic on existing pavement and north-bound traffic on temporary pavement. The intersection of 29th Street & Tyler remains a 4-way stop.



LEGEND

	Work Area
	Temp. A.C. Pavement
	Reflectorized Drum (12m Spacing)
	Tubular Marker (20m Spacing)
	Type III Barricade
	Traffic Flow Pattern

PROJECT NUMBER	472-83863
APPROVED	F:\19th North Traffic
DATE	OCT. 2004
SCALE	NAD
ENGINEERING/DIRECTORY	BAUGHMAN CO.
DESIGN	KKTPV
DRAWN	TPV
APPROVED	JFB
DATE	OCT. 2004
SCALE	NAD
ENGINEERING/DIRECTORY	BAUGHMAN CO.
DESIGN	KKTPV
DRAWN	TPV
APPROVED	JFB
DATE	OCT. 2004
SCALE	NAD

CAPITAL IMPROVEMENT PROJECT
29TH STREET NORTH CONSTRUCTION
TRAFFIC CONTROL PLAN - PHASE IIb

BAUGHMAN COMPANY, P.A.
ENGINEERING, SURVEYING & PLANNING
315 ELLIS • WICHITA, KANSAS 67211

SHEET 79 OF 129