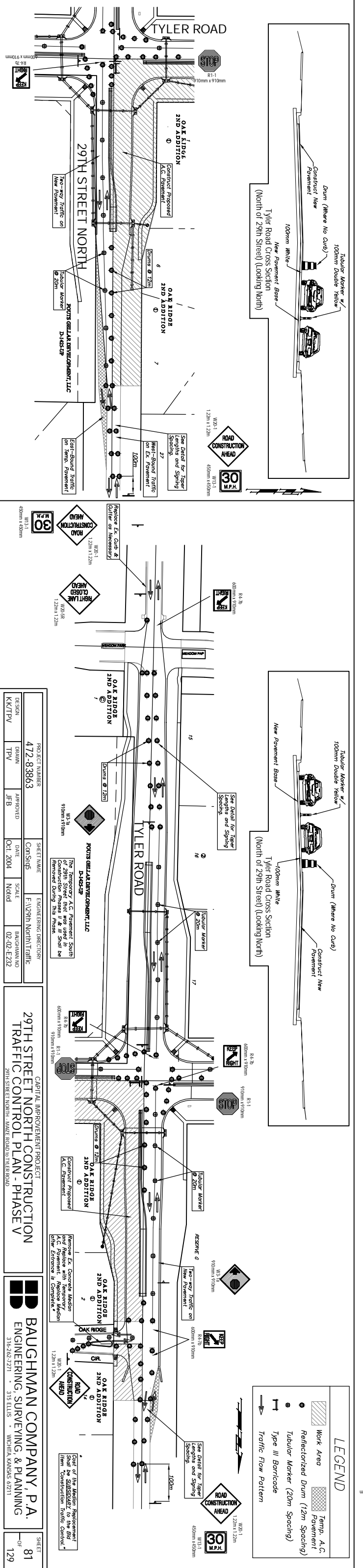
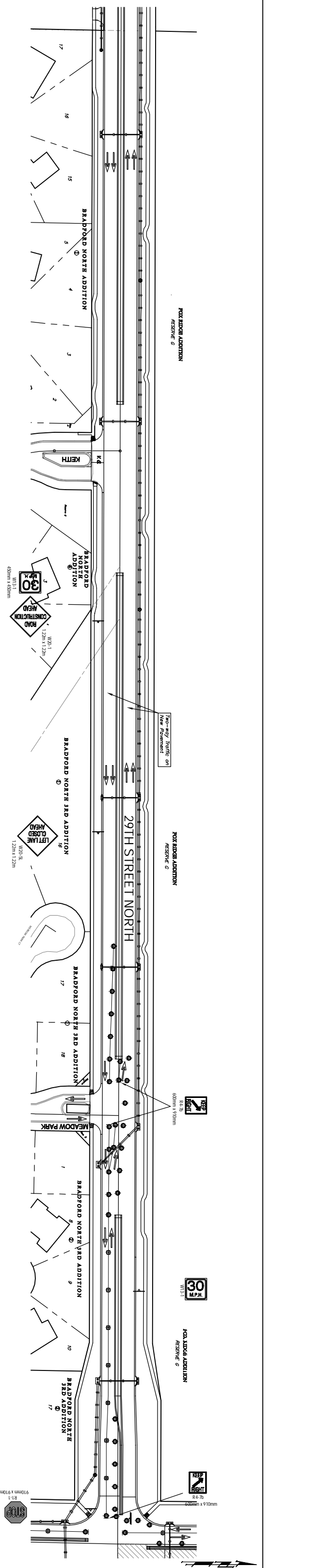
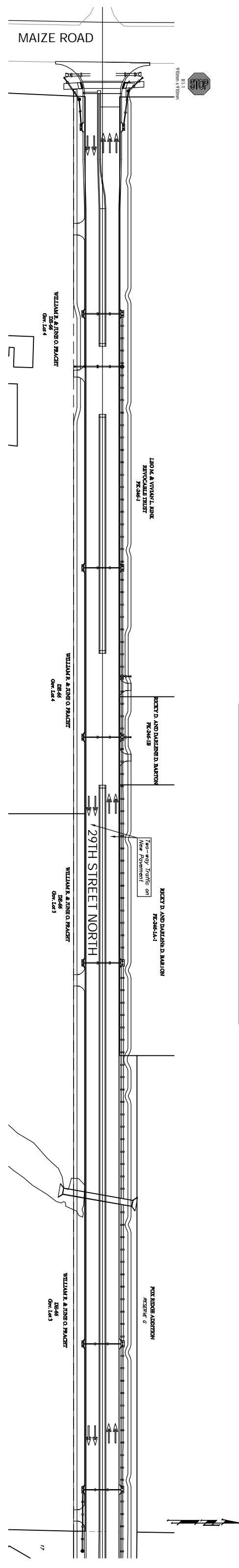


Phase V
 Construct new pavement on the east side of Tyler Road from 29th Street to north of Oak Ridge Circle and on the north side of 29th Street from Tyler east. Construct the north half of the Oak Ridge Circle/Tyler Road intersection. Two-way traffic on 29th Street to be restored on the new pavement from Maize Road to Tyler Road and on Tyler Road from Meadow Park to Oak Ridge Circle.



LEGEND

	Work Area
	Temp. A.C. Pavement
	Reflectorized Drum (12m Spacing)
	Tubular Marker (20m Spacing)
	Type III Barricade
	Traffic Flow Pattern

PROJECT NUMBER	472-83863	SHEETNAME	ENGINEERING DIRECTORY
DRAWN	TPV	DATE	CONTSQ45
APPROVED	JFB	SCALE	F:\V29th North Traffic
DISCIN	KKTPV	DATE	OCT. 2004
		NOID	02-02-E232

CAPITAL IMPROVEMENT PROJECT
29TH STREET NORTH CONSTRUCTION TRAFFIC CONTROL PLAN - PHASE V
 29TH STREET NORTH - MAIZE ROAD TO TYLER ROAD

BAUGHMAN COMPANY, P.A.
 ENGINEERING, SURVEYING & PLANNING
 316-242-2271 • 315 ELLIS • WICHITA, KANSAS 67211

SHEET 81 OF 129