

STATE	PROJECT NO.	YEAR	SHEET NO.	TOTAL SHEETS
KANSAS	87 N-0307-01	2006	1	89

INDEX OF SHEETS

SHEET NO	DESCRIPTION
1	TITLE SHEET
2-3	TYPICAL SECTIONS
4-10	PLAN SHEETS
11-13	STORM SEWER PROFILES
14-15	INTERSECTION PLANS
16-22	PAVEMENT REPAIR PLANS
23-32	PAVING DETAILS
27	NOT USED
33-42	INLET & MANHOLE DETAILS
43	MISCELLANEOUS DETAILS
44	SUMMARY OF QUANTITIES
45-48	SOIL EROSION DETAILS
49-53	TRAFFIC SIGNAL PLAN & DETAILS
54-57	PAVEMENT MARKING & SIGNING PLANS
58	CONSTRUCTION SEQUENCING
59-71	TRAFFIC CONTROL PLANS
64 & 65	NOT USED
72-89	CROSS SECTIONS

STATE OF KANSAS
DEPARTMENT OF TRANSPORTATION

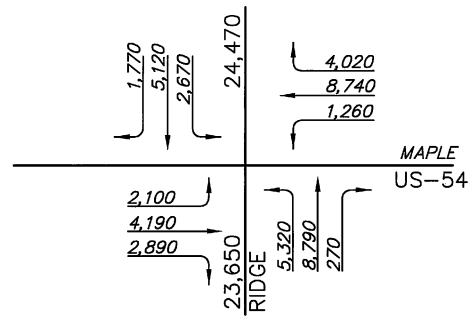
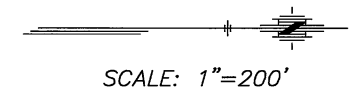
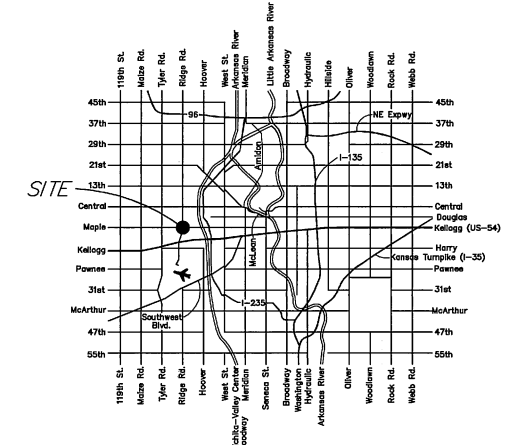


PLAN AND PROFILE OF PROPOSED
MAPLE & RIDGE INTERSECTION IMPROVEMENTS

FEDERAL AID PROJECT

WICHITA, SEDGWICK COUNTY, KANSAS
POPULATION = 335,562
CITY OF WICHITA PROJECT NO. 472-84258
CITY OF WICHITA O.C.A. NO. 706927

KDOT PROJ. NO. 87 N-0307-01
F.A. NO. STP N030 (701)
OVERLAY
GRADING AND SURFACING
STORM SEWER
SIGNALIZATION
PAVEMENT MARKING
SEEDING



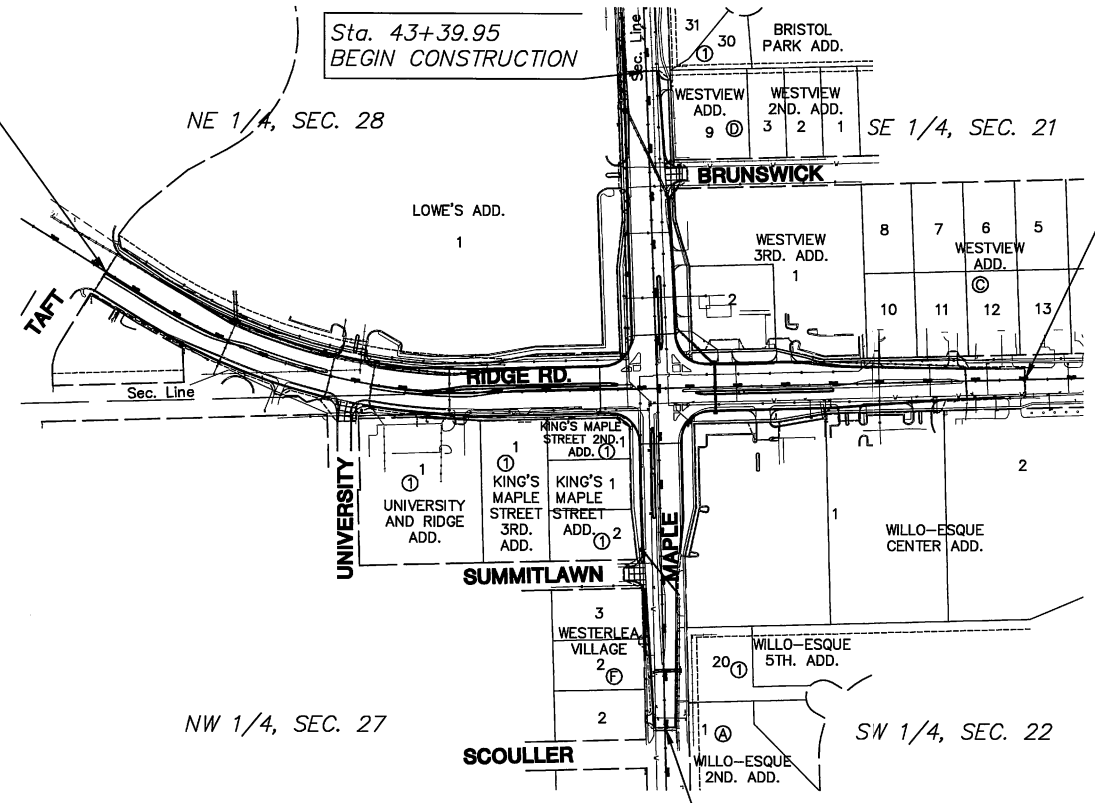
2004 DAILY TRAFFIC

DESIGN DESIGNATION

AADT (2002)	=	24,470
AADT (2030)	=	29,364
DHV	=	10 %
D	=	60 %
T	=	3 %
V	=	40 M.P.H.
Control of Access	=	NONE
Clear Zone	=	6 FT.

CONVENTIONAL SIGNS

COUNTY LINE	CENTER LINE OF PROJECT
CITY LIMITS	TERRACE
STATE OR NATIONAL LINE	CULVERTS
TOWNSHIP, SECTION or GRANT LINE	DROP INLET & STORM SEWER
PROPERTY LINE	ACCESS CONTROL
HIGHWAY FENCE	POWER POLE
EXISTING FENCE	TELEPHONE POLE
GUARD FENCE	MARSH
CONSTRUCTION LIMITS	HEDGE
RIGHT OF WAY LINE	TREES
TRAVELED WAY	PROFILE ELEVATION
RAILROADS	STREAM or CREEK



NW 1/4, SEC. 27

Sta. 57+06.45
END CONSTRUCTION

Sta. 34+02.59
END
Proj. 87 N-0307-01

Sta. 43+39.95
BEGIN CONSTRUCTION

GROSS LENGTH OF PROJECT	1,864.05	FT.
EXCEPTIONS	0.00	FT.
ADDITIONS	0.00	FT.
NET LENGTH OF PROJECT	1,864.05	FT.
NET LENGTH OF BRIDGES	0.00	FT.
NET LENGTH OF ROAD	1,864.05	FT.

NOTE:
TWO WAY TRAFFIC TO BE CARRIED THROUGH CONSTRUCTION. LOCAL TRAFFIC WILL BE PERMITTED TO ADJACENT PROPERTIES.

PREPARED & SUBMITTED BY

MKEC ENGINEERING CONSULTANTS, INC.
WICHITA, KANSAS



APPROVED - DATE

JIM ARMOUR, P.E.
CITY ENGINEER
PROJECT NO. 87 N-0307-01

RECOM. FOR APPROVAL-DATE

CHIEF, BUREAU OF TRAFFIC ENGINEERING
KANSAS DEPARTMENT OF TRANSPORTATION

APPROVED - DATE

STATE TRANSPORTATION ENGINEER
KANSAS DEPARTMENT OF TRANSPORTATION