

STATE	PROJECT NO.	YEAR	SHEET NO.	TOTAL SHEETS
KANSAS	87 N-0307-01	2006	1	89

INDEX OF SHEETS

SHEET NO	DESCRIPTION
1	TITLE SHEET
2-3	TYPICAL SECTIONS
4-10	PLAN SHEETS
11-13	STORM SEWER PROFILES
14-15	INTERSECTION PLANS
16-22	PAVEMENT REPAIR PLANS
23-32	PAVING DETAILS
27	NOT USED
33-42	INLET & MANHOLE DETAILS
43	MISCELLANEOUS DETAILS
44	SUMMARY OF QUANTITIES
45-48	SOIL EROSION DETAILS
49-53	TRAFFIC SIGNAL PLAN & DETAILS
54-57	PAVEMENT MARKING & SIGNING PLANS
58	CONSTRUCTION SEQUENCING
59-71	TRAFFIC CONTROL PLANS
64 & 65	NOT USED
72-89	CROSS SECTIONS

STATE OF KANSAS
DEPARTMENT OF TRANSPORTATION



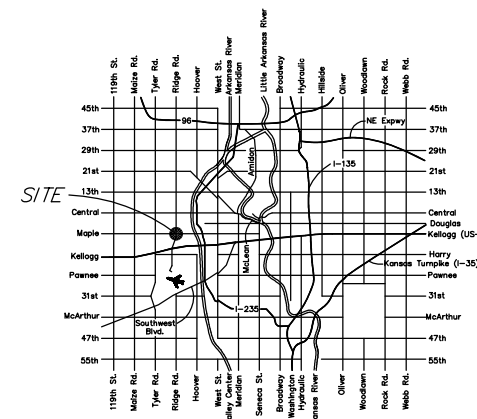
PLAN AND PROFILE OF PROPOSED
MAPLE & RIDGE INTERSECTION IMPROVEMENTS

FEDERAL AID PROJECT

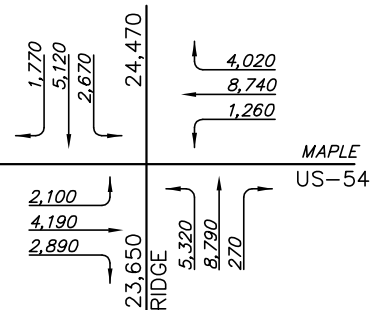
WICHITA, SEDGWICK COUNTY, KANSAS
POPULATION = 335,562
CITY OF WICHITA PROJECT NO. 472-84258
CITY OF WICHITA O.C.A. NO. 706927

KDOT PROJ. NO. 87 N-0307-01
F.A. NO. STP N030 (701)
OVERLAY
GRADING AND SURFACING
STORM SEWER
SIGNALIZATION
PAVEMENT MARKING
SEEDING

SCALE: 1"=200'



LOCATION MAP



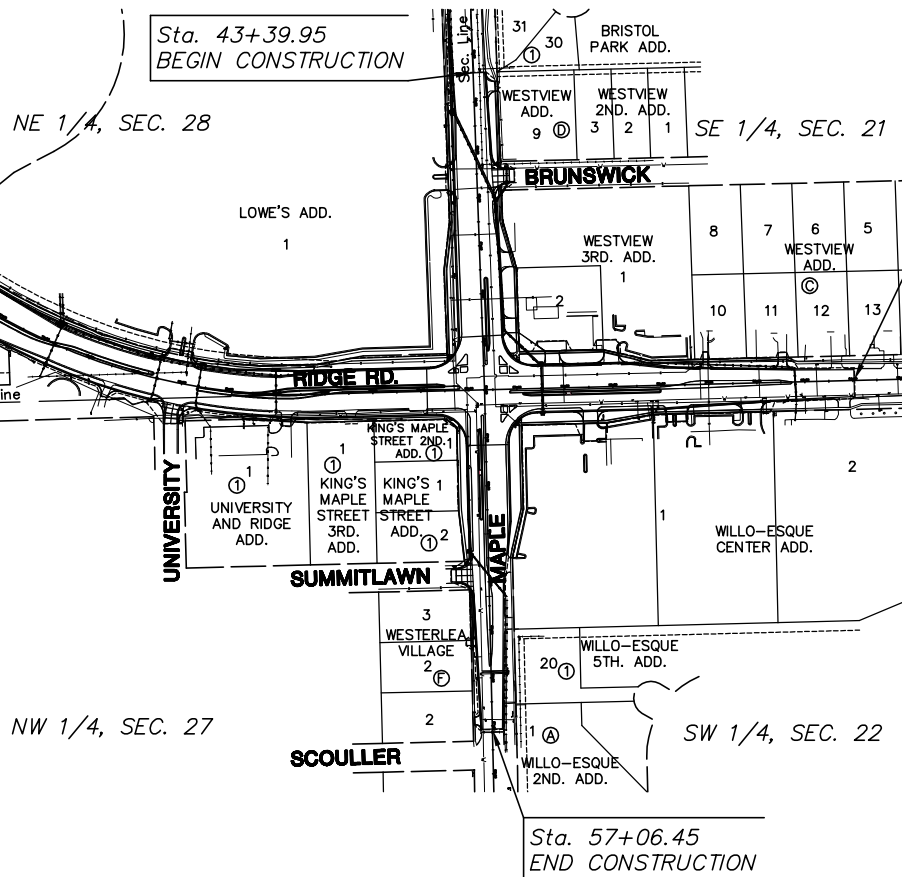
2004 DAILY TRAFFIC

DESIGN DESIGNATION

AADT (2002)	=	24,470
AADT (2030)	=	29,364
DHV	=	10 %
D	=	60 %
T	=	3 %
V	=	40 M.P.H.
Control of Access	=	NONE
Clear Zone	=	6 FT.

CONVENTIONAL SIGNS

COUNTY LINE	_____	CENTER LINE OF PROJECT	_____
CITY LIMITS	=====	TERRACE	_____
STATE OR NATIONAL LINE	-----	CULVERTS	_____
TOWNSHIP, SECTION or GRANT LINE	-----	DROP INLET & STORM SEWER	_____
PROPERTY LINE	_____	ACCESS CONTROL	_____
HIGHWAY FENCE	=====	POWER POLE	_____
EXISTING FENCE	-----	TELEPHONE POLE	_____
GUARD FENCE	=====	MARSH	_____
CONSTRUCTION LIMITS	-----	HEDGE	_____
RIGHT OF WAY LINE	-----	TREES	_____
TRAVELED WAY	=====	PROFILE ELEVATION	_____
RAILROADS	-----	STREAM or CREEK	_____



GROSS LENGTH OF PROJECT	1,864.05 FT.
EXCEPTIONS	0.00 FT.
ADDITIONS	0.00 FT.
NET LENGTH OF PROJECT	1,864.05 FT.
NET LENGTH OF BRIDGES	0.00 FT.
NET LENGTH OF ROAD	1,864.05 FT.

NOTE:
TWO WAY TRAFFIC TO BE CARRIED THROUGH CONSTRUCTION. LOCAL TRAFFIC WILL BE PERMITTED TO ADJACENT PROPERTIES.

PREPARED & SUBMITTED BY

MKEC ENGINEERING CONSULTANTS, INC.
WICHITA, KANSAS

APPROVED - DATE

JIM ARMOUR, P.E.
CITY ENGINEER
PROJECT NO. 87 N-0307-01

RECOM. FOR APPROVAL-DATE

CHIEF, BUREAU OF TRAFFIC ENGINEERING
KANSAS DEPARTMENT OF TRANSPORTATION

APPROVED - DATE

STATE TRANSPORTATION ENGINEER
KANSAS DEPARTMENT OF TRANSPORTATION