

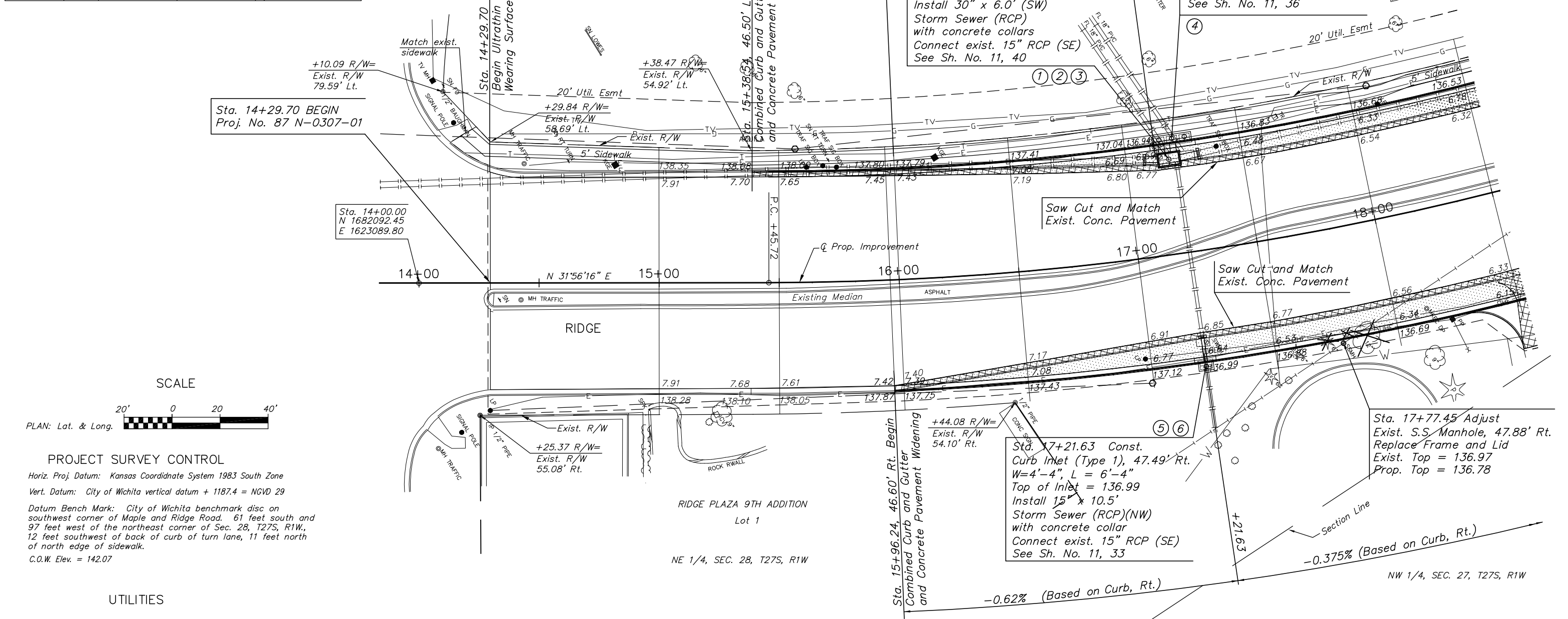
CONTROL POINTS				
Station	Side	Northing	Easting	Remarks
RIDGE RD.				
14+10.03	LT	1682143.1100	1623027.4847	1/2" BAUGHMAN
14+25.37	RT	1682084.8400	1623149.9647	1/2" I.P.
16+44.08	RT	1682276.6700	1623263.5847	1/2" I.P.
20+14.08	RT	1682638.7300	1623399.0047	1/2" I.P.
21+32.77	RT	1682763.3400	1623406.0647	5/8" BAR
24+00.42	RT	1683037.0200	1623409.3947	5/8" AM CAP
25+52.32	RT	1683188.8800	1623405.5847	5/8" AM CAP
27+07.37	RT	1683344.2700	1623418.0947	3/4" PIPE
28+82.38	RT	1683519.2300	1623413.7547	3/4" PEC PIPE
29+82.63	RT	1683619.0700	1623396.2947	3/4" PIPE
MAPLE				
46+47.77	LT	1683305.0400	1622991.0347	1/2" PIPE
47+47.97	LT	1683333.3400	1623090.2847	1/2" SPIKE
50+78.82	RT	1683209.3400	1623425.0647	5/8" AM CAP
51+44.75	RT	1683210.8800	1623490.9747	5/8" AM CAP
57+90.56	RT	1683246.4200	1624136.1347	1/2" PIPE

P.O.T. Sta. 14+00.00 = $\frac{1}{2}$ Sta. 14+64.36, 285.13' Lt.
 1. Not Set
 2. N = 1682092.45, E = 1623089.80

CURVE DATA
 P.I. Sta. 19+17.84 (Bk)=
 P.I. Sta. 18+96.64 (Ahd.)
 $\Delta = 33'24'31"$ Lt.
 R = 1240.00'
 L = 723.03'
 T = 372.12'
 E = 54.63'
 Super = None

P.C. Sta. 15+45.72 = $\frac{1}{2}$ Sta. 15+86.01, 204.89' Lt.
 1. Not Set
 2. N = 1682216.11, E = 1623166.89

STATE	PROJECT NO.	YEAR	SHEET NO.	TOTAL SHEETS
KANSAS	87 N-0307-01	2006	4	89



Sta. 14+29.70 BEGIN
 Proj. No. 87 N-0307-01

Sta. 14+00.00
 N 1682092.45
 E 1623089.80

Sta. 17+18.36 Const.
 Reinf. Conc. M.H., 39.55' Lt.
 W=6'-0" L=9'-6"
 Manhole Top = 136.59
 Install 30" x 8.4' (NE)
 Install 30" x 6.0' (SW)
 Storm Sewer (RCP)
 with concrete collars
 Connect exist. 15" RCP (SE)
 See Sh. No. 11, 40

Sta. 17+20.82 Const.
 Curb Inlet (Type 1), 47.53' Lt.
 W=4'-4" L=16'-4"
 Top of Inlet = 136.92
 Install 2-30" x 4.0'
 Storm Sewer (RCP)(SE)
 Connect exist. 2-18" PVC (W)
 See Sh. No. 11, 36

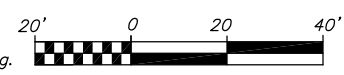
Saw Cut and Match
 Exist. Conc. Pavement

Saw Cut and Match
 Exist. Conc. Pavement

Sta. 17+21.63 Const.
 Curb Inlet (Type 1), 47.49' Rt.
 W=4'-4", L = 6'-4"
 Top of Inlet = 136.99
 Install 15" x 10.5'
 Storm Sewer (RCP)(NW)
 with concrete collar
 Connect exist. 15" RCP (SE)
 See Sh. No. 11, 33

Sta. 17+77.45 Adjust
 Exist. S.S. Manhole, 47.88' Rt.
 Replace Frame and Lid
 Exist. Top = 136.97
 Prop. Top = 136.78

SCALE



PLAN: Lat. & Long.

PROJECT SURVEY CONTROL

Horiz. Proj. Datum: Kansas Coordinate System 1983 South Zone
 Vert. Datum: City of Wichita vertical datum + 1187.4 = NGVD 29
 Datum Bench Mark: City of Wichita benchmark disc on southwest corner of Maple and Ridge Road. 61 feet south and 97 feet west of the northeast corner of Sec. 28, T27S, R1W, 12 feet southwest of back of curb of turn lane, 11 feet north of north edge of sidewalk.
 C.O.W. Elev. = 142.07

UTILITIES

Contractor will be required to provide a minimum advance notice of seventy-two (72) hours to utility companies prior to starting any excavation as follows:

- Kansas One-Call 1-800-344-7233
- Or local (Wichita) 687-2470
- The contractor must notify the following in case of emergency:
- Cox communications (cable) 262-0661
- Westar Energy (electric) 383-8600
- Kansas Gas Service (Gas 2) 832-3101
- SBC (telephone) 800-870-8390
- City of Wichita water & sewer 262-6000
- Aquila (Gas 1) 946-0096

- West Quarter Corner Sec. 27, T. 27 S., R. 1 W.
1. 1/2" pipe in thimble in North shoulder of West bound lane of U.S. Highway 54 (Kellogg).
 2. $\frac{1}{2}$ Sta. 0+00, 0.00' Lt.
 3. Back of curb 7.6' N
 4. Chiseled "X" on storm water inlet 81.0' WSW
 5. N = 1680635.89 E = 1623412.43

BM #5 Chiseled square on Northwest corner of concrete base of traffic signal on Southwest corner of Taft and Ridge Road. $\frac{1}{2}$ Sta. 13+13.93 (Ridge), 60.20' Lt. Elev. = 139.465.

BM #4 Chiseled square on East side of light pole base $\frac{1}{2}$ Sta. 20+80.37 (Ridge), 87.13' Lt. Elev. = 140.40.

LEGEND

- Pavement/Sidewalk Removal
- Concrete Widening
- Tree Removal

J:\Civil\03392\dwg\PAV\03392E1.dwg 7/9/2004 11:12:56 AM CST
 KANSAS DEPARTMENT OF TRANSPORTATION

MAPLE & RIDGE INTERSECTION
 STA. 15+38.54 to STA. 18+50.00
 PROJECT NO. 87 N-0307-01 SEDGWICK CO.
 M K E C ENGINEERING CONSULTANT, INC.
 WICHITA, KANSAS

DESIGNED BY: JRA	CHECKED BY:
DRAWN BY: DPG	DATE: 6-4-04