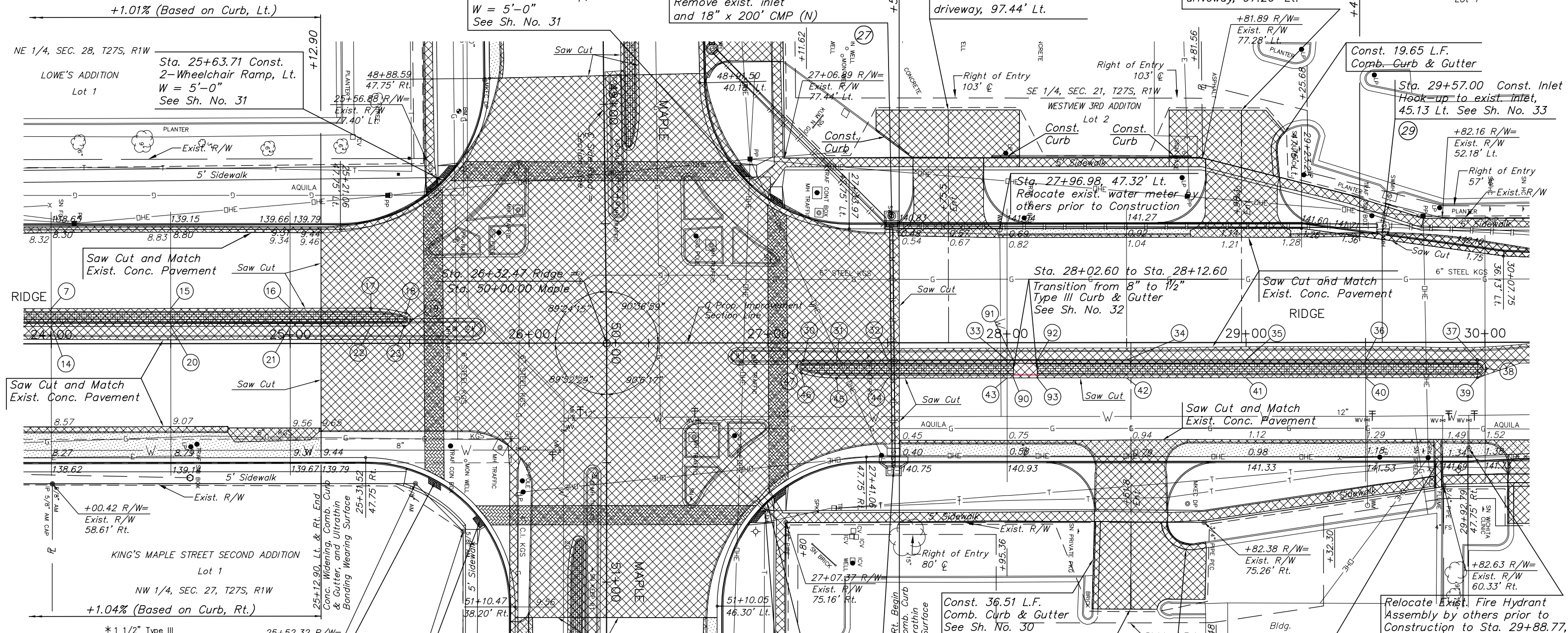


UTILITIES
 Cox communications (cable) 262-0661
 Westar Energy (electric) 383-8600
 Kansas Gas Service (Gas 2) 832-3101
 SBC (telephone) 800-870-8390
 City of Wichita water & sewer 262-6000
 Aquila (Gas 1) 946-0096

P.I. Sta. 26+32.47 = P.I. § Sta. 26+32.47, 0.00' Lt.
 SW Cor. Sec. 22, T27S, R1W
 1. 5/8" bar and MKEC cap in hole cored for thimble
 2. N = 1683267.49, E = 1623344.85
 NOTE: See Sh. 14 for brick paver crosswalk details at intersection

Sta. 27+51.78 Const.
 Curb Inlet (Type II, Special), 51.43' Lt.
 W=7'-4 3/8", L=6'-2 1/2"
 Inlet Top = 140.83
 Install 18" x 201.00'
 Storm Sewer (RCP)(N)
 See Sh. No. 12, 38
 Remove exist. inlet and 18" x 200' CMP (N)

STATE	PROJECT NO.	YEAR	SHEET NO.	TOTAL SHEETS
KANSAS	87 N-0307-01	2006	6	89



* 1 1/2" Type III

PT. NO.	STATION	OFFSET	HIGH EDGE	TOP CURB
30	27+14.70	7.25' Rt.	141.51	142.18
31	27+28.55	7.25' Rt.	141.55	142.22
32	27+50.00	7.25' Rt.	141.62	142.29
33	28+00.00	7.25' Rt.	141.75	142.42
34	28+50.00	7.25' Rt.	141.95	* 142.08
35	29+00.00	7.25' Rt.	141.13	* 142.26
36	29+50.00	7.25' Rt.	142.39	* 142.52
37	29+96.76	7.25' Rt.	142.60	* 142.73
38	30+00.48	10.97' Rt.	142.35	* 142.48
39	29+96.82	14.75' Rt.	142.10	* 142.23
40	29+50.00	14.75' Rt.	141.88	* 142.01
41	29+00.00	14.75' Rt.	141.66	* 141.79
42	28+50.00	14.75' Rt.	141.59	* 141.72
43	28+00.00	14.75' Rt.	141.25	141.92
44	27+50.00	14.75' Rt.	141.15	141.82
45	27+28.55	14.75' Rt.	141.16	141.83
46	27+13.92	12.64' Rt.	141.38	142.05
47	27+11.98	9.61' Rt.	141.45	142.12
48	27+02.60	13.00' Rt.	141.25	141.92
49	28+02.60	9.00' Rt.	141.75	142.42
50	28+12.60	9.00' Rt.	141.78	* 141.91
51	28+12.60	13.00' Rt.	141.28	* 141.41

PT. NO.	STATION	OFFSET	HIGH EDGE	TOP CURB
7	24+00.00	14.75' Lt.	138.97	139.64
15	24+50.00	14.75' Lt.	139.48	140.15
16	25+00.00	14.75' Lt.	140.02	140.69
17	25+33.78	14.75' Lt.	140.39	141.06
18	25+48.41	12.64' Lt.	140.72	141.39
19	25+50.36	9.61' Lt.	140.78	141.45
20	24+00.00	7.25' Lt.	139.43	140.10
21	24+50.00	7.25' Lt.	139.95	140.62
22	25+00.00	7.25' Lt.	140.47	141.14
23	25+33.78	7.25' Lt.	140.78	141.45
24	25+47.63	7.25' Lt.	140.82	141.49

Sta. 25+79.60 Const.
 Wheelchair Ramp, Rt.
 W = 5'-0"
 See Sh. No. 31

Relocate Exist. Fire Hydrant
 Assembly by others prior to
 Construction to Sta. 26+94.72
 78.9' Rt.

Sta. 27+00.00 Const.
 2-Wheelchair Ramp, Rt.
 W = 5'-0"
 See Sh. No. 31

Southwest Corner Sec. 22, T. 27 S., R. 1 W.
 1. 5/8" bar and MKEC cap in hole cored for thimble.
 2. § Sta. 26+32.47, 0.00' Lt. = § Sta. 26+32.47, 0.00' Lt.
 3. Center of City of Wichita Benchmark disc. 115.10' SW
 4. 3/4" pipe at the S.W. cor. of Lot 1,
 Willo-Esque Center Addition 106.12' NE
 5. Chiseled "x" on nose of median 53.66' N
 6. N = 1683267.49 E = 1623344.85

BM #1 City of Wichita benchmark disc on Southwest
 corner of Maple and Ridge Road.
 § Sta. 25+70.75 (Ridge), 97.16' Lt. Elev. = 142.07.

Sta. 27+52.46 Const.
 Curb Inlet (Type IA), 53.42' Rt.
 W = 4'-4", L = 6'-4"
 Top Inlet = 140.75
 Install 15" x 100.4'
 Storm Sewer (RCP)(W)
 See Sh. No. 12, 34
 Remove exist. inlet and
 15" x 95.0' CMP (W)

WILLO-ESQUE CENTER ADDITION
 Lot 1
 SW 1/4, SEC. 22, T27S, R1W

LEGEND

	Pavement/Sidewalk Removal
	Concrete Widening
	Adjust Water Valve See Table on Sheet 7

KANSAS DEPARTMENT OF TRANSPORTATION
 MAPLE & RIDGE INTERSECTION
 STA. 24+00.00 to STA. 30+00.00
 PROJECT NO. 87 N-0307-01 SEDGWICK CO.
 M K E C ENGINEERING CONSULTANT, INC.
 WICHITA, KANSAS

DESIGNED BY: JRA	CHECKED BY:
DRAWN BY: DPG	DATE: 6-4-04

SHEET 6 OF 89