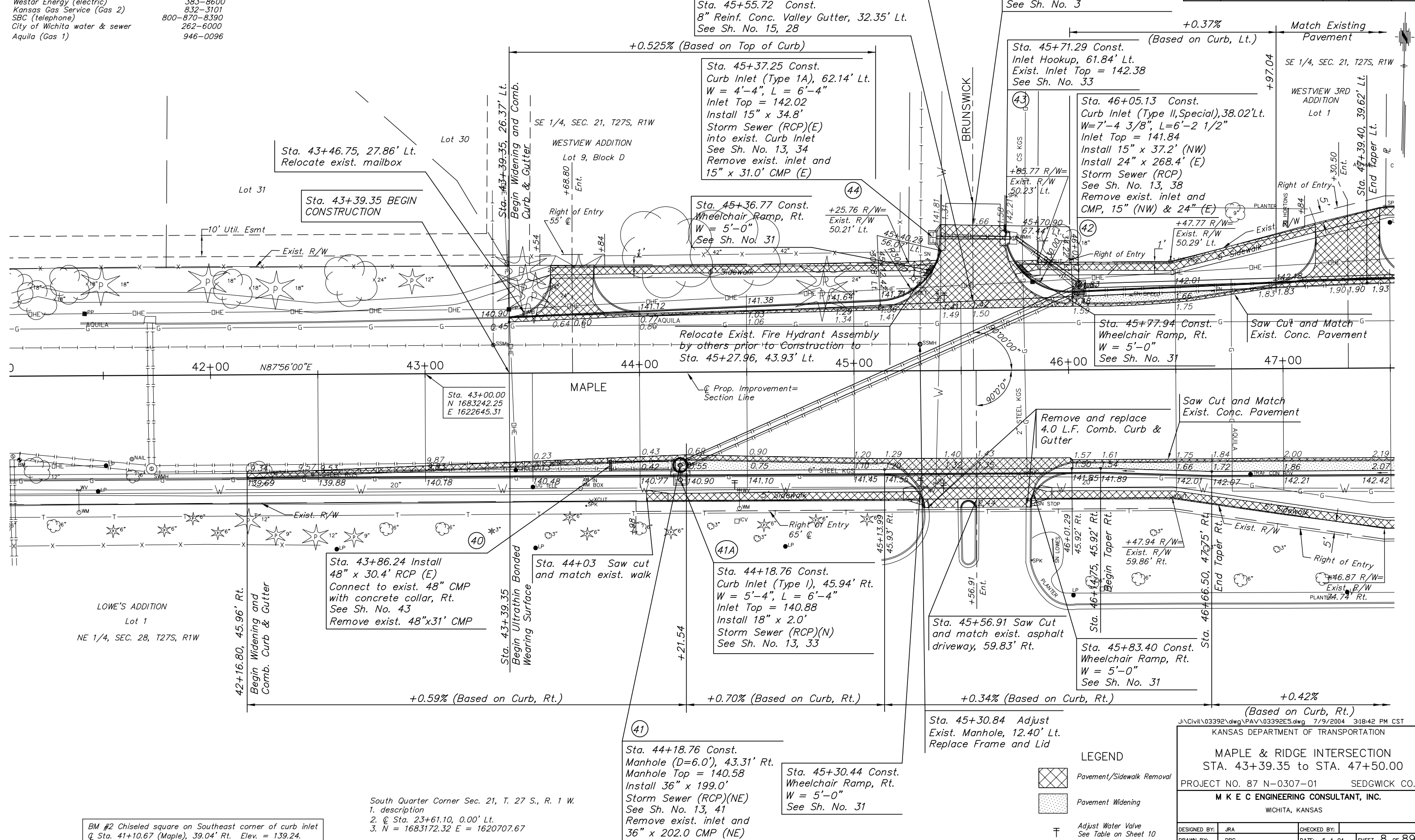


UTILITIES

Cox communications (cable) 262-0661
 Westar Energy (electric) 383-8600
 Kansas Gas Service (Gas 2) 832-3101
 SBC (telephone) 800-870-8390
 City of Wichita water & sewer 262-6000
 Aquila (Gas 1) 946-0096

P.O.T. Sta. 43+00.00
 1. Not Set
 2. N 1683242.25, E 1622645.31

STATE	PROJECT NO.	YEAR	SHEET NO.	TOTAL SHEETS
KANSAS	87 N-0307-01	2006	8	89



BM #2 Chiseled square on Southeast corner of curb inlet
 @ Sta. 41+10.67 (Maple), 39.04' Rt. Elev. = 139.24.

South Quarter Corner Sec. 21, T. 27 S., R. 1 W.
 1. description
 2. @ Sta. 23+61.10, 0.00' Lt.
 3. N = 1683172.32 E = 1620707.67

LEGEND

Pavement/Sidewalk Removal

Pavement Widening

Adjust Water Valve
 See Table on Sheet 10

J:\Civil\03392\dwg\PAV\03392E5.dwg 7/9/2004 3:18:42 PM CST
 KANSAS DEPARTMENT OF TRANSPORTATION

MAPLE & RIDGE INTERSECTION
 STA. 43+39.35 to STA. 47+50.00

PROJECT NO. 87 N-0307-01 SEDGWICK CO.
M K E C ENGINEERING CONSULTANT, INC.
 WICHITA, KANSAS

DESIGNED BY: JRA	CHECKED BY:
DRAWN BY: DPG	DATE: 6-4-04

SHEET 8 OF 89