

UTILITIES

Cox communications (cable)  
Westar Energy (electric)  
Kansas Gas Service (Gas 2)  
SBC (telephone)  
City of Wichita water & sewer  
Aquila (Gas 1)

262-0661  
383-8600  
832-3101  
800-870-8390  
262-6000  
946-0096

SE 1/4, SEC. 21, T27S, R1W

P.I. Sta. 50+00.00 (Maple) = C Sta. 26+32.47 (Ridge), 0.00' Lt.

SW Cor. Sec. 22, T27S, R1W

- 5/8" bar and MKEC cap in hole cored for thimble.
- N = 1683267.49, E = 1623344.85

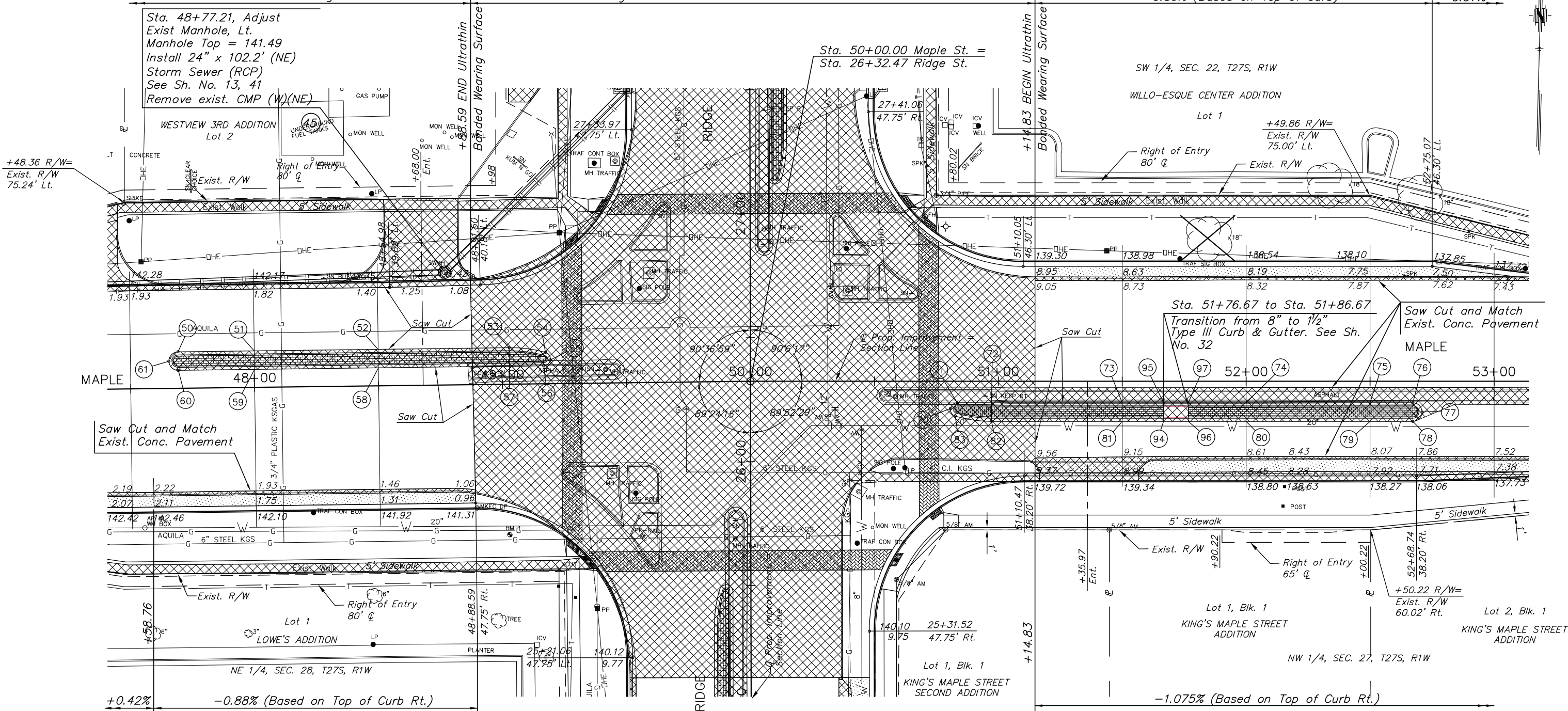
STATE	PROJECT NO.	YEAR	SHEET NO.	TOTAL SHEETS
KANSAS	87 N-0307-01	2006	9	89

Match Existing Pavement

See Ridge Intersection Sheet for additional information

-0.89% (Based on Top of Curb)

-0.57%



PT. NO.	STATION	OFFSET	HIGH EDGE	TOP CURB
50	47+69.26	14.75' Lt.	142.50	143.17
51	48+00.00	14.75' Lt.	142.33	143.00
52	48+50.00	14.75' Lt.	141.93	142.60
53	49+02.84	14.75' Lt.	141.58	142.25
54	49+17.48	12.64' Lt.	141.59	142.26
55	49+19.42	9.61' Lt.	141.60	142.27
56	49+16.70	7.25' Lt.	141.61	142.28
57	49+02.84	7.25' Lt.	141.68	142.35
58	48+50.00	7.25' Lt.	142.09	142.76
59	48+00.00	7.25' Lt.	142.51	143.18
60	47+69.26	7.25' Lt.	142.70	143.37
61	47+65.51	11.00' Lt.	142.62	143.29

MEDIAN LOCATION				
PT. NO.	STATION	OFFSET	HIGH EDGE	TOP CURB
70	50+80.70	11.06' Rt.	140.33	140.33
71	50+83.42	8.70' Rt.	140.36	140.36
72	50+97.27	8.70' Rt.	140.25	140.25
73	51+50.00	8.70' Rt.	139.73	139.73
74	52+00.00	8.70' Rt.	139.28	* 139.41
75	52+50.00	8.70' Rt.	138.84	* 138.97
76	52+67.28	8.70' Rt.	138.69	* 138.82
77	52+70.96	12.45' Rt.	138.51	* 138.64
78	52+67.21	16.20' Rt.	138.32	* 138.45
79	52+50.00	16.20' Rt.	138.47	* 138.60
80	52+00.00	16.20' Rt.	138.93	* 139.06
81	51+50.00	1.620' Rt.	139.44	139.44
82	50+97.27	16.20' Rt.	140.06	140.06
83	50+82.64	14.09' Rt.	140.25	140.25
94	51+76.67	14.45' Rt.	139.27	139.27
95	51+76.67	10.45' Rt.	139.58	139.58
96	51+86.67	10.45' Rt.	139.17	* 139.30
97	51+86.67	14.45' Rt.	139.49	* 139.62

BM #1 City of Wichita benchmark disc on Southwest corner of Maple and Ridge Road.  
C Sta. 49+02.20 (Maple), 60.70' Rt. Elev. = 142.07.

- Southwest Corner Sec. 22, T. 27 S., R. 1 W.
- 5/8" bar and MKEC cap in hole cored for thimble.
  - C Sta. 50+00.00 (Maple), 0.00' Lt. = C Sta. 26+32.47 (Ridge), 0.00' Lt.
  - Center of City of Wichita Benchmark disc. 115.10' SW
  - 3/4" pipe at the S.W. cor. of Lot 1, Willa-Esque Center Addition 106.12' NE
  - Chiseled "x" on nose of median 53.66' N
  - N = 1683267.49 E = 1623344.85

**LEGEND**

- Pavement/Sidewalk Removal
- Pavement Widening
- Adjust Water Valve See Table on Sheet 10

J:\Civil\03392\dwg\PAV\03392E6.dwg 7/13/2004 11:41:18 AM CST  
KANSAS DEPARTMENT OF TRANSPORTATION  
**MAPLE & RIDGE INTERSECTION**  
STA. 47+50.00 to STA. 53+00.00  
PROJECT NO. 87 N-0307-01 SEDGWICK CO.  
**M K E C ENGINEERING CONSULTANT, INC.**  
WICHITA, KANSAS

DESIGNED BY: JRA	CHECKED BY:
DRAWN BY: DPG	DATE: 6-4-04

SHEET 9 OF 89