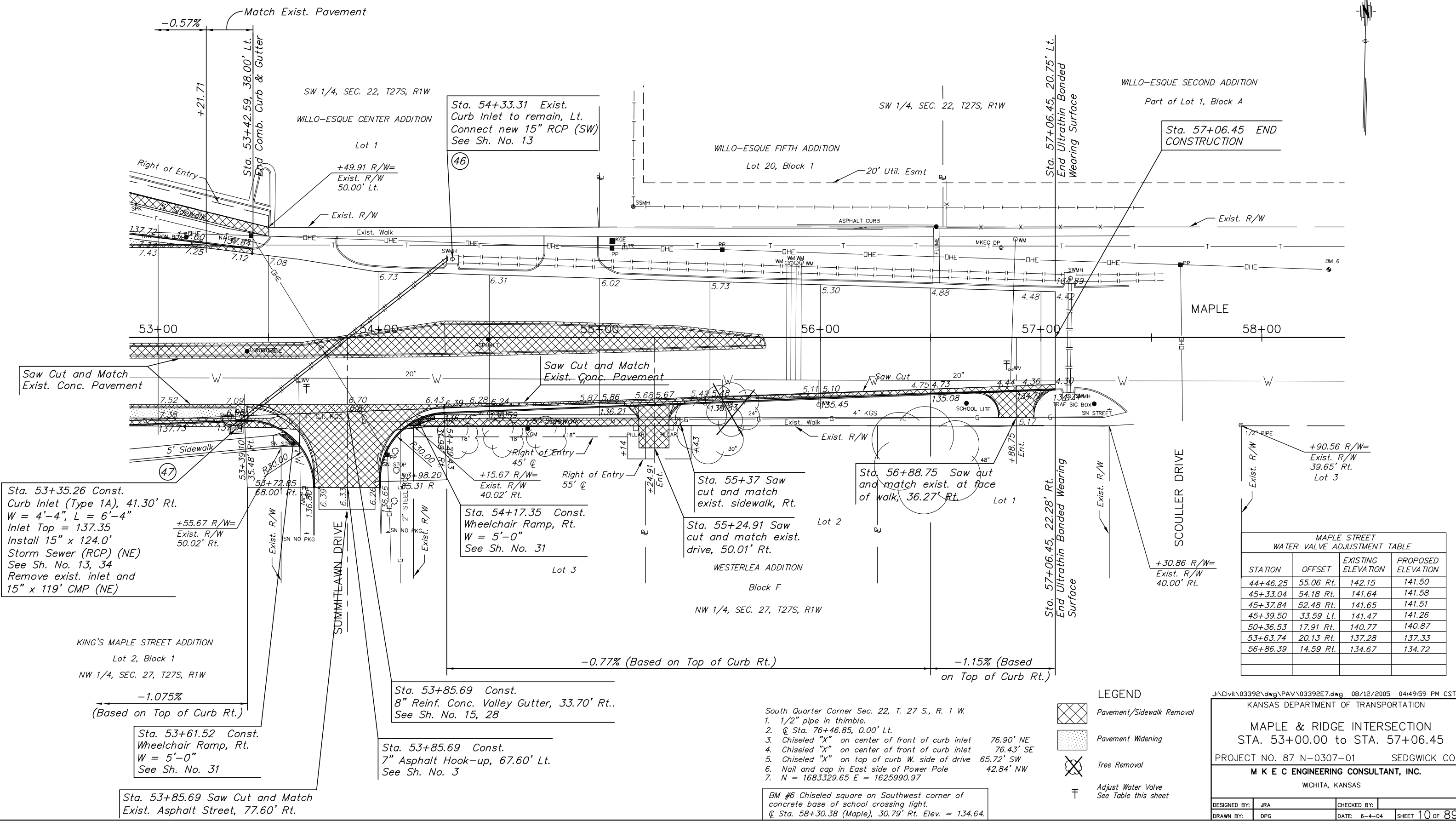


**UTILITIES**

Cox communications (cable) 262-0661  
 Westar Energy (electric) 383-8600  
 Kansas Gas Service (Gas 2) 832-3101  
 SBC (telephone) 800-870-8390  
 City of Wichita water & sewer 262-6000  
 Aquila (Gas 1) 946-0096

P.I. Sta. 76+46.85 =  
 S 1/4 Corner Sec. 22, T. 27 S., R. 1 W.  
 1. 1/2" pipe in thimble.  
 2. N = 1683329.65 E = 1625990.97

STATE	PROJECT NO.	YEAR	SHEET NO.	TOTAL SHEETS
KANSAS	87 N-0307-01	2006	10	89



Sta. 53+35.26 Const.  
 Curb Inlet (Type 1A), 41.30' Rt.  
 W = 4'-4", L = 6'-4"  
 Inlet Top = 137.35  
 Storm Sewer (RCP) (NE)  
 See Sh. No. 13, 34  
 Remove exist. inlet and  
 15" x 119' CMP (NE)

KING'S MAPLE STREET ADDITION  
 Lot 2, Block 1  
 NW 1/4, SEC. 27, T27S, R1W  
 -1.075%  
 (Based on Top of Curb Rt.)

Sta. 53+61.52 Const.  
 Wheelchair Ramp, Rt.  
 W = 5'-0"  
 See Sh. No. 31

Sta. 53+85.69 Saw Cut and Match  
 Exist. Asphalt Street, 77.60' Rt.

Sta. 53+85.69 Const.  
 8" Reinf. Conc. Valley Gutter, 33.70' Rt.  
 See Sh. No. 15, 28

Sta. 53+85.69 Const.  
 7" Asphalt Hook-up, 67.60' Lt.  
 See Sh. No. 3

Sta. 54+17.35 Const.  
 Wheelchair Ramp, Rt.  
 W = 5'-0"  
 See Sh. No. 31

Sta. 55+24.91 Saw cut  
 and match exist.  
 drive, 50.01' Rt.

Sta. 55+37 Saw cut  
 and match  
 exist. sidewalk, Rt.

Sta. 56+88.75 Saw cut  
 and match exist. at face  
 of walk, 36.27' Rt.

Sta. 54+33.31 Exist.  
 Curb Inlet to remain, Lt.  
 Connect new 15" RCP (SW)  
 See Sh. No. 13

Sta. 57+06.45 END  
 CONSTRUCTION

MAPLE STREET  
 WATER VALVE ADJUSTMENT TABLE

STATION	OFFSET	EXISTING ELEVATION	PROPOSED ELEVATION
44+46.25	55.06 Rt.	142.15	141.50
45+33.04	54.18 Rt.	141.64	141.58
45+37.84	52.48 Rt.	141.65	141.51
45+39.50	33.59 Lt.	141.47	141.26
50+36.53	17.91 Rt.	140.77	140.87
53+63.74	20.13 Rt.	137.28	137.33
56+86.39	14.59 Rt.	134.67	134.72

**LEGEND**

- Pavement/Sidewalk Removal
- Pavement Widening
- Tree Removal
- Adjust Water Valve See Table this sheet

- South Quarter Corner Sec. 22, T. 27 S., R. 1 W.
- 1/2" pipe in thimble.
  - Q Sta. 76+46.85, 0.00' Lt.
  - Chiseled "X" on center of front of curb inlet 76.90' NE
  - Chiseled "X" on center of front of curb inlet 76.43' SE
  - Chiseled "X" on top of curb W. side of drive 65.72' SW
  - Nail and cap in East side of Power Pole 42.84' NW
  - N = 1683329.65 E = 1625990.97

BM #6 Chiseled square on Southwest corner of  
 concrete base of school crossing light.  
 Q Sta. 58+30.38 (Maple), 30.79' Rt. Elev. = 134.64.

J:\Civil\03392\dwg\PAV\03392E7.dwg 08/12/2005 04:49:59 PM CST  
 KANSAS DEPARTMENT OF TRANSPORTATION  
**MAPLE & RIDGE INTERSECTION**  
 STA. 53+00.00 to STA. 57+06.45  
 PROJECT NO. 87 N-0307-01 SEDGWICK CO.  
**M K E C ENGINEERING CONSULTANT, INC.**  
 WICHITA, KANSAS

DESIGNED BY: JRA	CHECKED BY:
DRAWN BY: DPG	DATE: 6-4-04

SHEET 10 OF 89