

Note:

The Existing Concrete Pavement Jointing shown represents the best information obtainable for design. Joint locations and patterns have been drawn from visual examination and are not necessarily to scale. Mid-Panel Patch locations shall be field located. Proposed pavement repair patches and panel replacement dimensions shown are reliable.

| STATE | PROJECT NO. | YEAR | SHEET NO. | TOTAL SHEETS |
|--------|--------------|------|-----------|--------------|
| KANSAS | 87 N-0307-01 | 2006 | 18 | 89 |

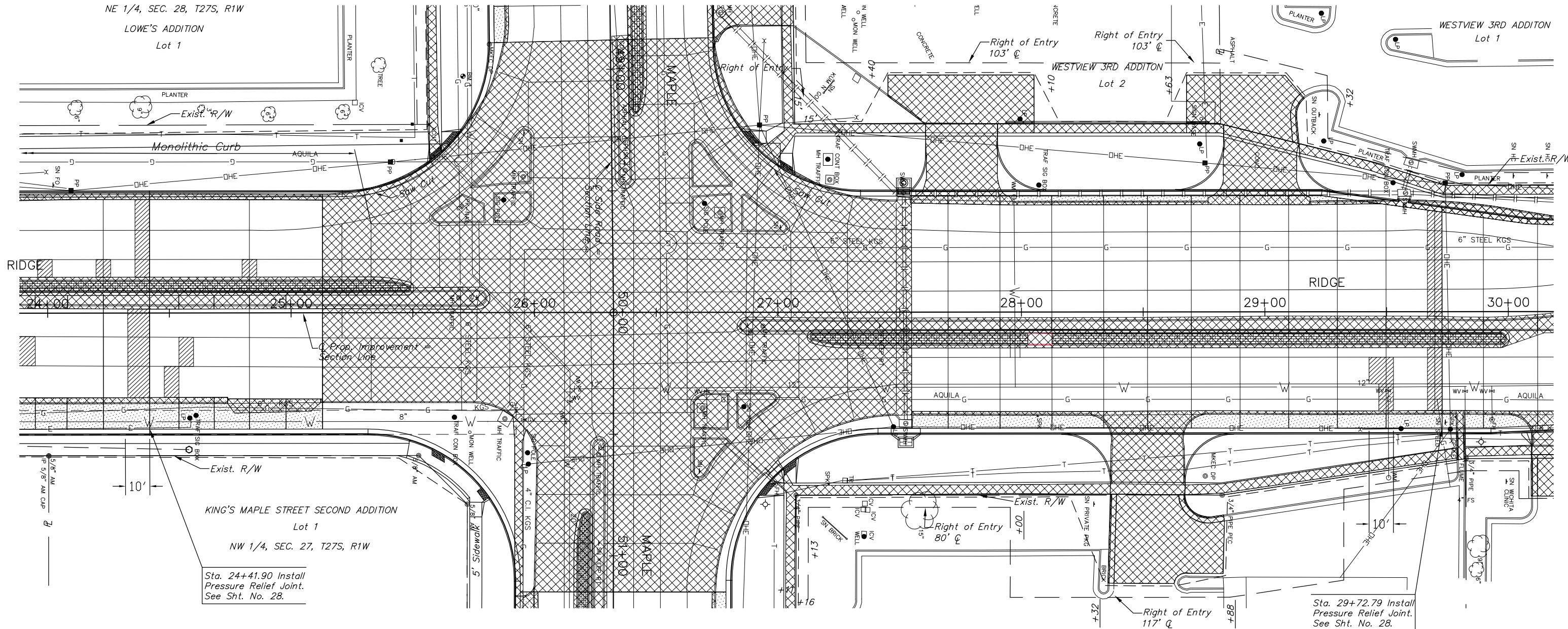


SE 1/4, SEC. 21, T27S, R1W

NE 1/4, SEC. 28, T27S, R1W

LOWE'S ADDITION
Lot 1


WESTVIEW 3RD ADDITION
Lot 1



Sta. 24+41.90 Install
Pressure Relief Joint.
See Sht. No. 28.

Sta. 29+72.79 Install
Pressure Relief Joint.
See Sht. No. 28.

LEGEND

-  Concrete Pavement Patch, Panel Replacement, Partial Panel Replacement, or Full-depth Joint Repair
-  Pavement/Sidewalk Removal
-  Concrete Widening
-  Existing Concrete Pavement Jointing
-  Proposed Concrete Pavement Jointing
-  Tree Removal

WILLO-ESQUE CENTER ADDITION
Lot 1

SW 1/4, SEC. 22, T27S, R1W

J:\Civil\03392\dwg\Repair\03392RP3.dwg 08/12/2005 04:50:21 PM CS

KANSAS DEPARTMENT OF TRANSPORTATION

MAPLE & RIDGE INTERSECTION
STA. 24+00.00 TO STA. 30+00.00

PROJECT NO. 87 N-0307-01 SEDGWICK CO.

M K E C ENGINEERING CONSULTANT, INC.
WICHITA, KANSAS

| | |
|------------------|--------------|
| DESIGNED BY: JRA | CHECKED BY: |
| DRAWN BY: DPG | DATE: 6-4-04 |