

STATE	PROJECT NO.	YEAR	SHEET NO.	TOTAL SHEETS
KANSAS	87 N-0307-01	2006	20	89

SE 1/4, SEC. 21, T27S, R1W

WESTVIEW 3RD ADDITION

Lot 1

SE 1/4, SEC. 21, T27S, R1W

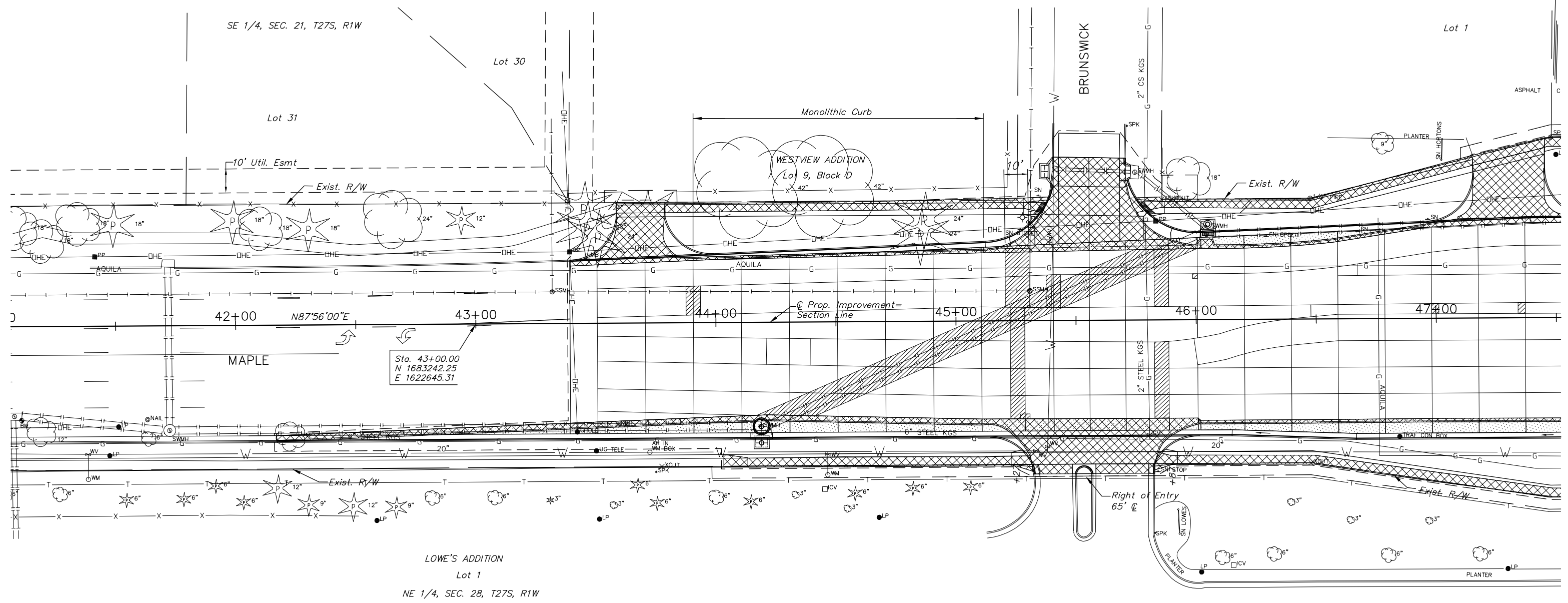
BRUNSWICK

SE 1/4, SEC. 21, T27S, R1W

Lot 30

Lot 31

Note:
The Existing Concrete Pavement Jointing shown represents the best information obtainable for design. Joint locations and patterns have been drawn from visual examination and are not necessarily to scale. Mid-Panel Patch locations shall be field located. Proposed pavement repair patches and panel replacement dimensions shown are reliable.



Sta. 43+00.00
N 1683242.25
E 1622645.31

LOWE'S ADDITION
Lot 1
NE 1/4, SEC. 28, T27S, R1W

LEGEND

-  Concrete Pavement Patch, Panel Replacement, Partial Panel Replacement, or Full-depth Joint Repair
-  Pavement/Sidewalk Removal
-  Concrete Widening
-  Existing Concrete Pavement Jointing
-  Proposed Concrete Pavement Jointing
-  Tree Removal

J:\Civil\03392\dwg\Repair\03392RP5.dwg 08/12/2005 04:50:10 PM CS

KANSAS DEPARTMENT OF TRANSPORTATION
MAPLE & RIDGE INTERSECTION
STA. 43+39.35 to STA. 47+50.00
PROJECT NO. 87 N-0307-01 SEDGWICK CO.
M K E C ENGINEERING CONSULTANT, INC.
WICHITA, KANSAS

DESIGNED BY:	JRA	CHECKED BY:	
DRAWN BY:	DPG	DATE:	6-4-04