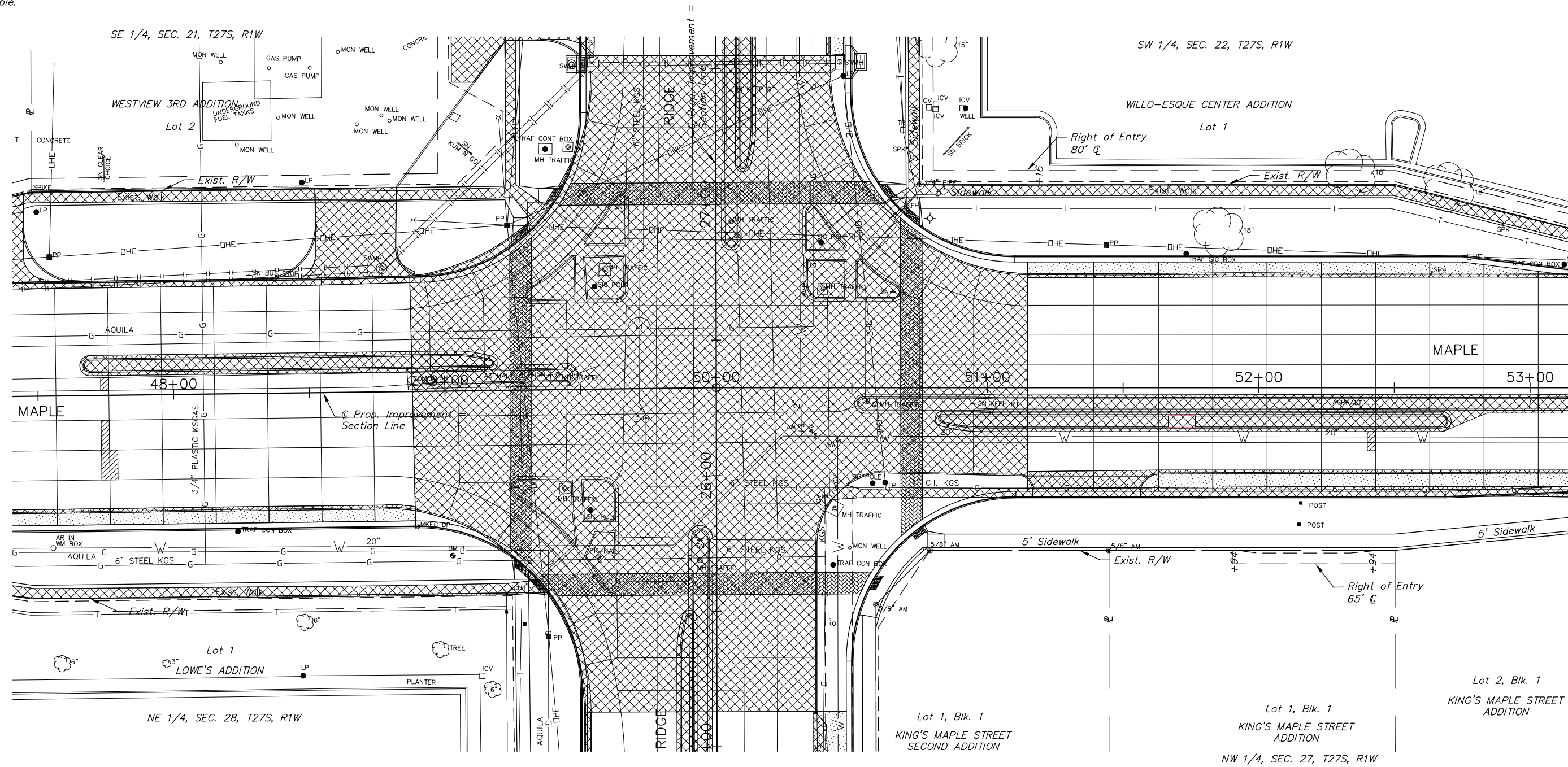


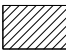



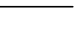

STATE	PROJECT NO.	YEAR	SHEET NO.	TOTAL SHEETS
KANSAS	87 N-0307-01	2006	21	89

Note:

The Existing Concrete Pavement Jointing shown represents the best information obtainable for design. Joint locations and patterns have been drawn from visual examination and are not necessarily to scale. Mid-Panel Patch locations shall be field located. Proposed pavement repair patches and panel replacement dimensions shown are reliable.



LEGEND

-  Concrete Pavement Patch, Panel Replacement, Partial Panel Replacement, or Full-depth Joint Repair
-  Pavement/Sidewalk Removal
-  Concrete Widening
-  Existing Concrete Pavement Jointing
-  Proposed Concrete Pavement Jointing
-  Tree Removal

J:\Civil\03392\dwg\Repair\03392RP6.dwg 08/12/2005 04:50:05 PM C

KANSAS DEPARTMENT OF TRANSPORTATION
 MAPLE & RIDGE INTERSECTION
 STA. 47+50.00 to STA. 53+00.00
 PROJECT NO. 87 N-0307-01 SEDGWICK CO.
 M K E C ENGINEERING CONSULTANT, INC.
 WICHITA, KANSAS

DESIGNED BY: JRA CHECKED BY:
 DRAWN BY: DPG DATE: 6-4-04 SHEET 21 OF 89