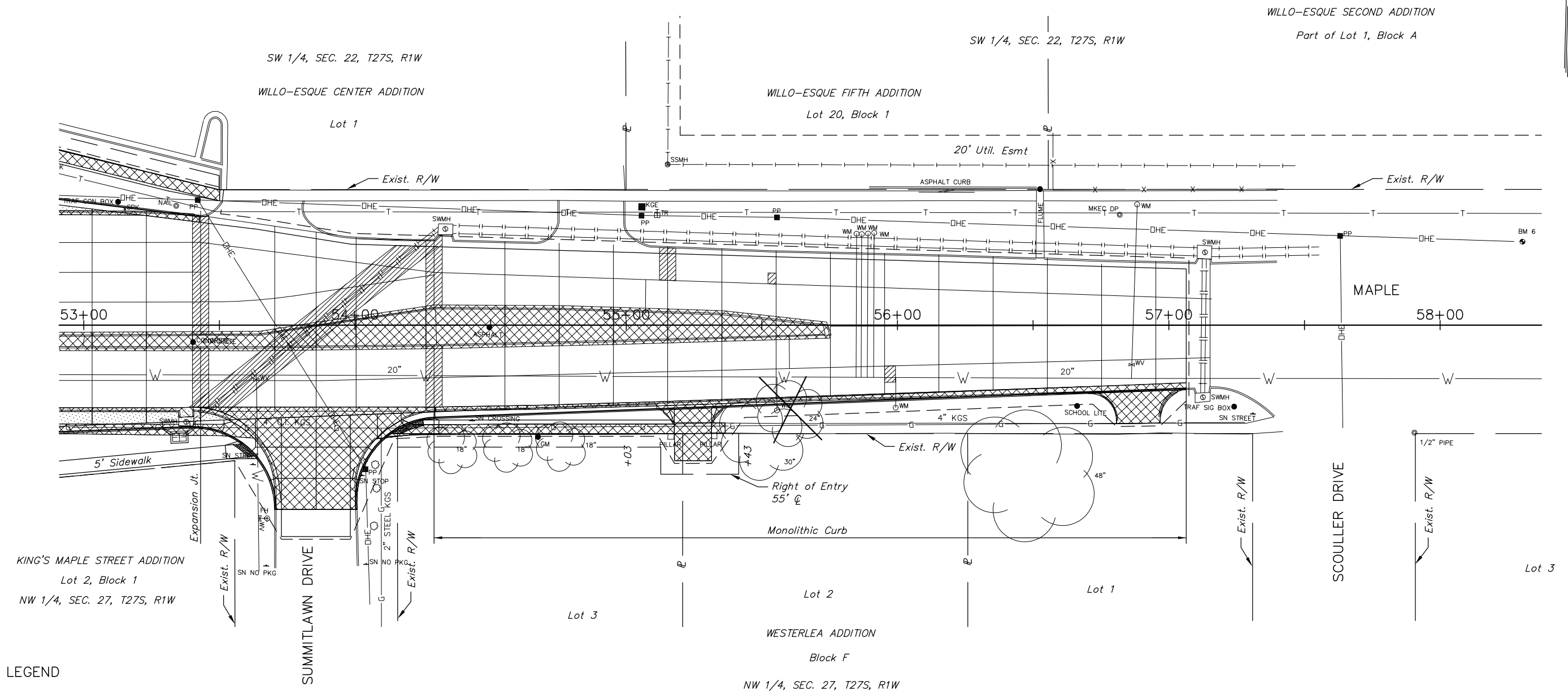


STATE	PROJECT NO.	YEAR	SHEET NO.	TOTAL SHEETS
KANSAS	87 N-0307-01	2006	22	89

Note:
 The Existing Concrete Pavement Jointing shown represents the best information obtainable for design. Joint locations and patterns have been drawn from visual examination and are not necessarily to scale. Mid-Panel Patch locations shall be field located. Proposed pavement repair patches and panel replacement dimensions shown are reliable.



LEGEND

-  Concrete Pavement Patch, Panel Replacement, Partial Panel Replacement, or Full-depth Joint Repair
-  Pavement/Sidewalk Removal
-  Concrete Widening
-  Existing Concrete Pavement Jointing
-  Proposed Concrete Pavement Jointing
-  Tree Removal

J:\Civil\03392\dwg\Repair\03392RP7.dwg 08/22/2005 09:28:12 AM C

KANSAS DEPARTMENT OF TRANSPORTATION

MAPLE & RIDGE INTERSECTION
 STA. 53+00.00 to STA. 57+06.45

PROJECT NO. 87 N-0307-01 SEDGWICK CO.

M K E C ENGINEERING CONSULTANT, INC.
 WICHITA, KANSAS

DESIGNED BY: JRA	CHECKED BY:
DRAWN BY: DPG	DATE: 6-4-04

SHEET 22 OF 89