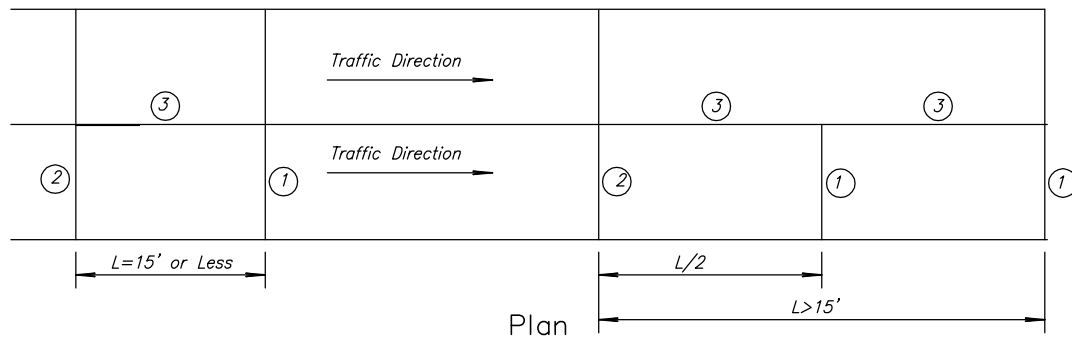


| STATE | PROJECT NO. | YEAR | SHEET NO. | TOTAL SHEETS |
|--------|--------------|------|-----------|--------------|
| KANSAS | 87 N-0307-01 | 2006 | 26 | 89 |

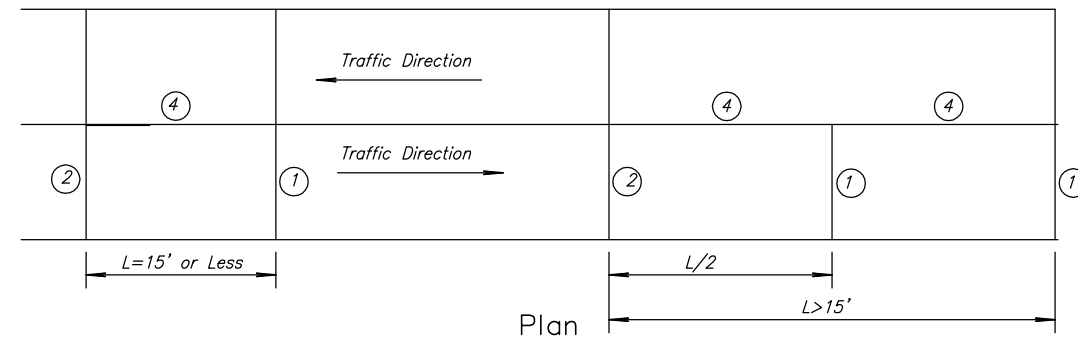
Note:
When practical it should be a general practice to construct slabs the same length as those being repaired. A patch must be at least 6' in length. It can be as long as 15'. If a continuous repair exceeds 15' then the repair should be divided into as many slabs as possible with lengths less than 15'.



- ① - Butt type joint with smooth dowel bars, use bond breaker.
- ② - Butt type joint, use bond breaker.
- ③ - Tied type joint

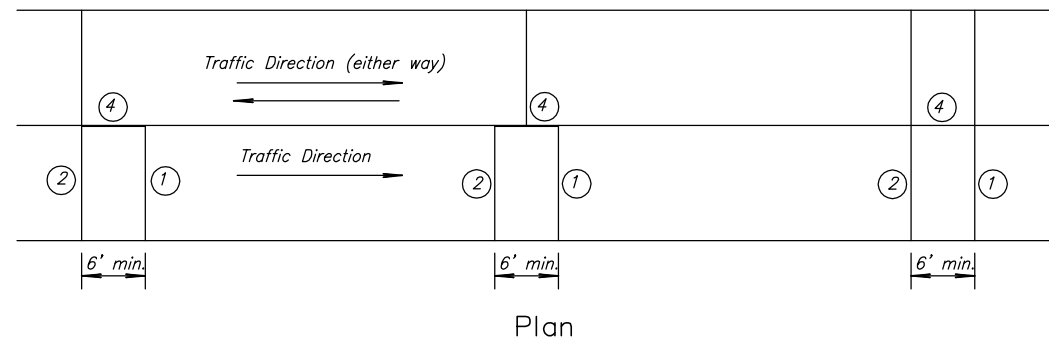
See Alternate Slab Replacement note on this sheet when $L > 15'$.

TYPE ② - Contraction Joint



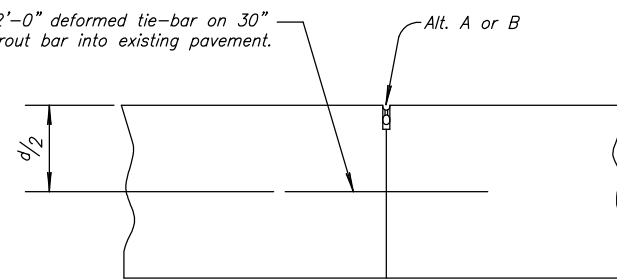
- ① - Butt type joint with smooth dowel bars, use bond breaker.
- ② - Butt type joint, use bond breaker.
- ③ - Tied type joint

See Alternate Slab Replacement note on this sheet when $L > 15'$.

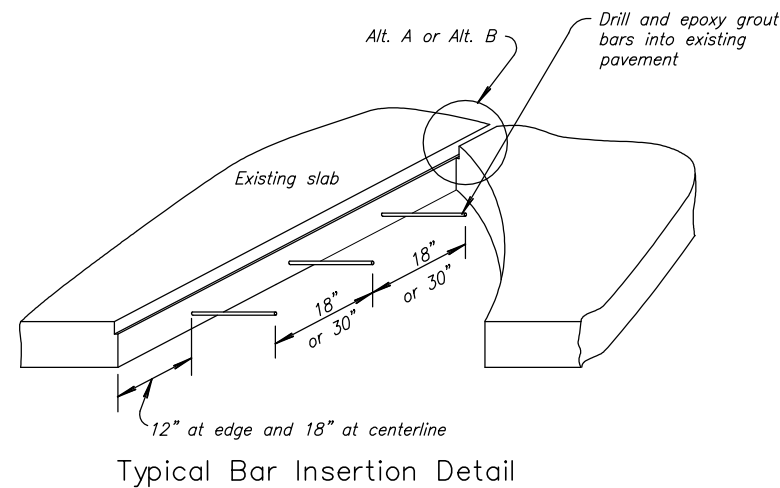


- ① - Butt type joint with smooth dowel bars, use bond breaker.
- ② - Butt type joint, use bond breaker.
- ③ - Butt type joint (lanes poured separately).

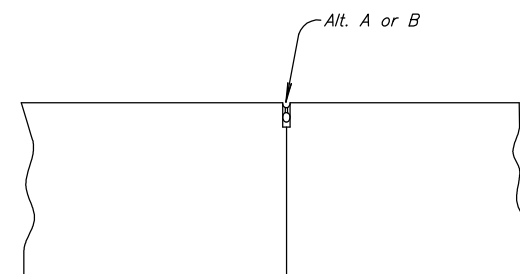
#5 x 2'-0" deformed tie-bar on 30" ctrs. Grout bar into existing pavement.



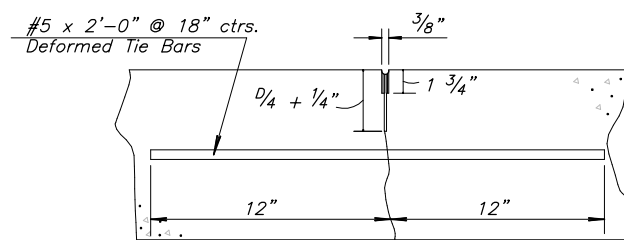
TYPE ③ - Longitudinal Joint (Full Width Patch)



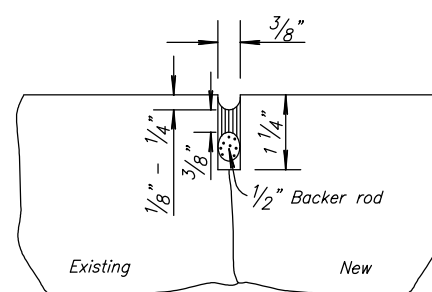
Typical Bar Insertion Detail



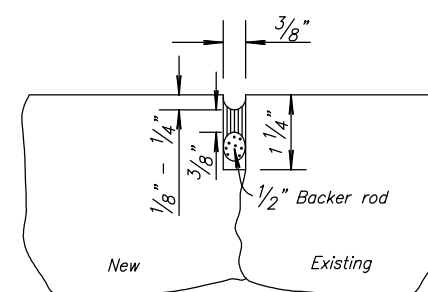
TYPE ④ - Longitudinal Joint (Full Width Patch) (Two Lanes Poured Separately)



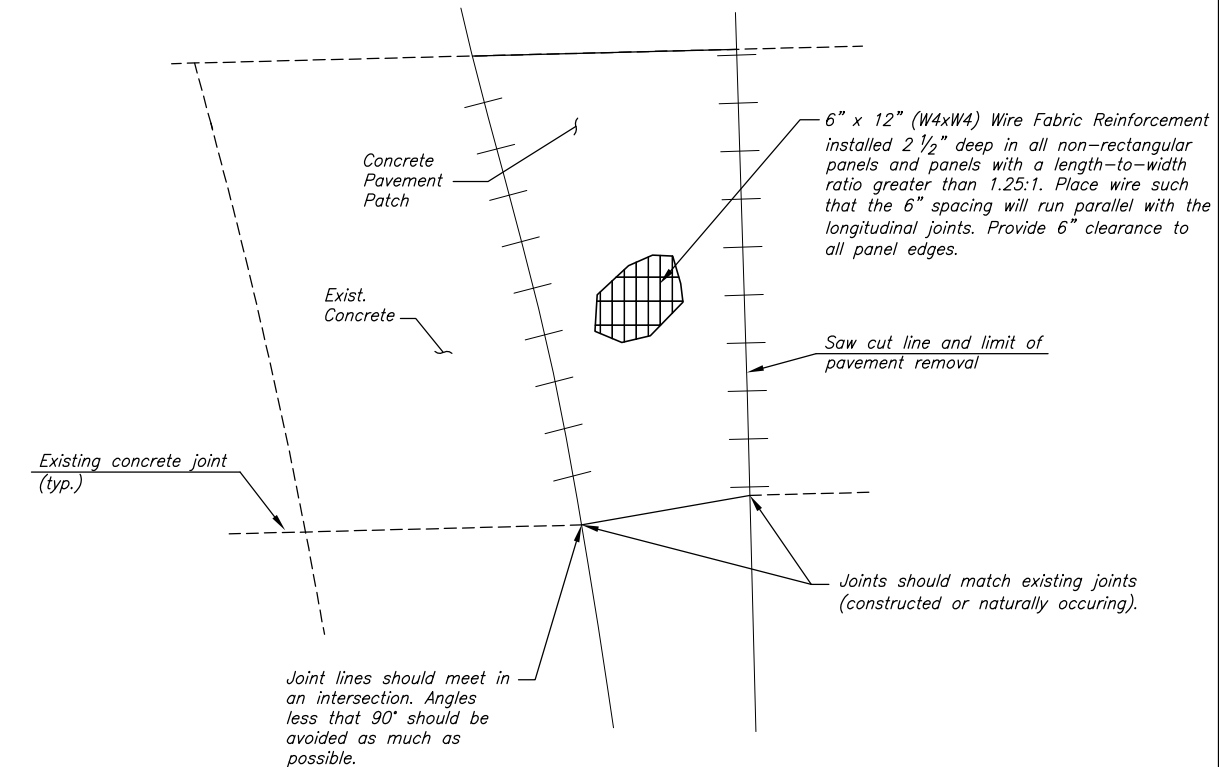
Type ① - Contraction Joint



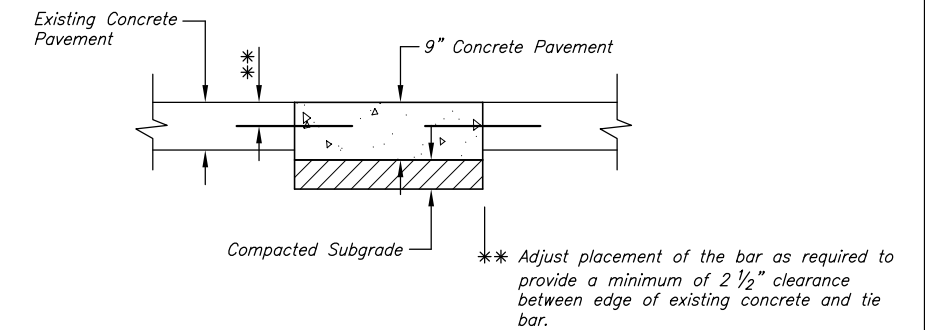
Alt. A - Sawed



Alt. B - Formed



PLAN - Irregular Shapes



SECTION CONCRETE PATCHING

KANSAS DEPARTMENT OF TRANSPORTATION
 MAPLE & RIDGE INTERSECTION
 CONCRETE PAVEMENT REPAIR PATCHING
 PROJECT NO. 87 N-0307-01 SEDGWICK CO.
 M K E C ENGINEERING CONSULTANTS, INC.
 WICHITA, KANSAS

DESIGNED BY: JRA CHECKED BY: LAC
 DRAWN BY: WNJ DATE: JULY 2004 SHEET 26 OF 89