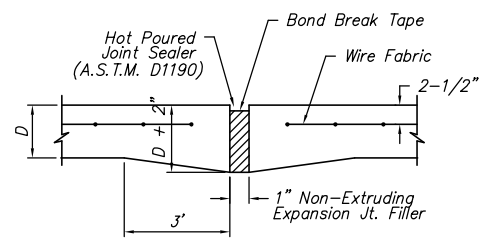
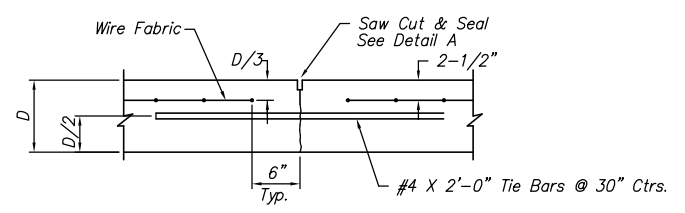


STATE	PROJECT NO.	YEAR	SHEET NO.	TOTAL SHEETS
KANSAS	87 N-0307-01	2006	28	89

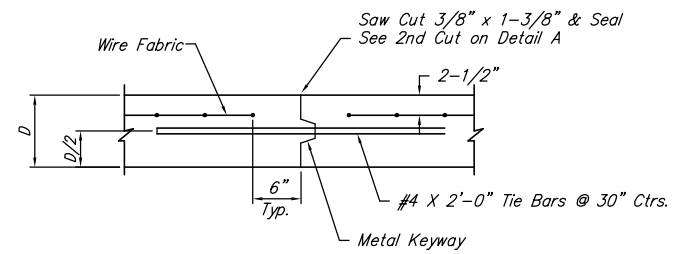


EXPANSION JOINT

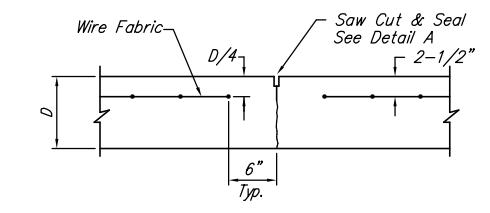
NOTE: Extra Thickness to be Subsidiary to Price of Square Yards Pavement



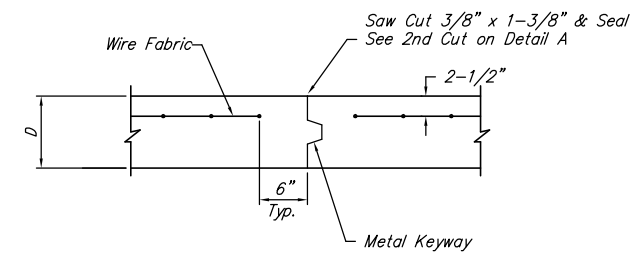
LONGITUDINAL JOINT DETAIL (L.J.)



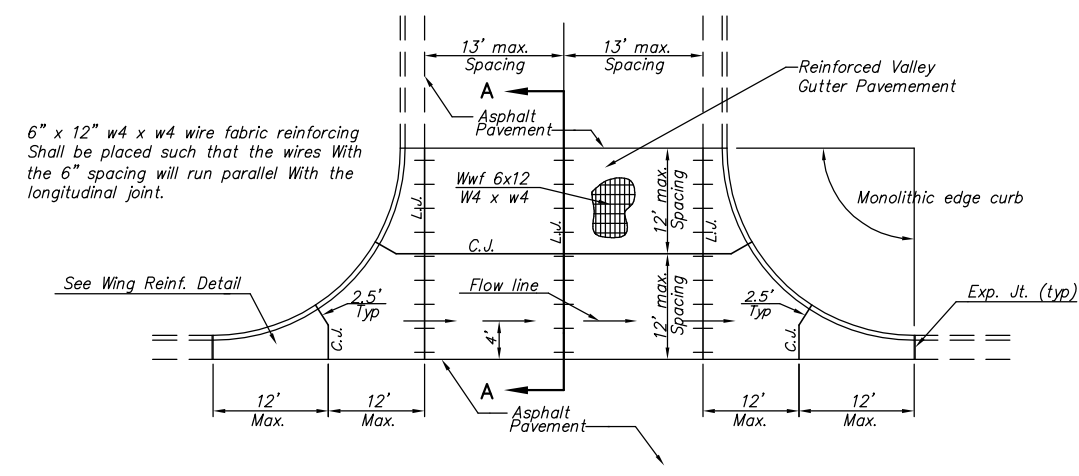
OPTIONAL LONGITUDINAL JOINT DETAIL (L.J.)



CONTRACTION JOINT DETAIL (C.J.)

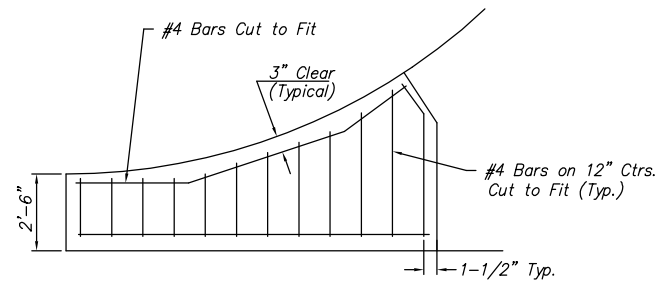


OPTIONAL CONTRACTION JOINT

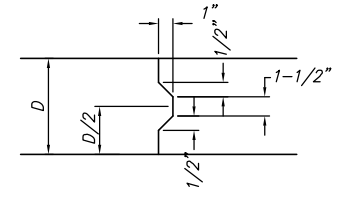


PLAN

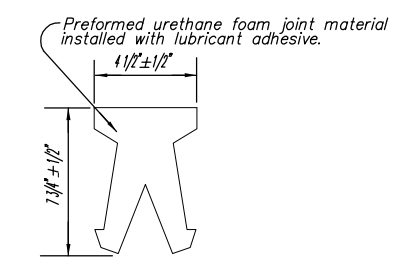
REINFORCED VALLEY GUTTER DETAIL



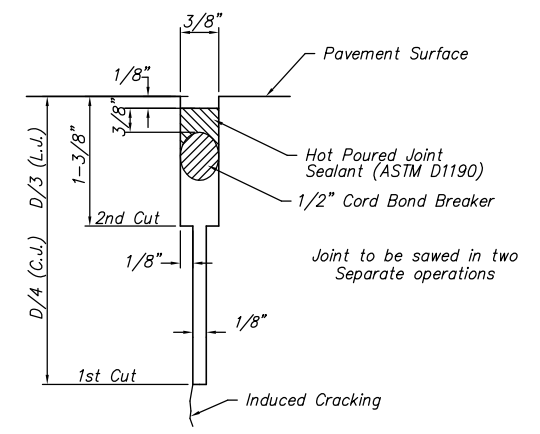
WING REINFORCING DETAIL



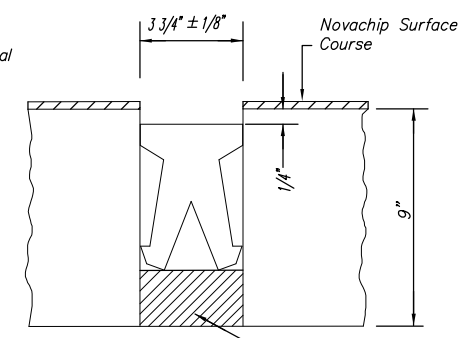
KEYWAY DETAIL



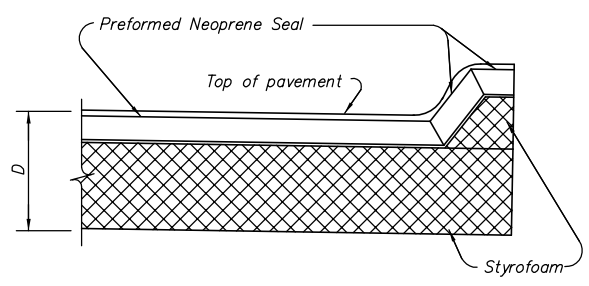
DETAIL OF PRESSURE RELIEF JOINT MATERIAL



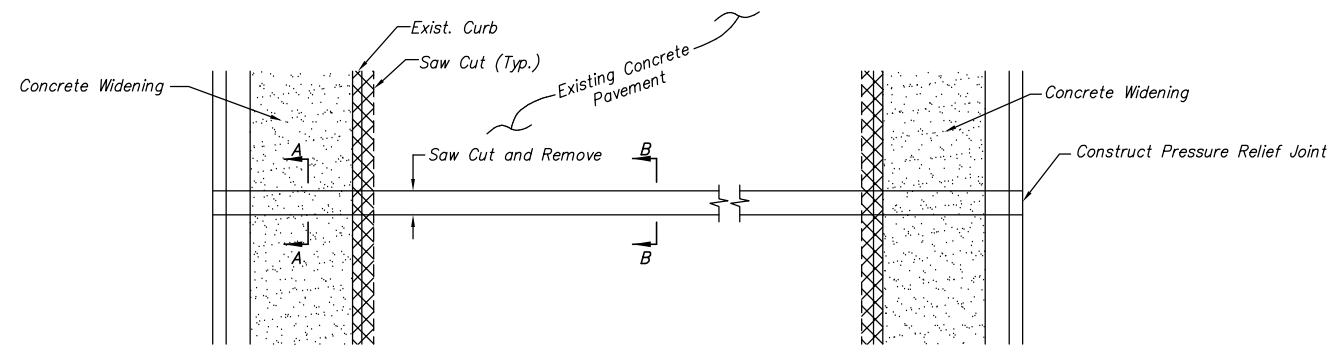
SAW JOINT DETAIL



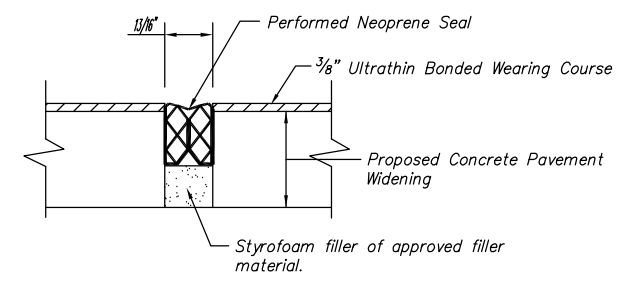
ELEVATION PRESSURE RELIEF JOINT TREATMENT



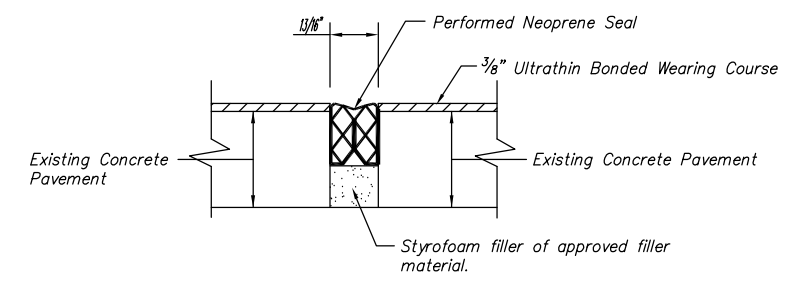
SECTION THROUGH CURB



PLAN



A-A



B-B

PRESSURE RELIEF JOINT INSTALLATION

J:\Civil\03392\dwg\Details\03392ed2.dwg
KANSAS DEPARTMENT OF TRANSPORTATION
MAPLE & RIDGE INTERSECTION
VALLEY GUTTER DETAILS AND
MISC. CONCRETE PAVEMENT DETAILS
PROJECT NO. 87 N-0307-01 SEDGWICK CO.
M K E C ENGINEERING CONSULTANTS, INC.
WICHITA, KANSAS

DESIGNED BY: JRA	CHECKED BY: JRA
DRAWN BY: WNJ	DATE: JULY 2004 SHEET 28 OF 89