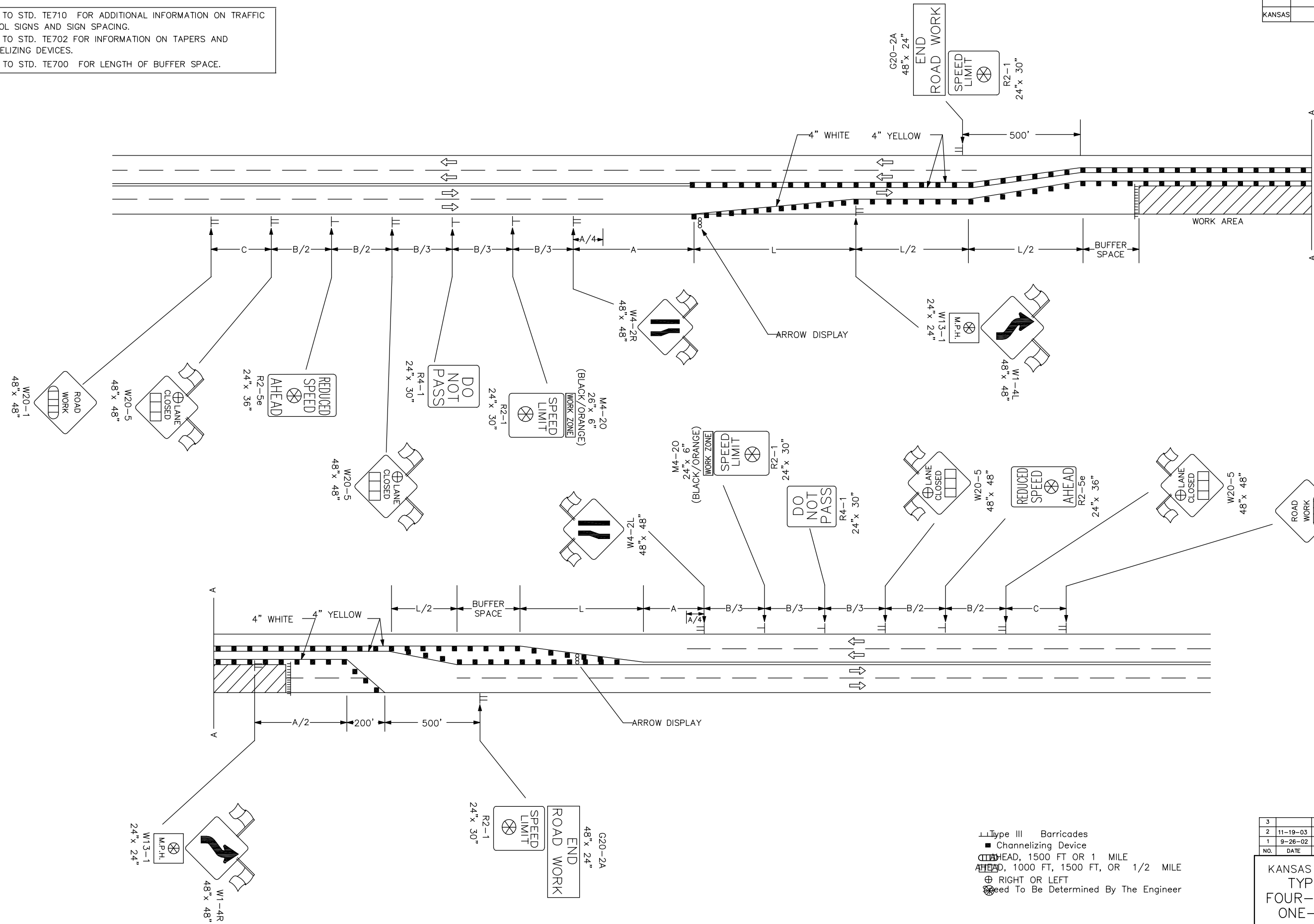


REFER TO STD. TE710 FOR ADDITIONAL INFORMATION ON TRAFFIC CONTROL SIGNS AND SIGN SPACING.
 REFER TO STD. TE702 FOR INFORMATION ON TAPERS AND CHANNELIZING DEVICES.
 REFER TO STD. TE700 FOR LENGTH OF BUFFER SPACE.



- ▬ Type III Barricades
- Channelizing Device
- ⊕ AHEAD, 1500 FT OR 1 MILE
- ⊕ AHEAD, 1000 FT, 1500 FT, OR 1/2 MILE
- ⊕ RIGHT OR LEFT
- ⊗ Speed To Be Determined By The Engineer

| | | | | |
|-----|----------|---------------------|------|--------|
| 3 | | | | |
| 2 | 11-19-03 | CHANGED BORDER | B.H. | S.A.B. |
| 1 | 9-26-02 | REMOVED G20-1 SIGNS | M.H. | S.A.B. |
| NO. | DATE | REVISIONS | BY | APP'D |

KANSAS DEPARTMENT OF TRANSPORTATION
 TYPICAL TRAFFIC CONTROL
 FOUR-LANE UNDIVIDED HIGHWAY
 ONE-HALF ROADWAY CLOSED
 TE748 71 OF 89

| | | | |
|-----------------|-----------------|--------------------------|-----------|
| FHWA APPROVAL | 11-26-03 | APP'D Michael P. McKenna | |
| DESIGNED L.E.R. | DETAILED B.A.H. | QUANTITIES | TRACED |
| DESIGN CK. | DETAIL CK. | QUAN. CK. | TRACE CK. |